

# RNAV (GPS) RWY 5

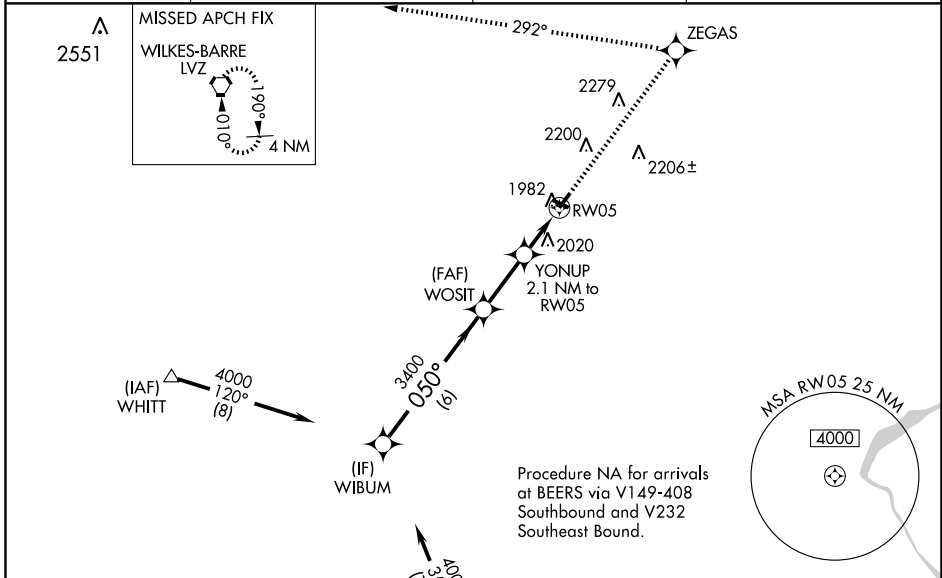
MOUNT POCONO/POCONO MOUNTAINS MUNI (MPO)

WAAS CH <b>50311</b> <b>W05A</b>	APP CRS <b>050°</b>	Rwy Idg TDZE Apt Elev	<b>4000</b> <b>1906</b> <b>1915</b>
--	------------------------	-----------------------------	---

Baro-VNAV NA when using Wilkes-Barre/Scranton altimeter setting. For uncompensated Baro-VNAV systems, LNAV/VNAV NA below -18°C (0°F) or above 45°C (113°F). DME/DME RNP-0.3 NA. Visibility reduction by helicopters NA. When local altimeter setting not received, use Wilkes-Barre/Scranton altimeter setting and increase all DA 179 feet and all MDA 180 feet. Increase LPV all Cats visibility ½ mile, LNAV/VNAV all Cats ¾ mile, LNAV Cat C ¼ mile, Cat D ½ mile, Circling Cat B ¼ mile, Cat C ¾ mile, and Cat D ½ mile.

**MISSED APPROACH:** Climb to 4000 direct ZEGAS and left turn via 292° track to LVZ VORTAC and hold.

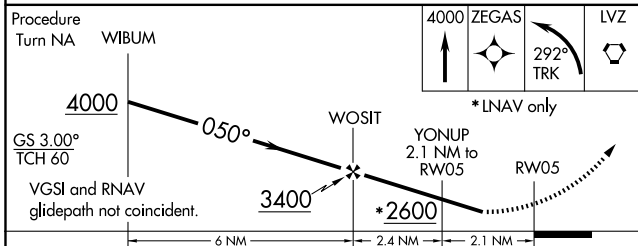
ASOS <b>120.275</b>	WILKES-BARRE APP CON <b>126.3 256.7</b>	CLNC DEL <b>125.3</b>	UNICOM <b>122.7 (CTAF)</b>
------------------------	--	--------------------------	-------------------------------



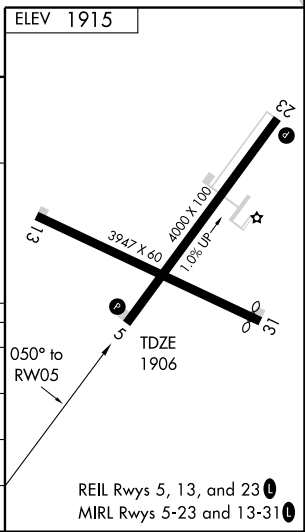
NE-4, 22 OCT 2009 to 19 NOV 2009

NE-4, 22 OCT 2009 to 19 NOV 2009

Procedure Turn NA WIBUM



CATEGORY	A	B	C	D
LPV DA	2160-1		254 (300-1)	
LNAV/VNAV DA	2252-1¼		346 (400-1¼)	
LNAV MDA	2320-1	414 (500-1)	2320-1¼	414 (500-1¼)
CIRCLING	2480-1	2500-1	2500-1½	2540-2
	565 (600-1)	585 (600-1)	585 (600-1½)	625 (700-2)



# RNAV (GPS) RWY 5