

# RNAV (GPS) RWY 31

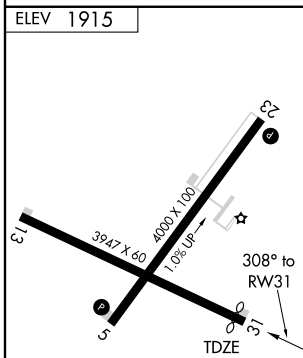
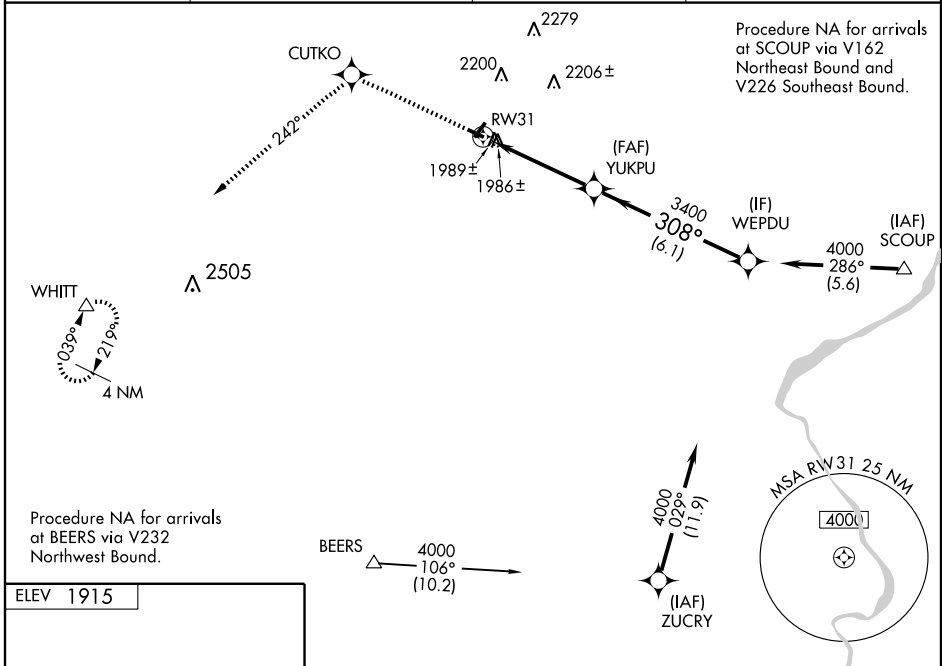
MOUNT POCONO/ POCONO MOUNTAINS MUNI (MPO)

APP CRS	Rwy Idg	<b>3767</b>
<b>308°</b>	TDZE	<b>1885</b>
	Apt Elev	<b>1915</b>

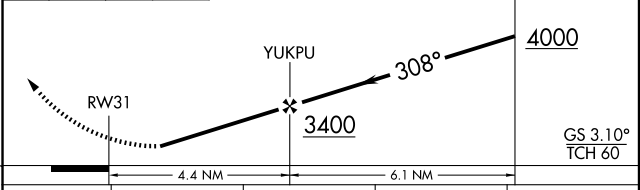
DME/DME RNP-0.3 NA. Visibility reduction by helicopters NA. When local altimeter setting not received, use Wilkes-Barre/Scranton altimeter setting and increase all DA 179 feet and all MDA 180 feet. Increase LNAV/VNAV all Cats ¾ mile, LNAV Cats C and D ½ mile, Circling Cat B ¼ mile, Cat C ¾ mile, and Cat D ½ mile. For uncompensated Baro-VNAV systems, LNAV/VNAV NA below -18°C (0°F) or above 35°C (95°F). Baro-VNAV NA when using Wilkes-Barre/Scranton altimeter setting.

**MISSED APPROACH:**  
Climb to 4200 direct CUTKO and via 242° track to WHITT and hold.

ASOS <b>120.275</b>	WILKES-BARRE APP CON <b>126.3 256.7</b>	CLNC DEL <b>125.3</b>	UNICOM <b>122.7 (CTAF)</b>
------------------------	--------------------------------------------	--------------------------	-------------------------------



4200	CUTKO	242° TRK	WHITT
------	-------	----------	-------



CATEGORY	A	B	C	D
LNAV/VNAV DA	2286-1¼ 401 (400-1¼)			
LNAV MDA	2240-1 355 (400-1)		2240-1¼ 355 (400-1¼)	
CIRCLING	2480-1 565 (600-1)	2500-1 585 (600-1)	2500-1½ 585 (600-1½)	2540-2 625 (700-2)

REIL Rws 5, 13, and 23   
MIRL Rws 5-23 and 13-31

NE-4, 22 OCT 2009 to 19 NOV 2009

NE-4, 22 OCT 2009 to 19 NOV 2009