

# VOR/DME RWY 35

BORGER/ HUTCHINSON COUNTY (BGD)

VORTAC BGD <b>108.6</b> Chan 23	APP CRS <b>355°</b>	Rwy Idg TDZE Apt Elev <b>6300</b> <b>3055</b> <b>3055</b>
---------------------------------------	------------------------	--

▼ Visibility reduction by helicopters NA. When local altimeter setting not received, use Perry Lefors Field altimeter setting; increase all MDA 80 feet and increase all Cat C and D visibilities 1/4 mile.

MISSED APPROACH: Climb to 5000 direct BGD VORTAC and hold.

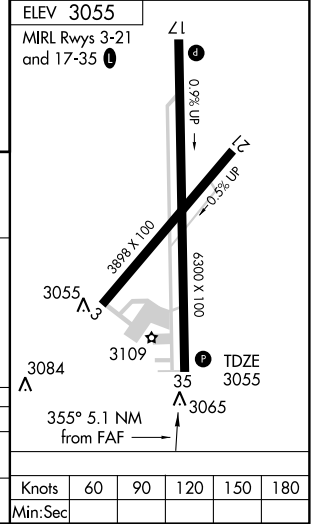
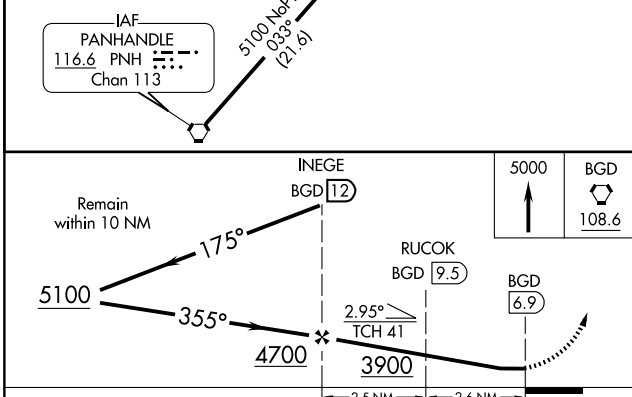
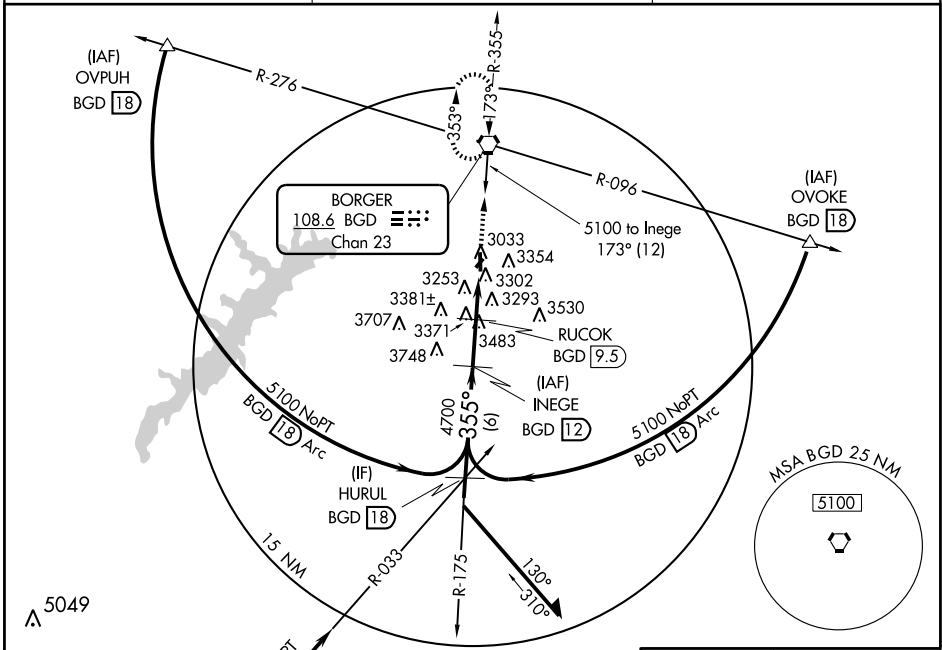
ASOS  
**118.325**

AMARILLO APP CON \*  
**119.5 307.0**

UNICOM  
**123.0** (CTAF) **0**

SC-2, 22 OCT 2009 to 19 NOV 2009

SC-2, 22 OCT 2009 to 19 NOV 2009



CATEGORY	A	B	C	D
S-35	3680-1	625 (700-1)	3680-1 3/4 625 (700-1 3/4)	3680-2 625 (700-2)
CIRCLING	3680-1	625 (700-1)	3680-1 3/4 625 (700-1 3/4)	3680-2 625 (700-2)

Knots	60	90	120	150	180
Min:Sec					

# VOR/DME RWY 35