

BORGER, TEXAS

AL-5152 (FAA)

VOR RWY 17

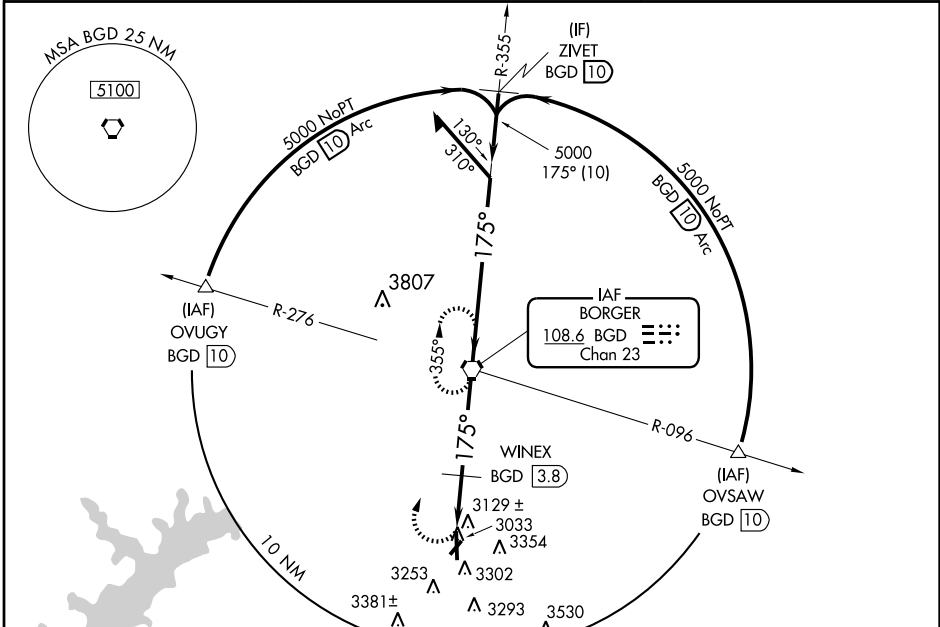
BORGER/HUTCHINSON COUNTY (BGD)

VORTAC BGD 108.6 Chan 23	APP CRS 175°	Rwy Idg TDZE Apt Elev	6300 3013 3055
----------------------------------------------	------------------------	-----------------------------	-------------------------------------------

▼ Visibility reduction by helicopters NA. When local altimeter setting not received, use Pampa altimeter setting; increase all MDA 80 feet and S-17 Cat C, D visibility and circling Cat C, D visibility ¼ mile, increase WINEX fix minimums S-17 Cat D visibility ¼ mile and circling Cat C, D visibility ¼ mile.

MISSED APPROACH: Climbing right turn to 5000 direct BGD VORTAC and hold.

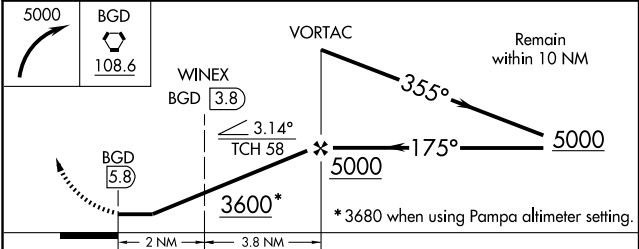
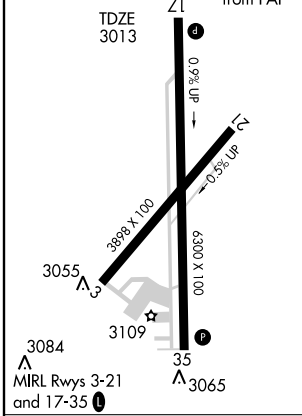
ASOS 118.325	AMARILLO APP CON * 119.5 307.0	UNICOM 123.0 (CTAF) 0
------------------------	------------------------------------------	---------------------------------



SC-2, 22 OCT 2009 to 19 NOV 2009

SC-2, 22 OCT 2009 to 19 NOV 2009

ELEV 3055	175° 5.8 NM from FAF
-----------	----------------------



CATEGORY	A	B	C	D
S-17	3600-1	587 (600-1)	3600-1½ 587 (600-1½)	3600-1¾ 587 (600-1¾)
CIRCLING	3620-1 565 (600-1)	3660-1 605 (700-1)	3660-1¾ 605 (700-1¾)	3660-2 605 (700-2)
WINEX FIX MINIMUMS				
S-17	3520-1	507 (500-1)	3520-1½	507 (500-1½)
CIRCLING	3620-1 565 (600-1)	3660-1 605 (700-1)	3660-1¾ 605 (700-1¾)	3660-2 605 (700-2)

BORGER, TEXAS

Amtd 9 08157

BORGER/HUTCHINSON COUNTY (BGD)

35°42' N-101° 24' W

VOR RWY 17