

STILLWATER, OKLAHOMA

AL-5151 (FAA)

VOR/DME SWO 108.4 Chan 21	APP CRS 356°	Rwy Idg 7401 TDZE 964 Apt Elev 1000
---	------------------------	--

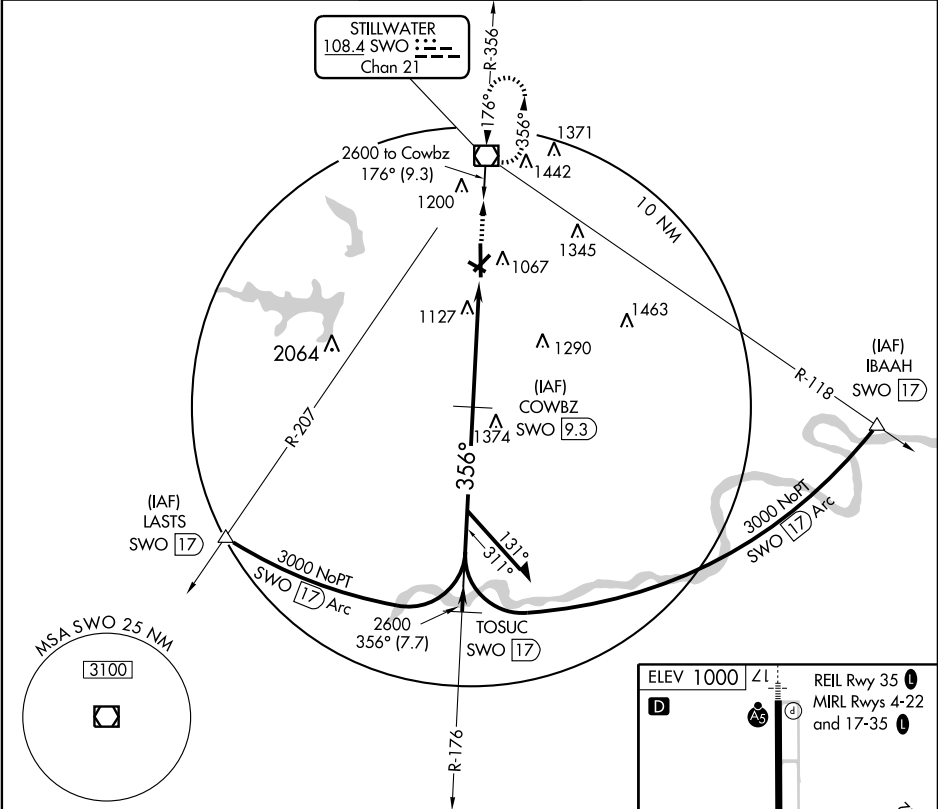
VOR/DME RWY 35

STILLWATER RGNL (SWO)

⚠ If local altimeter setting not received, use Ponca City Rgnl altimeter setting and increase all MDA'S 80 feet. VDP NA with Ponca City altimeter setting.

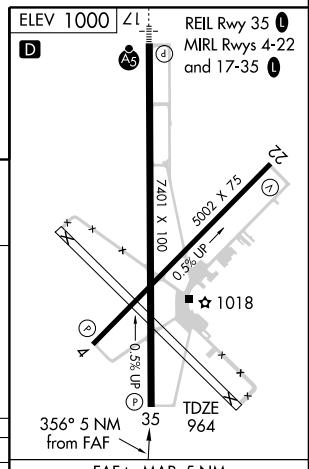
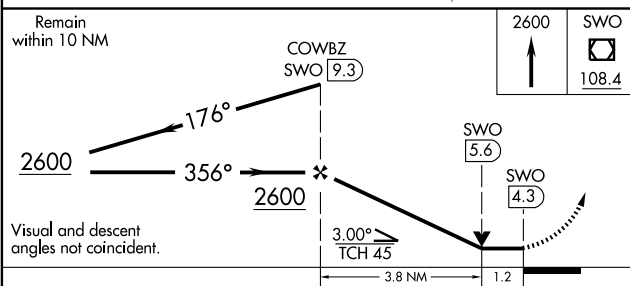
MISSED APPROACH: Climb to 2600 direct SWO VOR/DME and hold.

ASOS 135.725	KANSAS CITY CENTER 128.3 291.7	STILLWATER TOWER ★ 125.35 (CTAF) 0	GND CON 121.6	UNICOM 122.95
------------------------	--	--	-------------------------	-------------------------



SC-1, 22 OCT 2009 to 19 NOV 2009

SC-1, 22 OCT 2009 to 19 NOV 2009



CATEGORY	A		B		C		D	
S-35	1380-1		416 (400-1)		1380-1¼		416 (400-1¼)	
CIRCLING	1400-1 400 (500-1)		1460-1 460 (500-1)		1460-1½ 460 (500-1½)		1560-2 560 (600-2)	

FAF to MAP 5 NM					
Knots	60	90	120	150	180
Min:Sec	5:00	3:20	2:30	2:00	1:40

STILLWATER, OKLAHOMA
Amdt 1 09183

36°10'N-97°05'W

STILLWATER RGNL (SWO) VOR/DME RWY 35