

STILLWATER, OKLAHOMA

AL-5151 (FAA)

LOC I-SWO <b>109.15</b> Chan 28(Y)	APP CRS <b>174°</b>	Rwy Idg TDZE Apt Elev	<b>7401</b> <b>1000</b> <b>1000</b>
--	------------------------	-----------------------------	---

**ILS or LOC RWY 17**  
STILLWATER RGNL (SWO)

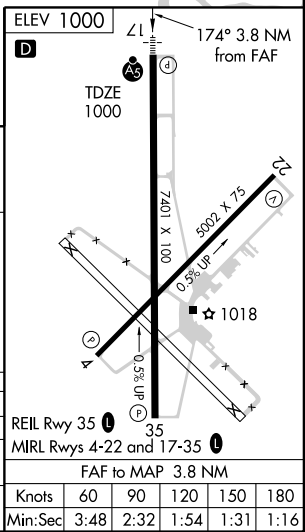
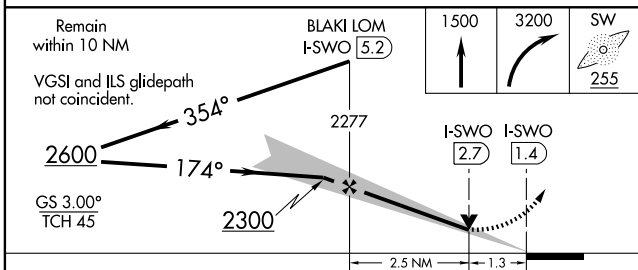
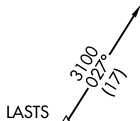
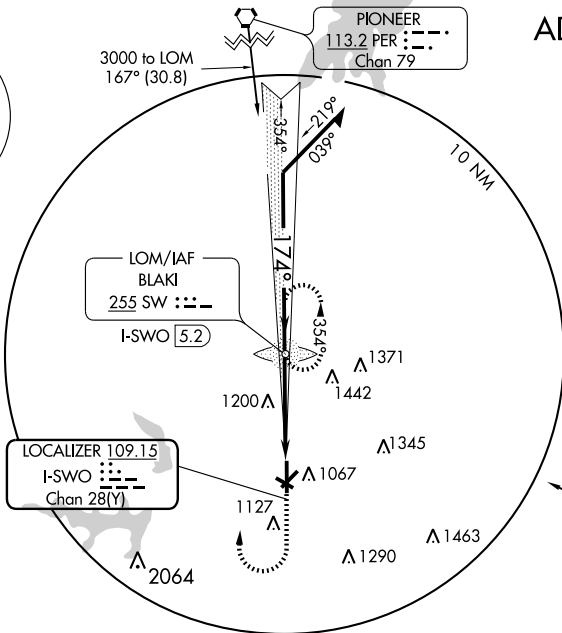
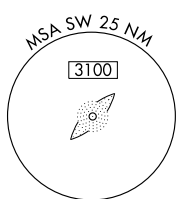
**⚠** If local altimeter setting not received, use Ponca City Rgnl altimeter setting and increase all DA/MDAs 80 feet. VDP NA with Ponca City Rgnl altimeter setting.



MISSED APPROACH: Climb to 1500 then climbing right turn to 3200 direct BLAKI LOM and hold.

ASOS <b>135.725</b>	KANSAS CITY CENTER <b>128.3 291.7</b>	STILLWATER TOWER ★ <b>125.35</b> (CTAF) <b>1</b>	GND CON <b>121.6</b>	UNICOM <b>122.95</b>
------------------------	--	---	-------------------------	-------------------------

**ADF REQUIRED**



CATEGORY	A	B	C	D
S-ILS 17		1 200-½ 200 (200-½)		
S-LOC 17	1 460-½ 460 (500-½)		1 460-¾ 460 (500-¾)	1 460-1 460 (500-1)
CIRCLING	1 460-1 460 (500-1)		1 460-1½ 460 (500-1½)	1 560-2 560 (600-2)

STILLWATER, OKLAHOMA  
Amdt 2 09183

36°10'N-97°05'W

**STILLWATER RGNL (SWO)**  
**ILS or LOC RWY 17**

Knots	60	90	120	150	180
Min:Sec	3:48	2:32	1:54	1:31	1:16

SC-1, 22 OCT 2009 to 19 NOV 2009

SC-1, 22 OCT 2009 to 19 NOV 2009