

GUYMON, OKLAHOMA

AL-5150 (FAA)

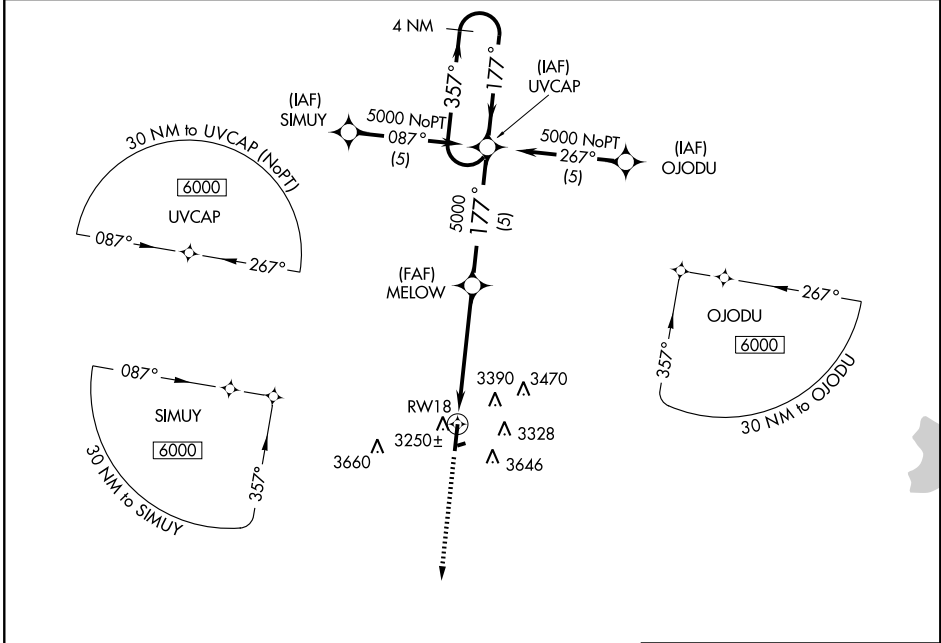
RNAV (GPS) RWY 18

GUYMON MUNI (GUY)

| | |
|------------------------|-------------------------|
| APP CRS 177° | Rwy Idg 5900 |
| | TDZE 3123 |
| | Apt Elev 3123 |

⚠ Circling not authorized east of Rwy 18-36.
⚠ NA MISSED APPROACH: Climb to 5000 direct BEAKY WP and hold.
 GPS or RNP-0.3 required.
 DME/DME RNP-0.3 not authorized.

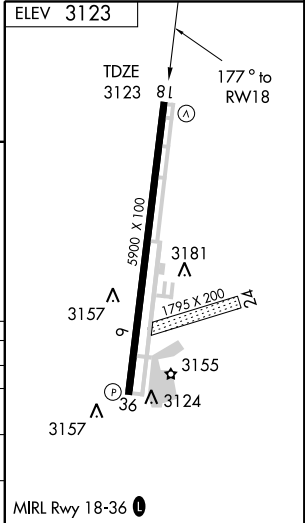
| | | |
|------------------------|--|---------------------------------|
| ASOS 119.925 | KANSAS CITY CENTER 134.0 290.8 | UNICOM 122.7 (CTAF) 0 |
|------------------------|--|---------------------------------|



SC-1, 22 OCT 2009 to 19 NOV 2009

SC-1, 22 OCT 2009 to 19 NOV 2009

| | | | | |
|--------------|--------|--------------|-------------------------|---|
| 5000 | BEAKY | MELOW | UVCAP | 4 NM Holding Pattern |
| ↑ | ⬠ | | | |
| RWY 18 | | | | |
| | | 5000 | 5000 | 5000 |
| | | 3.49° TCH 45 | 177° | 357° |
| | | 5 NM | 5 NM | 5000 |
| | | | | VGSI and descent angles not coincident. |
| CATEGORY | A | B | C | D |
| GLS PA DA | | | NA | |
| LNAV/VNAV DA | | | NA | |
| LNAV MDA | 3700-1 | 577 (600-1) | 3700-1½ 577 (600-1½) | NA |
| CIRCLING | 3700-1 | 577 (600-1) | 3700-1½ 577 (600-1½) | NA |



GUYMON, OKLAHOMA
 Orig 08213

36°41'N-101°30'W

RNAV (GPS) RWY 18

MIRL Rwy 18-36 0