

ADA, OKLAHOMA

AL-5149 (FAA)

# VOR/DME-A ADA MUNI (ADH)

VOR/DME ADH <b>117.8</b> Chan <b>125</b>	APP CRS <b>351°</b>	Rwy Idg TDZE Apt Elev <b>N/A</b> <b>N/A</b> <b>1016</b>
--	------------------------	--

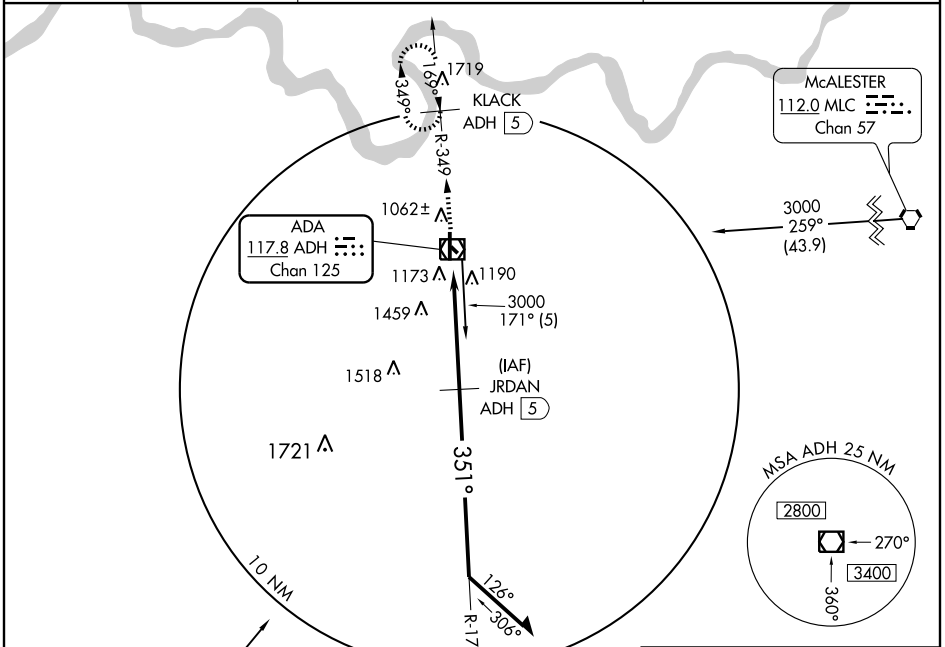
**NA** Circling to Rwy 31 not authorized at night.

MISSED APPROACH: Climb to 3000 via ADH R-349 to KLACK/5 DME and hold.

AWOS-3  
**118.725**

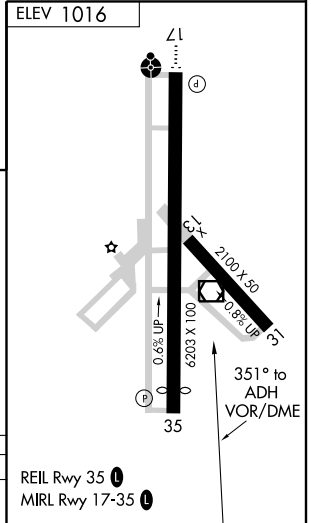
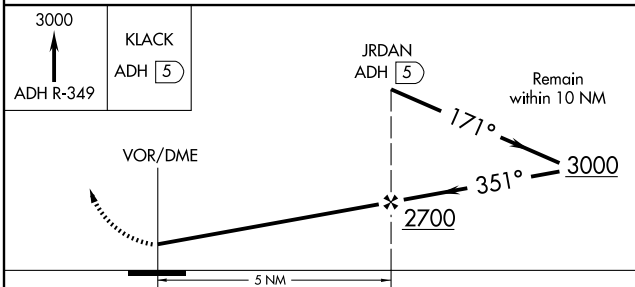
FORT WORTH CENTER  
**128.1 327.15**

UNICOM  
**122.8 (CTAF)** **0**



SC-1, 22 OCT 2009 to 19 NOV 2009

SC-1, 22 OCT 2009 to 19 NOV 2009



CATEGORY	A	B	C	D
CIRCLING	1560-1	544 (600-1)	1560-1½ 544 (600-1½)	NA

ADA, OKLAHOMA  
Orig-E 09239

34°48'N-96°40'W

# ADA MUNI (ADH) VOR/DME-A