

RNAV (GPS) RWY 17

ADA MUNI (ADH)

WAAS CH 61012 W17A	APP CRS 174°	Rwy ldg 6203 TDZE 1016 Apt Elev 1016
--	------------------------	---

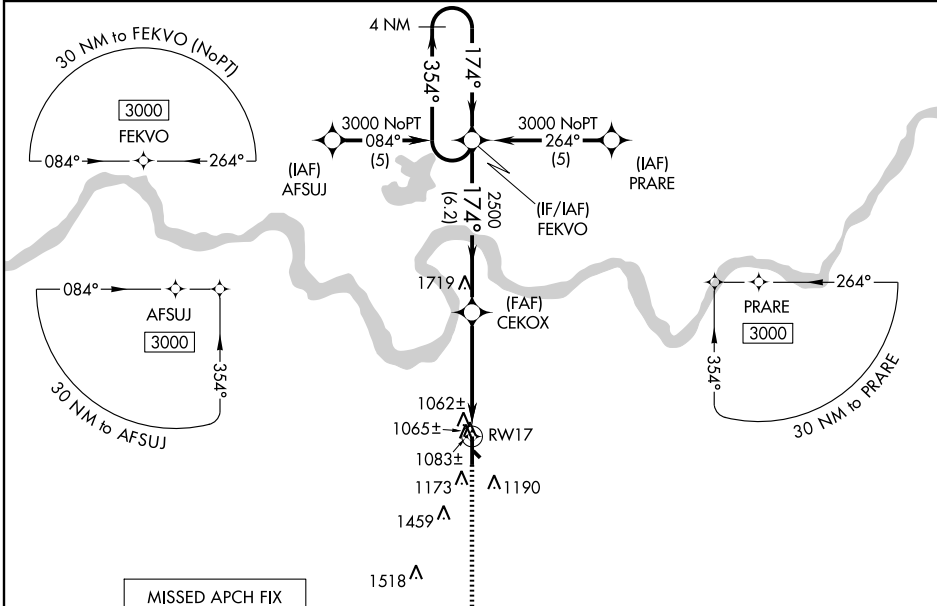
⚠ Inoperative table does not apply. For uncompensated Baro-VNAV systems, LNAV/VNAV NA below -17°C (2°F) or above 54°C (130°F). DME/DME RNP-0.3 NA. Visibility reduction by helicopters NA. Circling to Rwy 31 NA at night. Baro-VNAV NA when using Seminole altimeter setting. When local altimeter setting not received, use Seminole altimeter setting and increase all DA 66 feet and all MDA 80 feet, increase LPV all Cats, LNAV/VNAV all Cats, and LNAV Cat C visibility 1/4 mile.

ODALS



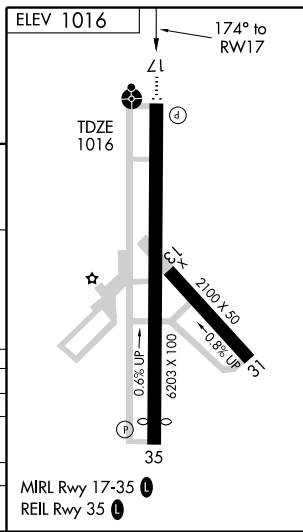
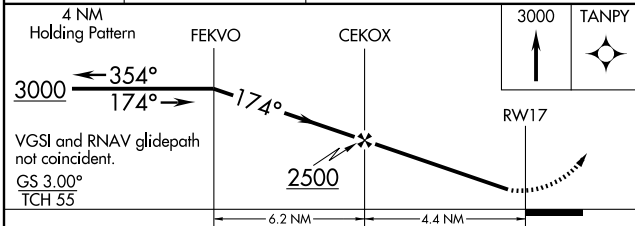
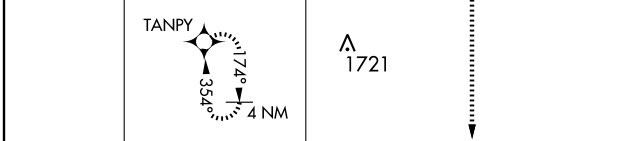
MISSED APPROACH:
Climb to 3000 direct TAMPY and hold.

AWOS-3 118.725	FORT WORTH CENTER 128.1 327.15	UNICOM 122.8 (CTAF) 0
--------------------------	--	---------------------------------



SC-1, 22 OCT 2009 to 19 NOV 2009

SC-1, 22 OCT 2009 to 19 NOV 2009



CATEGORY	A	B	C	D
LPV DA	1304-1	288 (300-1)		NA
LNAV/VNAV DA	1335-1	319 (400-1)		NA
LNAV MDA	1380-1	364 (400-1)		NA
CIRCLING	1520-1	504 (600-1)	1520-1½ 504 (600-1½)	NA

MIRL Rwy 17-35 0
REIL Rwy 35 0