

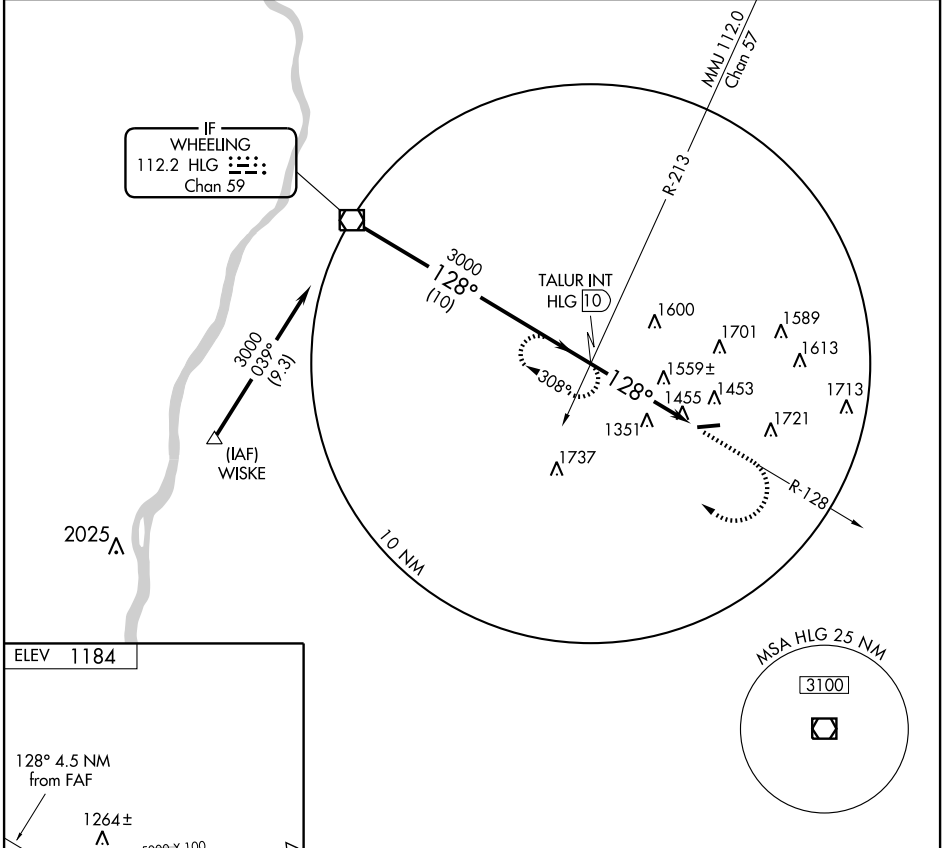
VOR-B
WASHINGTON COUNTY (AFJ)

VOR/DME HLG 112.2 Chan 59	APP CRS 128°	Rwy Idg TDZE Apt Elev N/A N/A 1184
---	------------------------	--

⚠ If local altimeter not received, use Wheeling altimeter setting and increase all MDAs 40 feet.
⚠ When VGSJ inop, circling Rwy 9 NA at night.

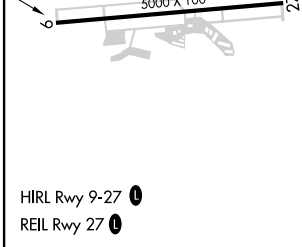
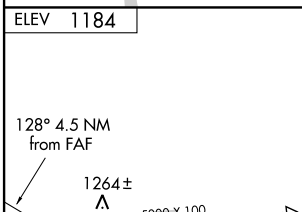
MISSED APPROACH: Climb to 3000, then right turn via heading 343° and HLG R-128 to TALUR Int/10 DME and hold.

AWOS-3 119.175	PITTSBURGH APP CON 119.35 285.575	CLNC DEL 127.3	UNICOM 122.8 (CTAF) 0
--------------------------	---	--------------------------	---------------------------------



NE-4, 22 OCT 2009 to 19 NOV 2009

NE-4, 22 OCT 2009 to 19 NOV 2009



FAF to MAP 4.5 NM					
Knots	60	90	120	150	180
Min:Sec	4:30	3:00	2:15	1:48	1:30

CATEGORY	A	B	C	D
CIRCLING	1860-1	676 (700-1)	1860-2 676 (700-2)	2040-2¾ 856 (900-2¾)