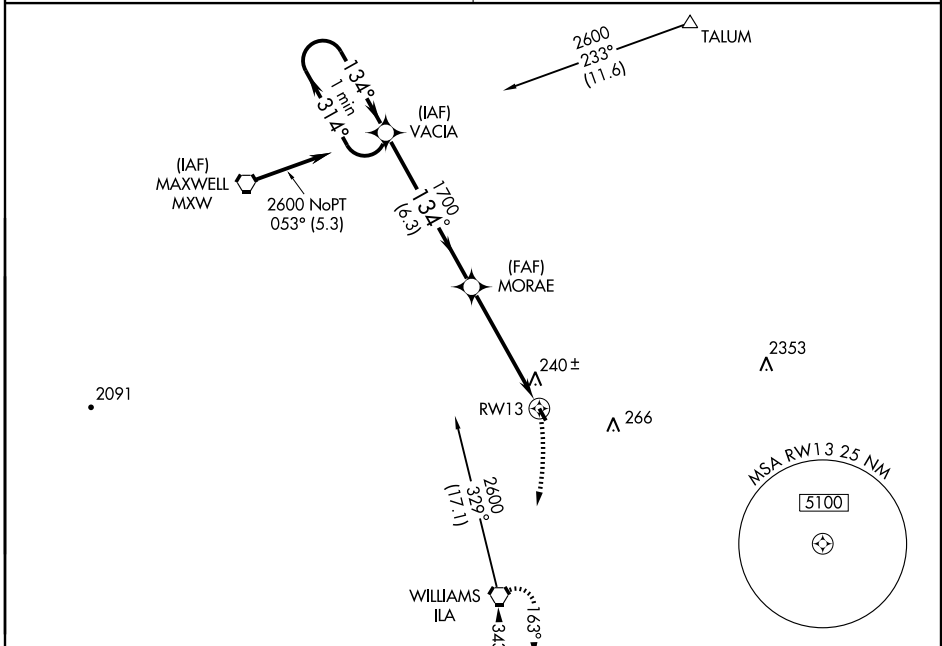


GPS RWY 13
COLUSA COUNTY (008)

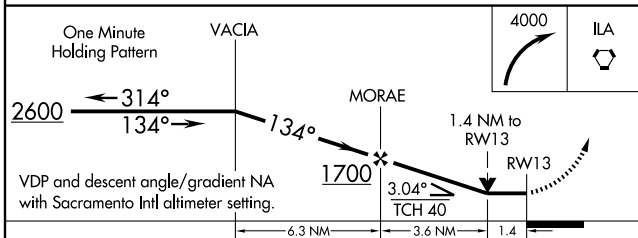
APP CRS	Rwy Idg	3035
134°	TDZE	50
	Apt Elev	50

<p>NA Obtain local altimeter setting on CTAF; when not received, use Sacramento Intl altimeter setting.</p>	<p>MISSED APPROACH: Climbing right turn to 4000 direct ILA VORTAC and hold.</p>
--------------------------------------------------------------------------------------------------------------------	----------------------------------------------------------------------------------------

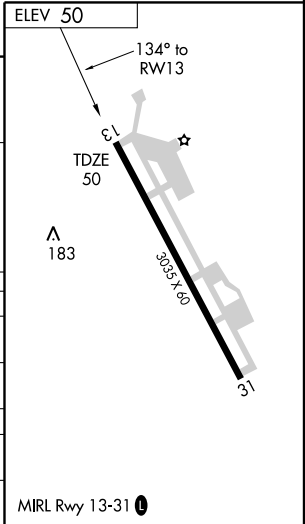
<p>OAKLAND CENTER 132.2 350.3</p>	<p>UNICOM 122.8 (CTAF)</p>
----------------------------------------------	---------------------------------------



2091
2790



CATEGORY	A	B	C	D
S-13	540-1	490 (500-1)	540-1¼ 490 (500-1¼)	NA
CIRCLING	600-1	550 (600-1)	600-1½ 550 (600-1½)	NA
SACRAMENTO ALTIMETER SETTING MINIMUMS				
S-13	640-1	590 (600-1)	640-1½ 590 (600-1½)	NA
CIRCLING	680-1	630 (700-1)	680-1¾ 630 (700-1¾)	NA



SW-2, 22 OCT 2009 to 19 NOV 2009

SW-2, 22 OCT 2009 to 19 NOV 2009