

VORTAC DBN 113.1 Chan 78	APP CRS 275°	Rwy Idg TDZE Apt Elev	N/A N/A 309
--	------------------------	-----------------------------	--

⚠ When local altimeter setting not received, use Vidalia altimeter setting and increase all MDAs 100 feet and Cat. C and D visibility 1/4 mile.
 ⚠ WODOG fix minima increase Cat. D visibility 1/2 mile.

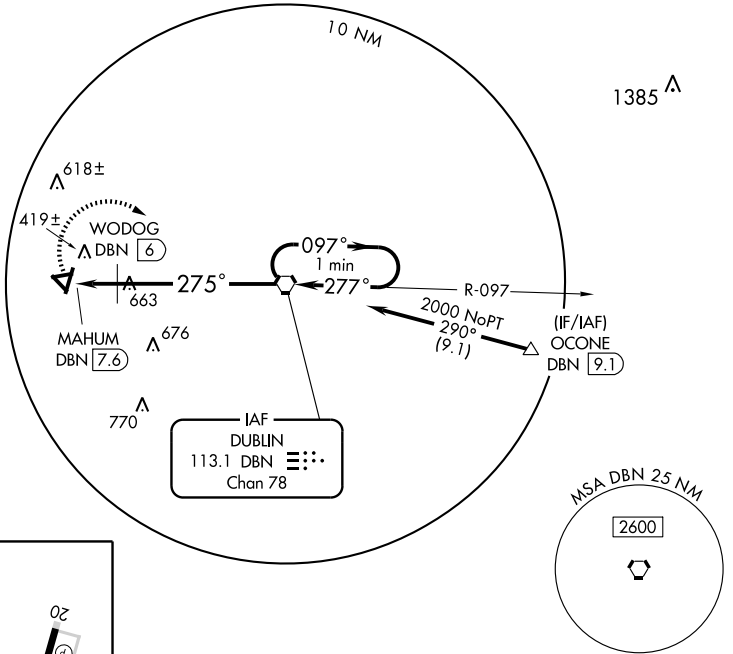
MISSED APPROACH: Climbing right turn to 2000 direct DBN VORTAC and hold.

AWOS-3
118.425

ATLANTA APP CON ★
124.2 279.6

UNICOM
122.7 (CTAF)

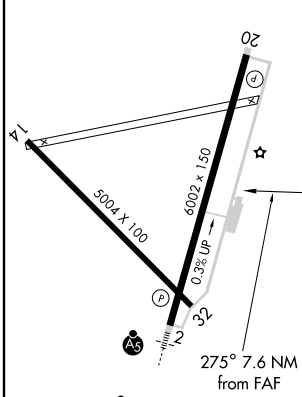
Procedure NA for arrivals at OCONE via V70 northeast bound.



SE-4, 22 OCT 2009 to 19 NOV 2009

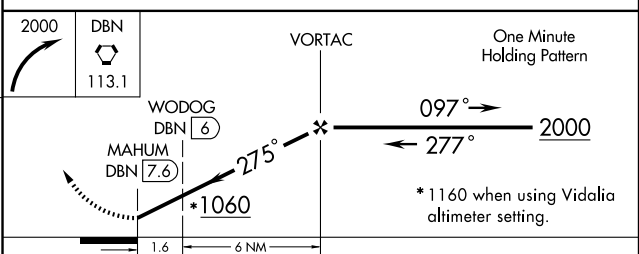
SE-4, 22 OCT 2009 to 19 NOV 2009

ELEV 309



FAF to MAP 7.6 NM

Knots	60	90	120	150	180
Min:Sec	7:36	5:04	3:48	3:02	2:32



CATEGORY	A	B	C	D
CIRCLING	1060-1 751 (800-1)	1060-1¼ 751 (800-1¼)	1060-2¼ 751 (800-2¼)	1060-2½ 751 (800-2½)
WODOG FIX MINIMA				
CIRCLING	760-1	451 (500-1)	780-1½ 471 (800-1½)	1020-2¼ 711 (800-2¼)