

RNAV (GPS) RWY 20

DUBLIN/ W.H. "BUD" BARRON (DBN)

APP CRS 200°	Rwy Idg 6002
	TDZE 309
	Apt Elev 309

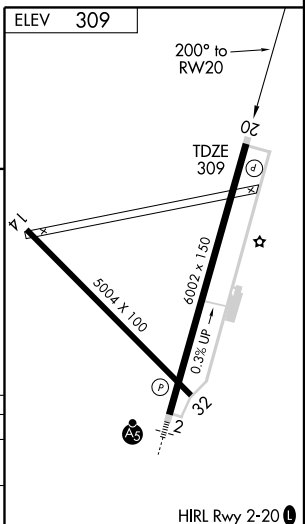
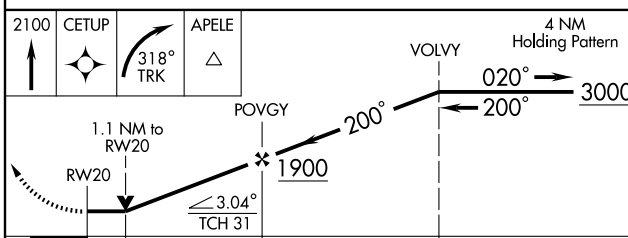
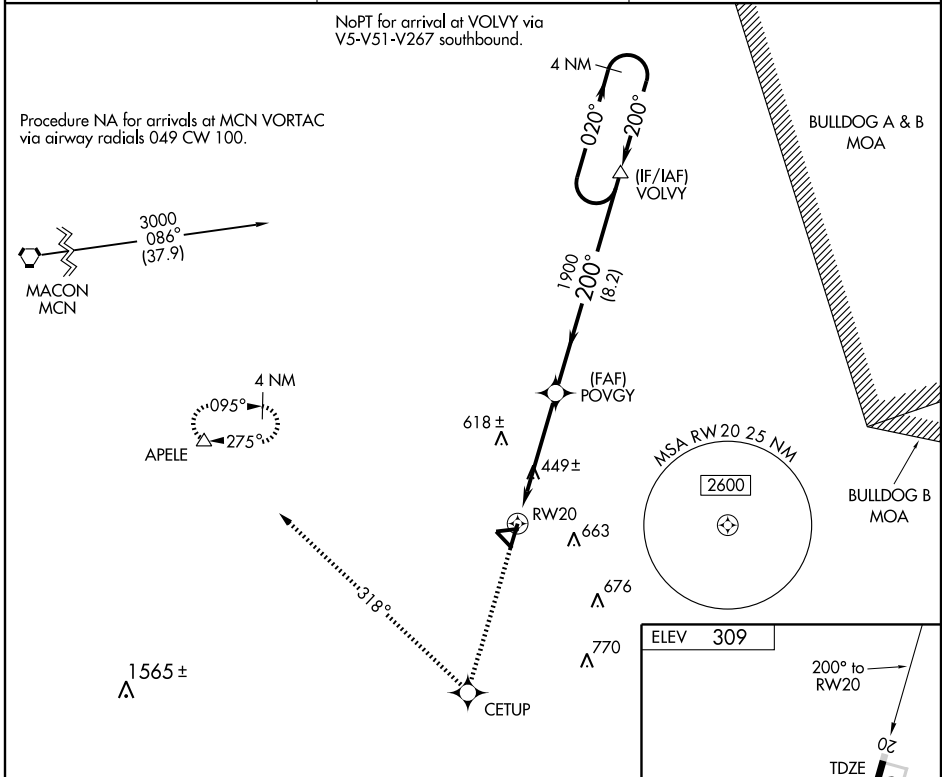
When local altimeter setting not received, use Vidalia altimeter setting and increase all MDAs 100 feet, LNAV Cat. C and D visibility ½ mile, and circling Cat. D visibility ½ mile. Visibility reduction by helicopters NA. VDP NA with Vidalia altimeter setting. DME/DME RNP-0.3 NA.

MISSED APPROACH: Climb to 2100 direct CETUP and right turn via 318° track to APELE and hold.

AWOS-3
118.425

ATLANTA APP CON ★
124.2 279.6

UNICOM
122.7 (CTAF) 0



CATEGORY	A	B	C	D
LNAV MDA	700-1 391 (400-1)		700-1¼ 391 (400-1¼)	
CIRCLING	760-1 451 (500-1)	780-1½ 471 (500-1½)		1020-2¼ 711 (800-2¼)

SE-4, 22 OCT 2009 to 19 NOV 2009

SE-4, 22 OCT 2009 to 19 NOV 2009