

APP CRS	Rwy Idg	<b>6002</b>
<b>020°</b>	TDZE	<b>298</b>
	Apt Elev	<b>309</b>

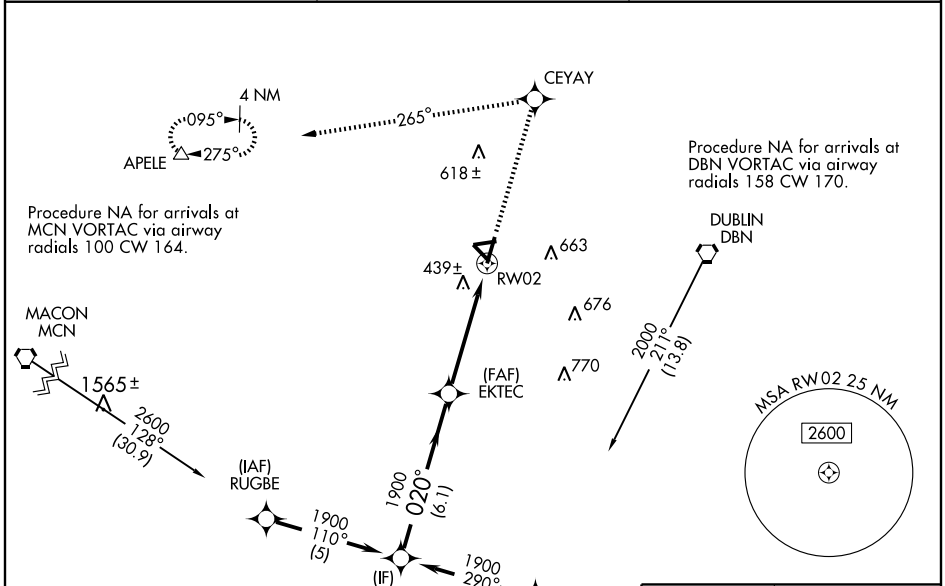
# RNAV (GPS) RWY 2

DUBLIN/ W.H. "BUD" BARRON (DBN)

When local altimeter setting not received, use Vidalia altimeter setting and increase all MDAs 100 feet and circling Cat. D visibility ½ mile. Inoperative table does not apply to LNAV Cats A and B. For inoperative MALSR, increase LNAV visibility Cats C and D ¼ mile. When using Vidalia altimeter setting: inoperative table does not apply to LNAV Cats A and B. For inoperative MALSR, increase LNAV visibility Cats C and D ½ mile. VDP NA when using Vidalia altimeter setting.

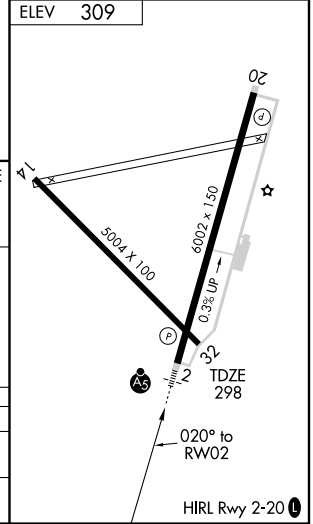
**MALSR**  
  
**MISSED APPROACH:** Climb to 2100 direct CEYAY and left turn via 265° track to APELE and hold.

<b>AWOS-3</b> <b>118.425</b>	<b>ATLANTA APP CON *</b> <b>124.2 279.6</b>	<b>UNICOM</b> <b>122.7 (CTAF) 0</b>
---------------------------------	--	--



SE-4, 22 OCT 2009 to 19 NOV 2009

SE-4, 22 OCT 2009 to 19 NOV 2009



	RATOC	EKTEC	2100	CEYAY	APELE
	1900	1900	↑	265° TRK	△
Procedure Turn NA	6.1 NM		3.7 NM		1.2 NM
CATEGORY	A	B	C	D	
LNAV MDA	700-1		402 (400-1)		
CIRCLING	760-1	451 (500-1)	780-1½ 471 (500-1½)	1020-2¼ 711 (800-2¼)	