


LOC/DME I-DBN 109.1 Chan 28	APP CRS 020°	Rwy Idg TDZE Apt Elev	6002 298 309
--	------------------------	-----------------------------	---

ILS or LOC RWY 2

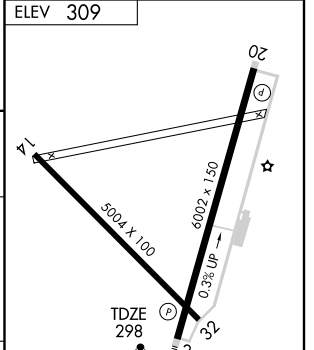
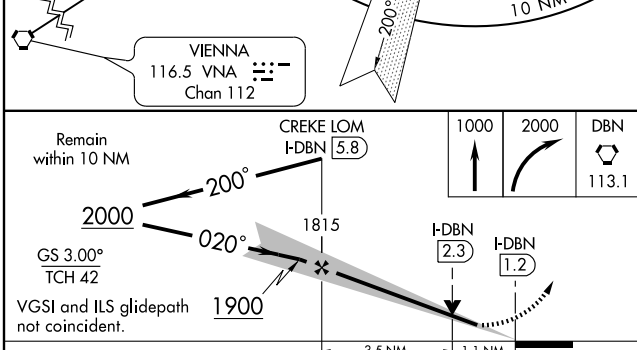
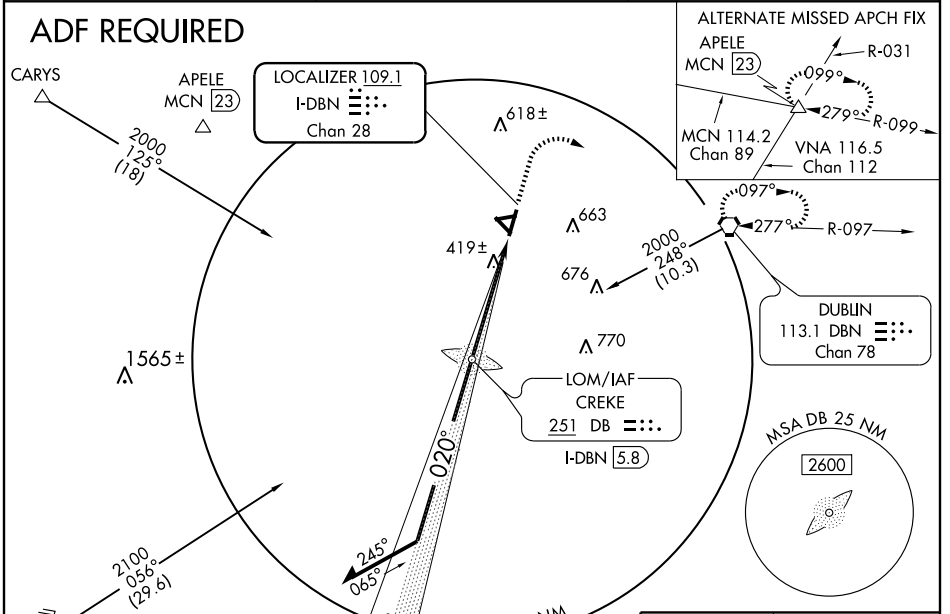
DUBLIN/W.H. "BUD" BARRON (DBN)

When local altimeter setting not received, use Vidalia altimeter setting and increase all DAs/MDAs 100 feet, S-LOC 2 Cats C and D visibility ¼ mile and circling Cat. D visibility ½ mile. For inoperative MALS when using Vidalia altimeter setting increase S-ILS 2 all Cats visibility ½ mile. VDP NA when using Vidalia altimeter setting. ADF or DME Required.

MALS 

MISSED APPROACH: Climb to 1000 then climbing right turn to 2000 direct DBN VORTAC and hold.

AWOS-3 118.425	ATLANTA APP CON * 124.2 279.6	UNICOM 122.7 (CTAF) 0
--------------------------	---	---------------------------------



CATEGORY	A	B	C	D
S-ILS 2	498-½		200 (200-½)	
S-LOC 2	680-½		382 (400-½)	
CIRCLING	760-1		451 (500-1)	
	471 (500-1½)		780-1½	
	1020-2¼		711 (800-2¼)	

FAF to MAP 4.6 NM					
Knots	60	90	120	150	180
Min:Sec	4:36	3:04	2:18	1:50	1:32

SE-4, 22 OCT 2009 to 19 NOV 2009

SE-4, 22 OCT 2009 to 19 NOV 2009