

RNAV (GPS) RWY 32

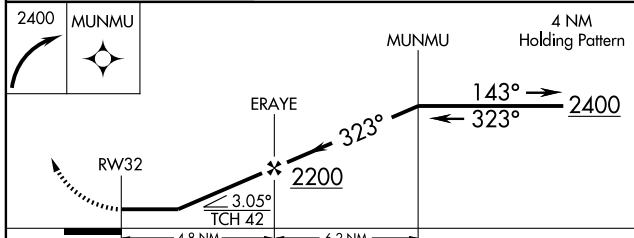
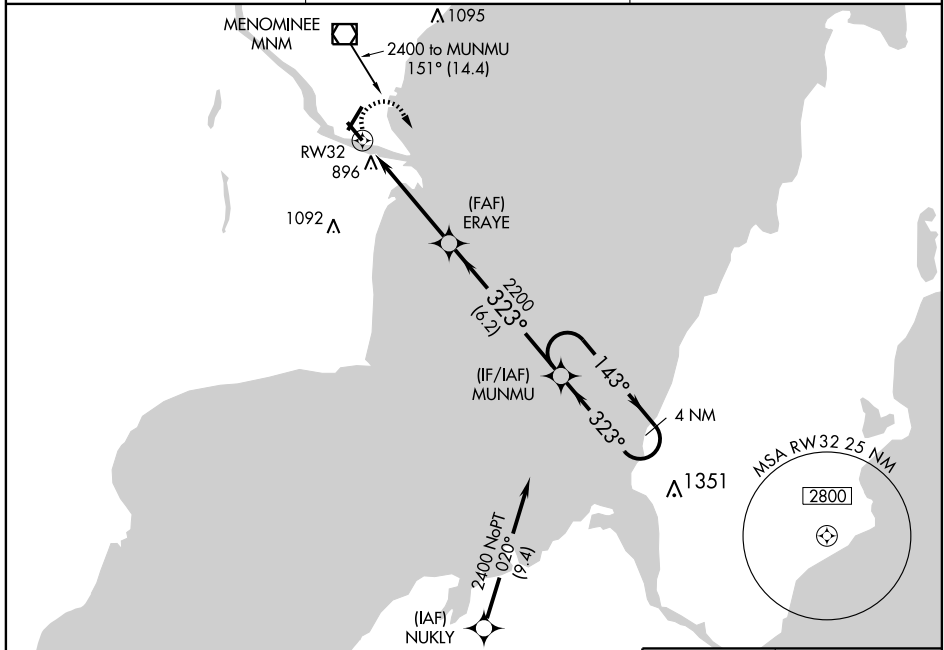
MENOMINEE-MARINETTE TWIN COUNTY (MNM)

APP CRS 323°	Rwy Idg 5100
	TDZE 608
	Apt Elev 625

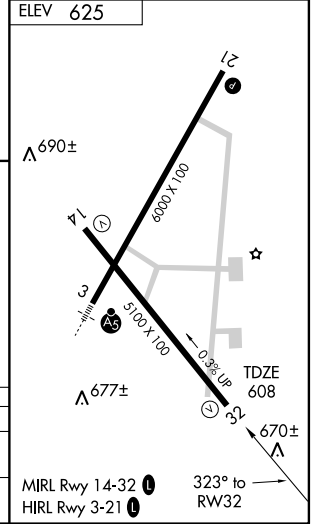
⚠ DME/DME RNP-0.3 NA. When local altimeter setting not received, use Sturgeon Bay altimeter setting and increase all MDA 60 feet, increase LNAV Cat C/D and Circling Cat C visibility ¼ mile.

⚠ MISSED APPROACH: Climbing right turn to 2400 direct MUNMU WP and hold.

AWOS-3 109.6	GREEN BAY APP CON ★ 119.5 338.2	UNICOM 122.8 (CTAF) ①
------------------------	---	---------------------------------



CATEGORY	A	B	C	D
LNVA MDA	1160-1	552 (600-1)	1160-1½ 552 (600-1½)	1160-1¾ 552 (600-1¾)
CIRCLING	1200-1	575 (600-1)	1200-1½ 575 (600-1½)	1200-2 575 (600-2)



EC-1, 22 OCT 2009 to 19 NOV 2009

EC-1, 22 OCT 2009 to 19 NOV 2009