

RNAV (GPS) RWY 30

CLOVIS MUNI (CVN)

APP CRS 302°	Rwy ldg 5697
	TDZE 4202
	Apt Elev 4216

DME/DME RNP-0.3 NA.

MISSED APPROACH: Climbing right turn to 6000 direct LYSOL and hold.

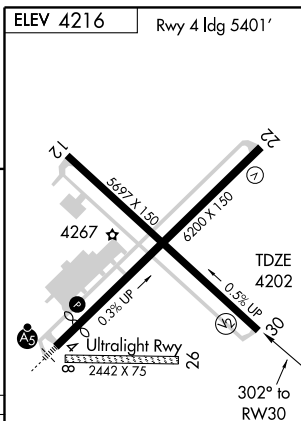
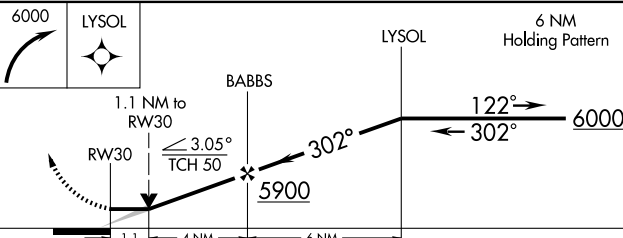
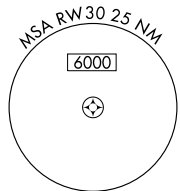
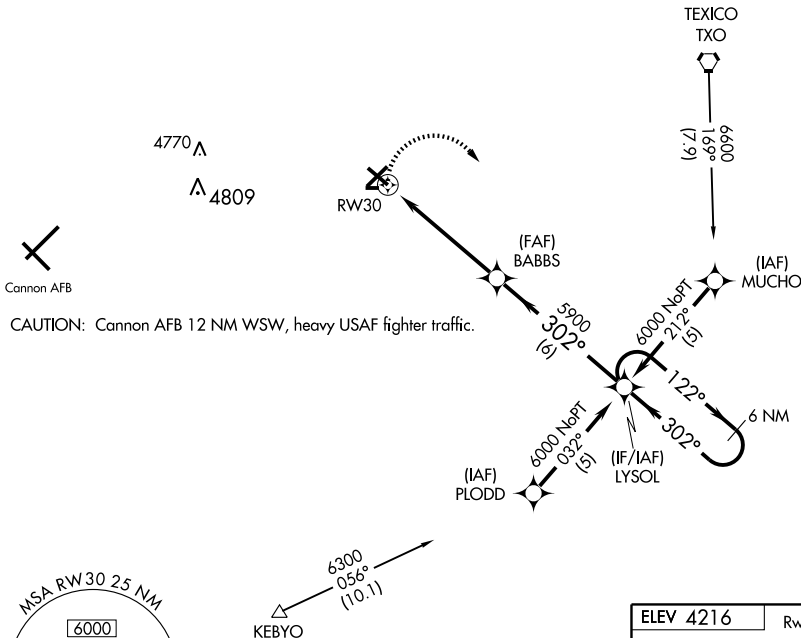
AWOS-3
135.375

CANNON APP CON*
125.5 352.1

CLNC DEL
119.0

UNICOM
122.8 (CTAF)

Procedure NA for arrivals at TXO Vortac via V62 northwest bound.



CATEGORY	A	B	C	D
RNAV MDA	4620-1	418 (500-1)	4620-1¼	418 (500-1¼)
CIRCLING	4680-1	464 (500-1)	4680-1½	4780-2
			464 (500-1½)	564 (600-2)

REIL Rwy 12 and 30
MIRL Rwy 4-22 and 12-30

SW-1, 22 OCT 2009 to 19 NOV 2009

SW-1, 22 OCT 2009 to 19 NOV 2009