

LIMA, OHIO

AL-5143 (FAA)

# RNAV (GPS) RWY 27

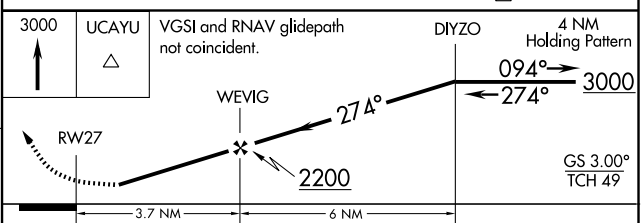
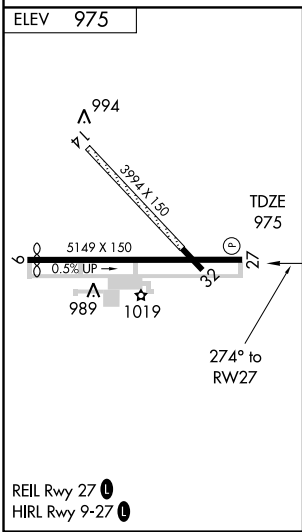
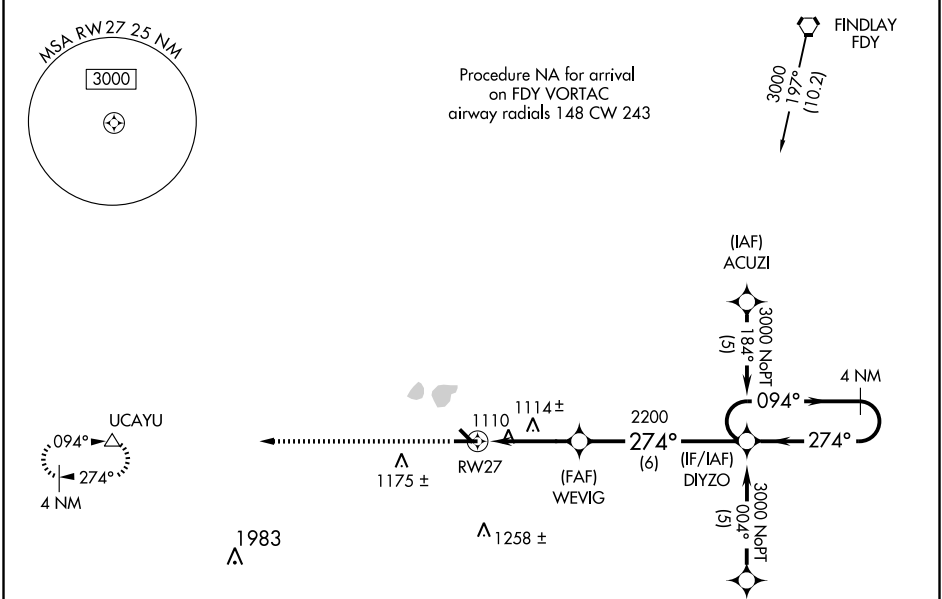
LIMA ALLEN COUNTY (AOH)

WAAS Ch <b>50511</b> <b>W27A</b>	APP CRS <b>274°</b>	Rwy Idg <b>5149</b> TDZE <b>975</b> Apt Elev <b>975</b>
--	------------------------	---

**⚠** Baro-VNAV NA when using Findlay altimeter setting. For uncompensated Baro-VNAV systems, LNAV/VNAV NA below -16°C (4°F) or above 46°C (114°F). DME/DME RNP-0.3 NA.  
**⚠** Visibility reduction by helicopters NA. When local altimeter setting not received, use Findlay altimeter setting and increase all DA/MDA 80 feet, increase LPV and LNAV/VNAV all Cats visibilities ¼ mile, and increase LNAV Cat D visibility ½ mile.

MISSED APPROACH: Climb to 3000 direct UCAYU and hold. When authorized by ATC, climb-in-hold to 6000.

ASOS <b>108.4</b>	INDIANAPOLIS CENTER <b>128.075 269.0</b>	UNICOM <b>122.7 (CTAF) 0</b>
----------------------	---	---------------------------------



CATEGORY	A	B	C	D
LPV DA	1270-1 295 (300-1)			
LNAV/VNAV DA	1391-1½ 416 (500-1½)			
LNAV MDA	1380-1	405 (500-1)	1380-1¼	405 (500-1¼)
CIRCLING	1420-1 445 (500-1)	1440-1 465 (500-1)	1440-1½ 465 (500-1½)	1540-2 565 (600-2)

LIMA, OHIO  
Orig 09155

40°42'N - 84°02'W

# RNAV (GPS) RWY 27

EC-2, 22 OCT 2009 to 19 NOV 2009

EC-2, 22 OCT 2009 to 19 NOV 2009