

LIMA, OHIO

AL-5143 (FAA)

LOC I-AOH <b>109.3</b>	APP CRS <b>274°</b>	Rwy ldg <b>5149</b>
		TDZE <b>975</b>
		Apt Elev <b>975</b>

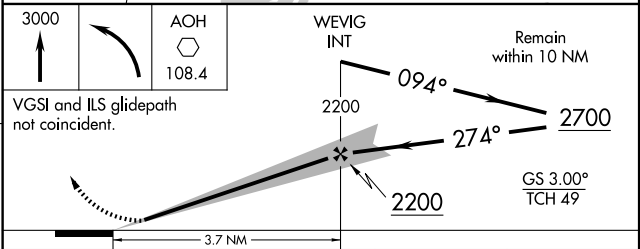
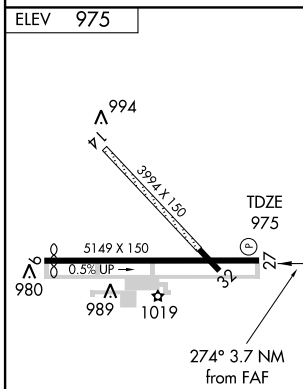
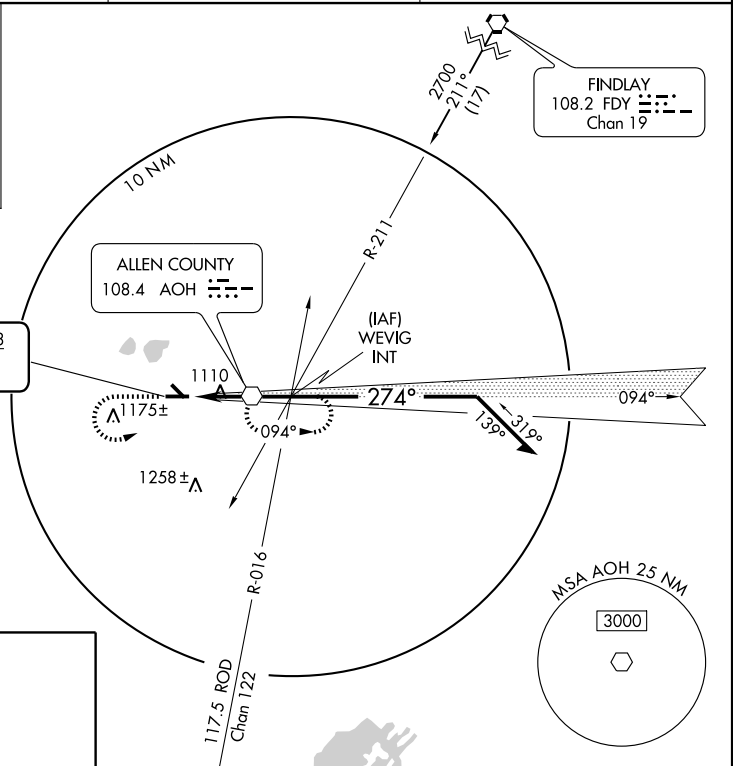
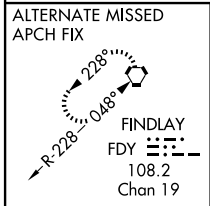
# ILS or LOC RWY 27

LIMA ALLEN COUNTY (AOH)

**▽** Visibility reduction by helicopters NA. When local altimeter setting not received, use Findlay altimeter setting and increase all DA/MDA 80 feet, increase S-ILS 27 all Cnts visibility ¼ mile and increase S-LOC 27 Cat D visibility ¼ mile.

**△ NA** MISSED APPROACH: Climb to 3000, then left turn direct AOH VOR and hold.

ASOS <b>108.4</b>	INDIANAPOLIS CENTER <b>128.075 269.0</b>	UNICOM <b>122.7 (CTAF) 0</b>
----------------------	---	---------------------------------



FAF to MAP 3.7 NM	Knots	60	90	120	150	180
Min:Sec	3:42	2:28	1:51	1:29	1:14	

CATEGORY	A	B	C	D
S-ILS 27	1225-1		250 (300-1)	
S-LOC 27	1380-1 405 (500-1)		1380-1¼ 405 (500-1¼)	
CIRCLING	1420-1 445 (500-1)	1440-1 465 (500-1)	1440-1½ 465 (500-1½)	1540-2 565 (600-2)

LIMA, OHIO  
Amdt 3 09071

40°42'N - 84°02'W

# LIMA ALLEN COUNTY (AOH) ILS or LOC RWY 27

EC-2, 22 OCT 2009 to 19 NOV 2009

EC-2, 22 OCT 2009 to 19 NOV 2009