

WICHITA, KANSAS

AL-5142 (FAA)

VOR-C  
WICHITA/CESSNA AIRCRAFT FIELD (C/A)

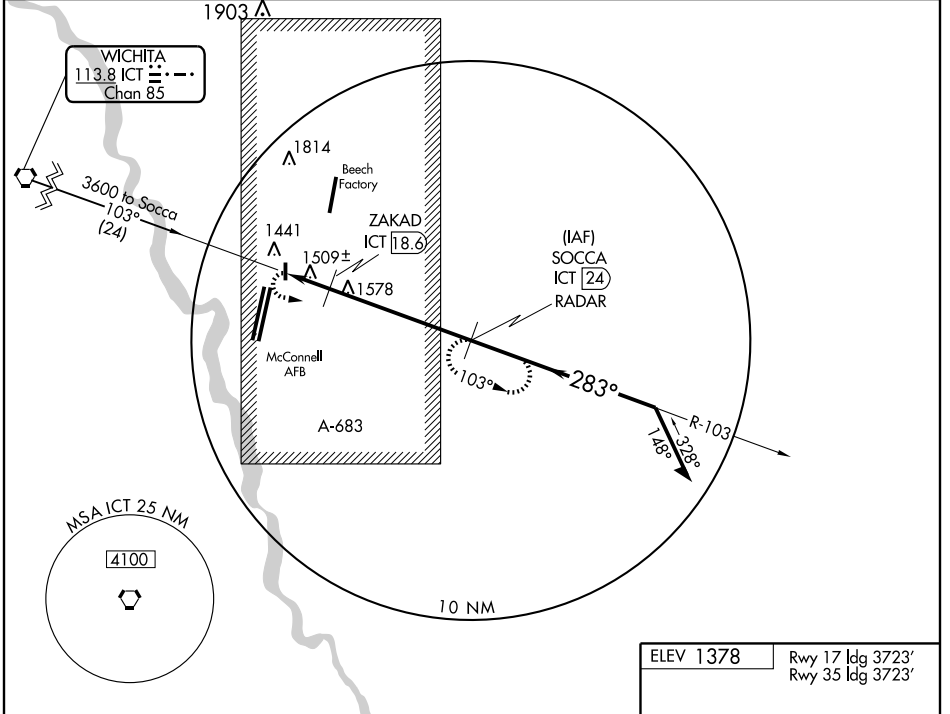
VORTAC ICT <b>113.8</b> Chan <b>85</b>	APP CRS <b>283°</b>	Rwy ldg TDZE Apt Elev <b>1378</b>	N/A N/A <b>1378</b>
--	------------------------	--	---------------------------

WICHITA/CESSNA AIRCRAFT FIELD (C/A)

**▲ NA** Use Wichita Mid-Continent altimeter setting. Procedure not authorized at night. DME or RADAR required.

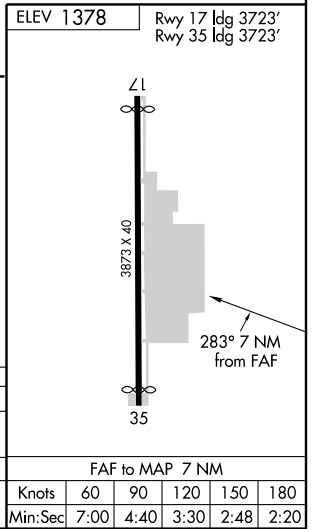
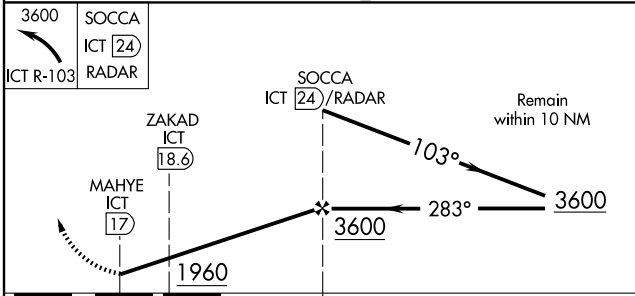
MISSED APPROACH: Climbing left turn to 3600 via ICT R-103 to SOCCA 24 DME/RADAR and hold.

WICHITA APP CON **134.8 269.1**      CTAF **122.9**



NC-2, 22 OCT 2009 to 19 NOV 2009

NC-2, 22 OCT 2009 to 19 NOV 2009



CATEGORY	A	B	C	D	FAF to MAP 7 NM					
CIRCLING	1960-1	582 (600-1)	1960-1½ 582 (600-1½)	NA	Knots	60	90	120	150	180
ZAKAD FIX MINIMUMS					Min:Sec	7:00	4:40	3:30	2:48	2:20
CIRCLING	1840-1	462 (500-1)	1840-1½ 462 (500-1½)	NA						

WICHITA, KANSAS  
Amdt 1 03303

WICHITA/CESSNA AIRCRAFT FIELD (C/A)  
VOR-C

37°39'N-97°15'W