

WICHITA, KANSAS

AL-5142 (FAA)

RNAV (GPS) -D
WICHITA/CESSNA AIRCRAFT FIELD (CEA)

APP CRS 280°	Rwy Idg TDZE Apt Elev N/A N/A 1378
------------------------	--

▲ NA DME/DME RNP-0.3 NA. Procedure NA at night. Use Wichita Mid-Continent altimeter setting; when not received, use Colonel James Jabara altimeter setting.

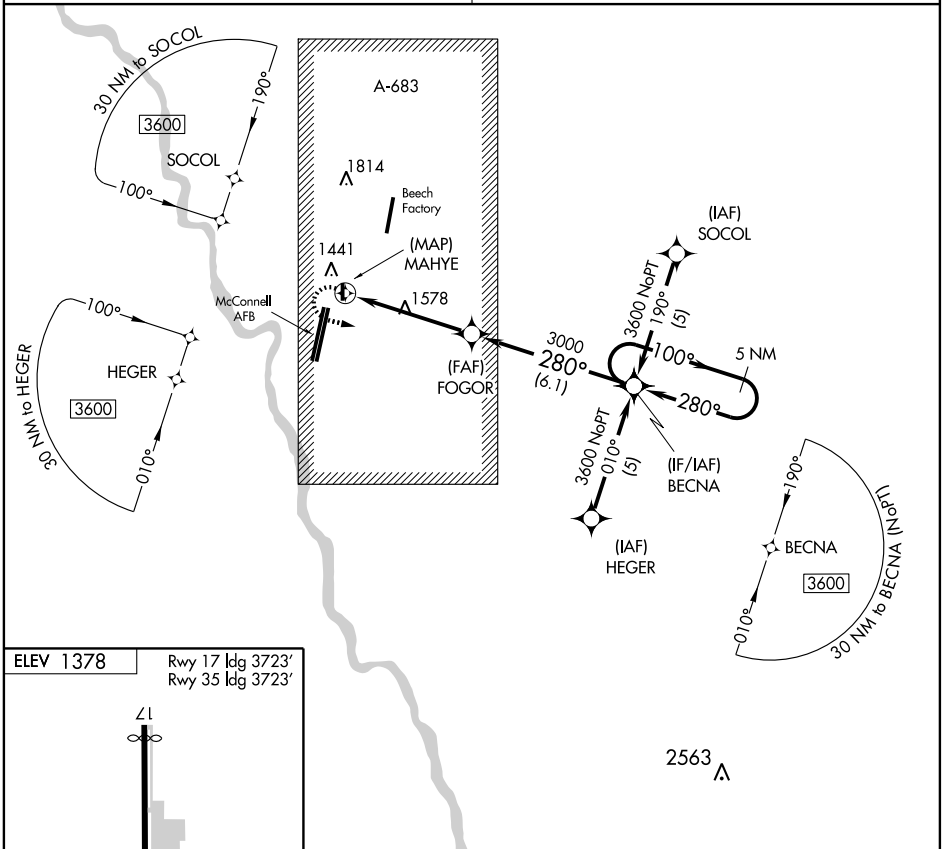
MISSED APPROACH: Climbing left turn to 3600 direct BECNA and hold.

WICHITA APP CON
134.8 269.1

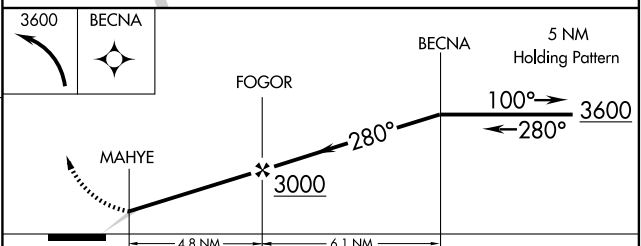
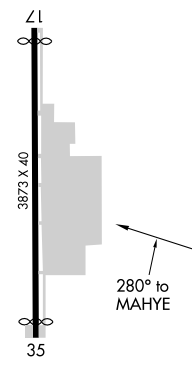
CTAF
122.9

NC-2, 22 OCT 2009 to 19 NOV 2009

NC-2, 22 OCT 2009 to 19 NOV 2009



ELEV 1378	Rwy 17 Idg 3723' Rwy 35 Idg 3723'
-----------	--------------------------------------



CATEGORY	A	B	C	D
CIRCLING	1920-1	542 (600-1)	1920-1½ 542 (600-1½)	NA

WICHITA, KANSAS
Amdt 1 07298

37° 39' N-97° 15' W

WICHITA/CESSNA AIRCRAFT FIELD (CEA)
RNAV (GPS) -D