

WICHITA, KANSAS

AL-5141 (FAA)

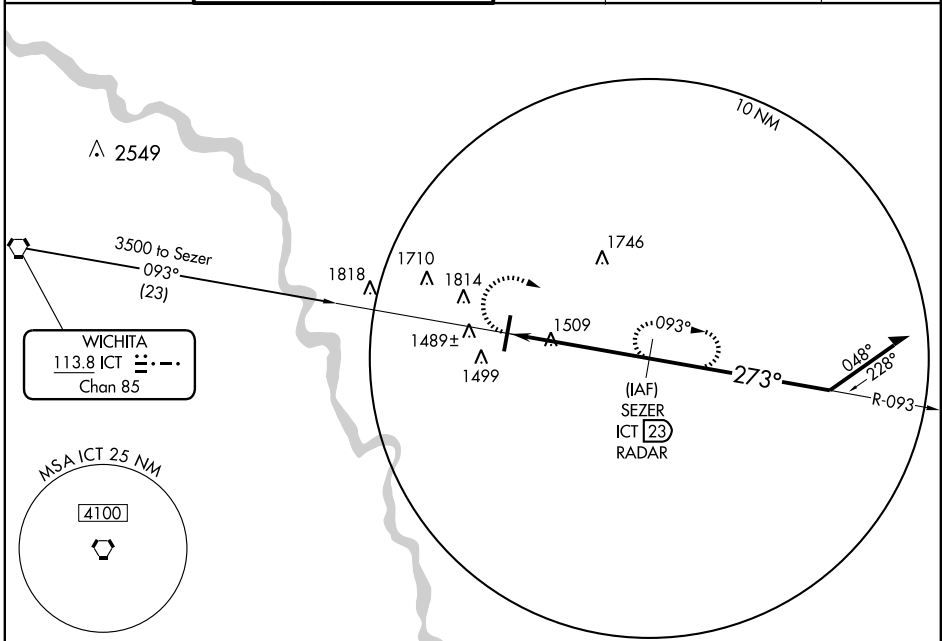
VOR-B
WICHITA/BEECH FACTORY (B/E/C)

VORTAC ICT 113.8 Chan 85	APP CRS 273°	Rwy Idg TDZE Apt Elev 1408	N/A N/A 1408
--	------------------------	--	---------------------------

Obtain local altimeter setting on CTAF; when not received use Wichita Mid-Continent altimeter setting.

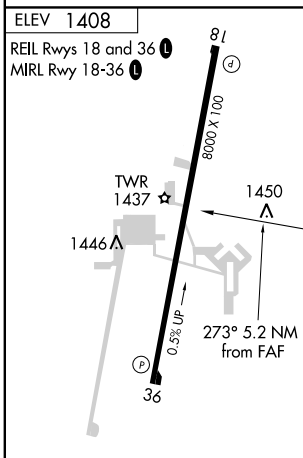
MISSED APPROACH: Climbing right turn to 3000 via ICT VORTAC R-093 to SEZER 23 DME/RADAR and hold.

WICHITA APP CON 134.8 269.1	BEECH TOWER * 126.8 (CTAF) 313.6 CTAF 122.7 (When tower closed)	GND CON 121.7	CLNC DEL 125.0 (When tower closed)	UNICOM 122.95
---------------------------------------	--	-------------------------	--	-------------------------

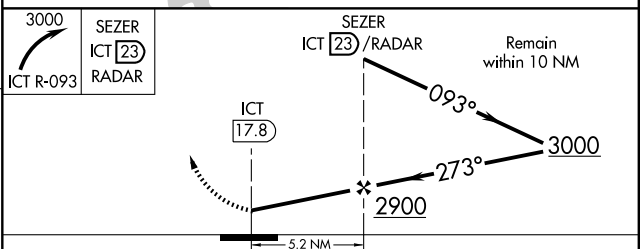


NC-2, 22 OCT 2009 to 19 NOV 2009

NC-2, 22 OCT 2009 to 19 NOV 2009



RADAR or DME REQUIRED



CATEGORY	A	B	C	D
CIRCLING	1820-1 412 (500-1)	1860-1 452 (500-1)	1980-1½ 572 (600-1½)	2120-2¼ 712 (800-2¼)
WICHITA MID-CONTINENT ALTIMETER SETTING MINIMUMS				
CIRCLING	1860-1	452 (500-1)	2020-1¾ 612 (700-1¾)	2160-2½ 752 (800-2½)

FAF to MAP 5.2 NM					
Knots	60	90	120	150	180
Min:Sec	5:12	3:28	2:36	2:05	1:44

WICHITA, KANSAS
Amdt 3 08101

37° 42' N-97° 13' W

WICHITA/BEECH FACTORY (B/E/C)
VOR-B