

VOR/DME DUC 111.0 Chan 47	APP CRS 326°	Rwy Idg 6650 TDZE 1097 Apt Elev 1113
---	------------------------	---

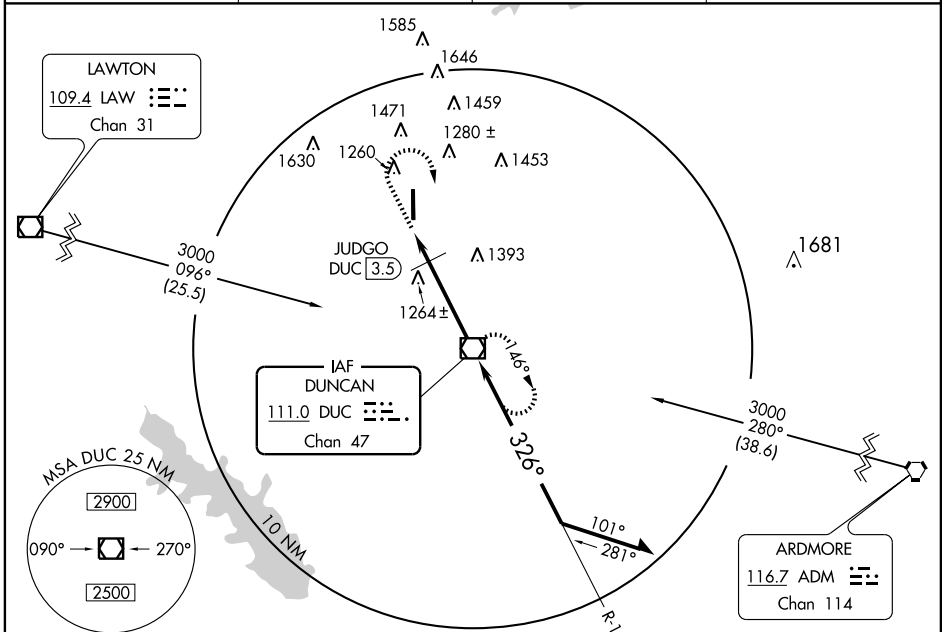
VOR RWY 35

DUNCAN/ HALLBURTON FIELD (DUC)

⚠ When local altimeter setting not received, use Henry Post AAF, Fort Sill altimeter setting and increase all MDAs 80 feet and visibility S-35
⚠NA Cat D ¼ mile, DME S-35 Cat C/D ¼ mile and circling Cat D ¼ mile.

MISSED APPROACH: Climb to 1700 then climbing right turn to 3000 direct DUC VOR/DME and hold.

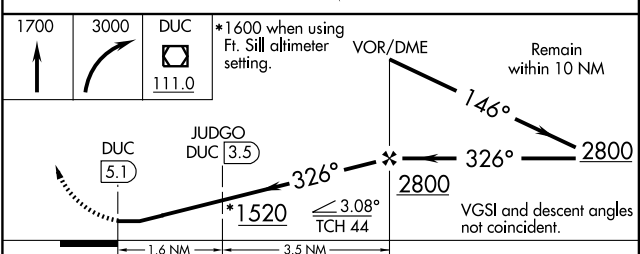
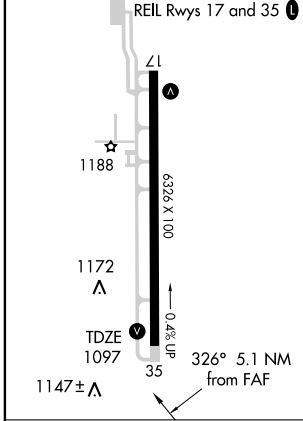
AWOS-3 119.075	FORT SILL APP CON 118.6 290.375	CLNC DEL 118.4	UNICOM 122.8 (CTAF) 0
--------------------------	---	--------------------------	---------------------------------



SC-1, 22 OCT 2009 to 19 NOV 2009

SC-1, 22 OCT 2009 to 19 NOV 2009

ELEV 1113 MIRL Rwy 17-35



CATEGORY	A	B	C	D
S-35	1520-1	423 (500-1)	1520-1¼	423 (500-1¼)
CIRCLING	1540-1 427 (500-1)	1580-1 467 (500-1)	1580-1½ 467 (500-1½)	1840-2¼ 727 (800-2¼)
JUDGO FIX MINIMUMS				
S-35	1460-1 363 (400-1)			1460-1¼ 363 (400-1¼)
CIRCLING	1540-1 427 (500-1)	1580-1 467 (500-1)	1580-1½ 467 (500-1½)	1840-2¼ 727 (800-2¼)

FAF to MAP 5.1 NM

Knots	60	90	120	150	180
Min:Sec	5:06	3:24	2:33	2:02	1:42