

# RNAV (GPS) RWY 20

CEDAR CITY RGNL (CDC)

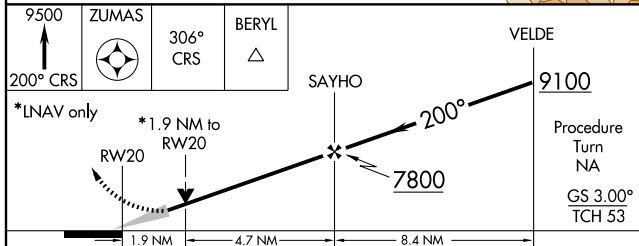
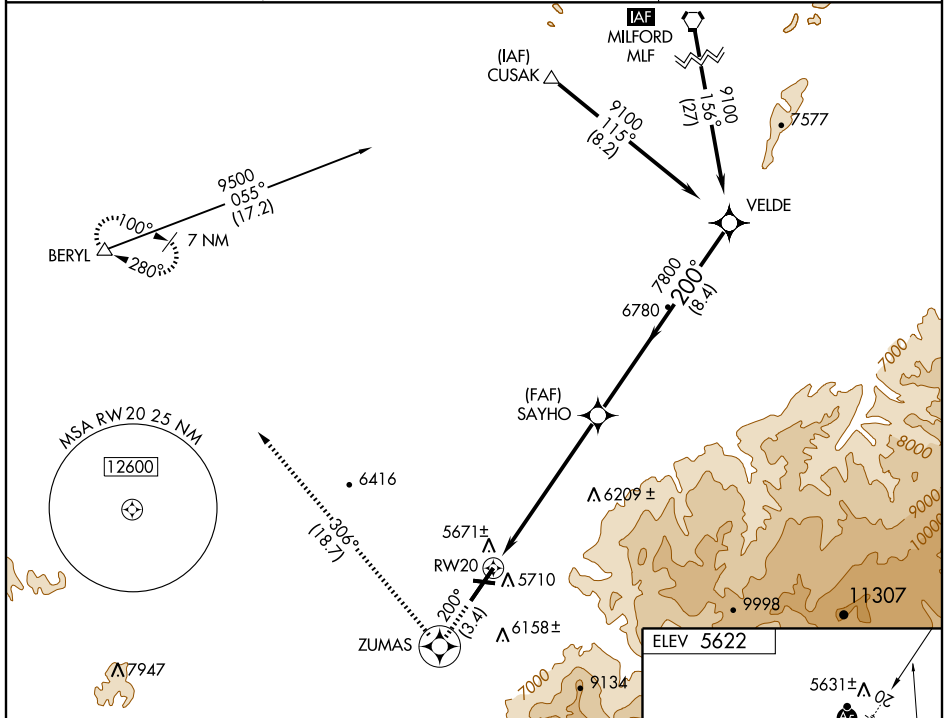
APP CRS <b>200°</b>	Rwy Idg <b>8653</b>
	TDZE <b>5600</b>
	Apt Elev <b>5622</b>

**NA** GPS or RNP-0.3 required. DME/DME RNP-0.3 NA.  
 Baro-VNAV NA below -26° C (-15° F)  
 Circling not authorized east of Rwy 2-20.  
**IAF** ARM APPROACH MODE PRIOR TO IAF.

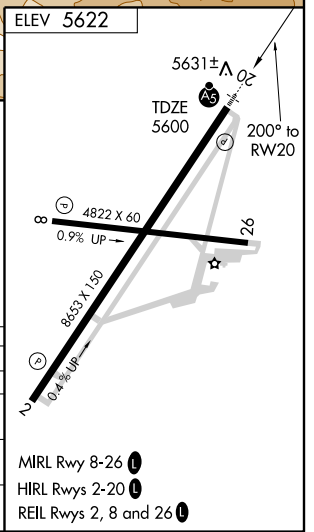
**MALSR**

**MISSED APPROACH:** Climb to 9500 via 200° course to ZUMAS WP then via 306° course to BERYL WP and hold.

ASOS <b>119.025</b>	CEDAR CITY RADIO <b>122.6 255.4</b>	UNICOM <b>123.0 (CTAF) 0</b>
------------------------	--	---------------------------------



CATEGORY	A	B	C	D
GLS DA	NA			
LNAV/VNAV	6000-1 400 (400-1)			
LNAV MDA	6260-1½	660 (700-1½)	6260-1¼ 660 (700-1¼)	6260-1½ 660 (700-1½)
CIRCLING	6260-1½	638 (700-1½)	6260-1¾ 638 (700-1¾)	6440-2¾ 818 (900-2¾)



SW-4, 22 OCT 2009 to 19 NOV 2009

SW-4, 22 OCT 2009 to 19 NOV 2009