
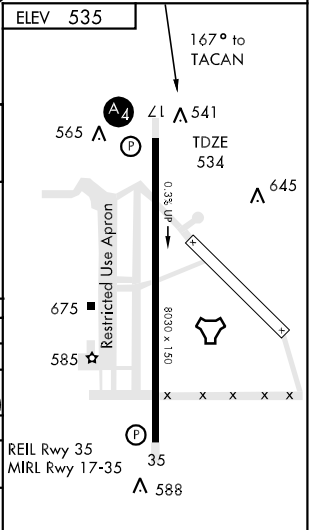
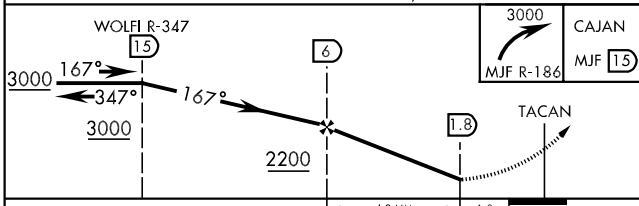
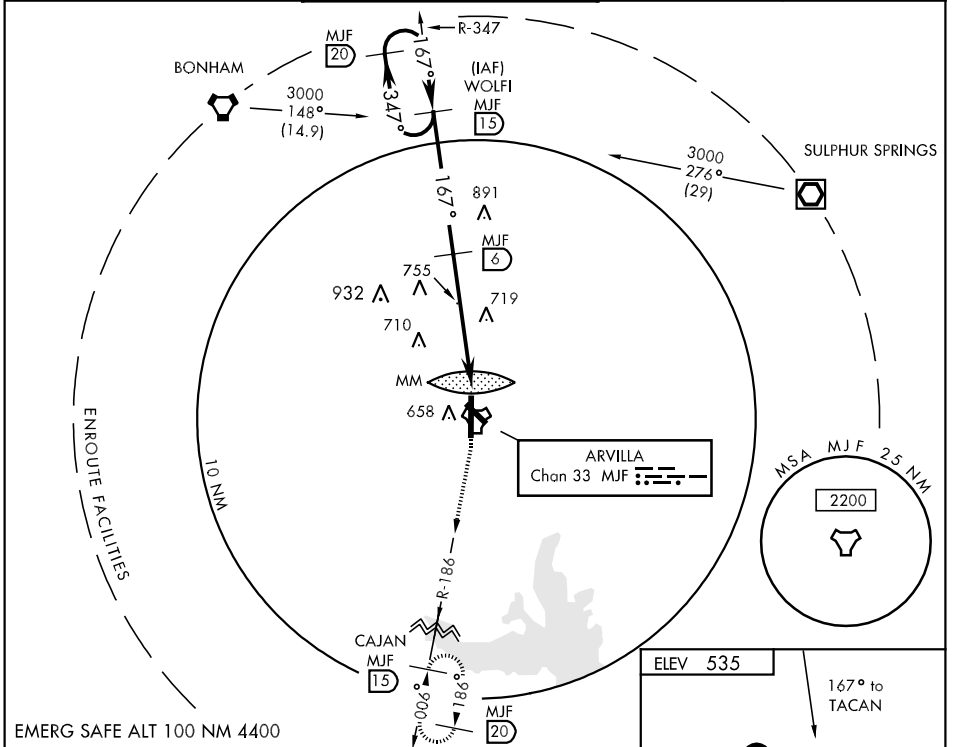


TACAN MJF Chan <b>33</b>	APCH CRS <b>167°</b>	Rwy Idg TDZE Arpt Elev <b>8030</b> <b>534</b> <b>535</b>	AL-5138 [USAF]	GREENVILLE/ MAJORS (KGVF)
-----------------------------	-------------------------	---	----------------	---------------------------

<p>▼ * When ALS inop, increase CAT DE vis to 1¼ miles.                  ** When ALS inop, increase CAT D vis to 2 miles, CAT E vis to 2¼ miles.                  ▲ NA When control tower closed, use Dallas-Love Field altimeter setting.</p>	<p>MALS  </p>	<p>MISSED APPROACH: Climb to 3000 via MJF TACAN R-186 to CAJAN 15 DME and hold.</p>
---	--	---

FORT WORTH CENTER <b>132.85 360.75</b>	MAJORS TOWER * <b>118.65 (CTAF) 0 385.425</b>	GND CON <b>121.7 335.8</b>	UNICOM <b>122.95</b>
---	--	-------------------------------	-------------------------



CATEGORY	A	B	C	D	E
S-17 *	1060-1¼	526 (600-1¼)		1060-1½	526 (600-1½)
CIRCLING	1060-1¼	525 (600-1¼)	1060-1½	1100-2	1280-2¾
			525 (600-1½)	565 (600-2)	745 (800-2¾)
DALLAS-LOVE ALTIMETER SETTING MINIMUMS					
S-17 **	1160-1¼	626 (700-1¼)	1160-1½	1160-1¾	1160-2
CIRCLING	1160-1¼	625 (700-1¼)	1160-1½	1180-2	1380-3
			626 (700-1½)	626 (700-1¾)	626 (700-2)
			625 (700-1¾)	645 (700-2)	845 (900-3)

SC-2, 22 OCT 2009 to 19 NOV 2009

SC-2, 22 OCT 2009 to 19 NOV 2009