

RNAV (GPS) RWY 35

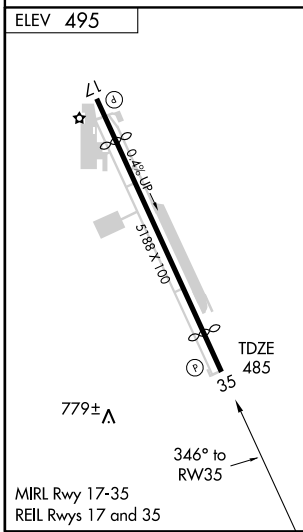
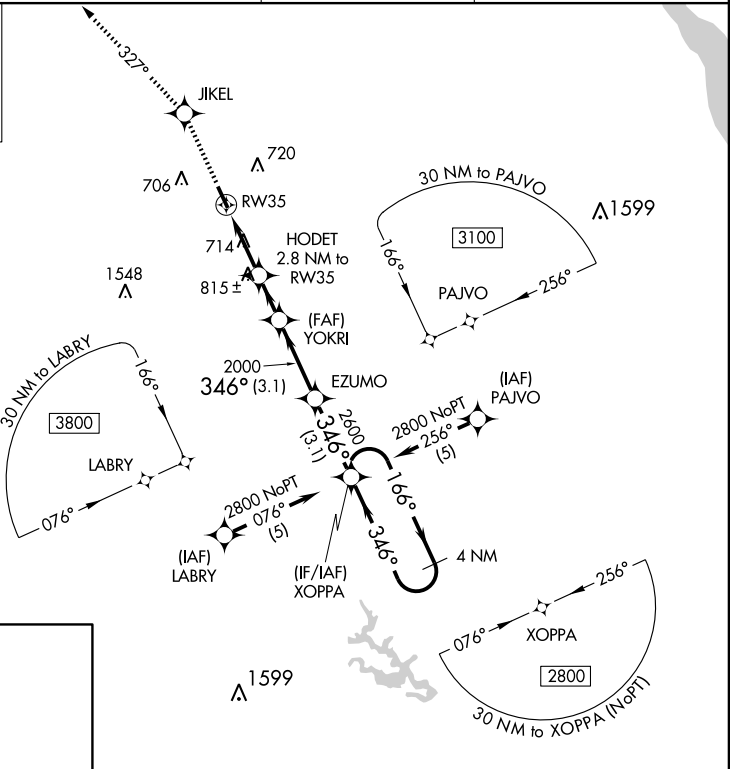
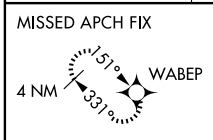
YORK (THV)

APP CRS	Rwy Idg	4449
346°	TDZE	485
	Apt Elev	495

▼ DME/DME RNP-0.3 NA. Visibility reduction by helicopters NA.
▲ When local altimeter setting not received, use Harrisburg Intl altimeter setting and increase all MDA 80 feet, increase LNAV Cat C and D visibility 1/2 mile, Circling Cat C and D visibility 1/4 mile.

MISSED APPROACH: Climb to 3300 direct JIKEL and via track 327° to WABEP and hold.

ASOS 119.275	HARRISBURG APP CON 124.1 273.525	CLNC DEL 121.65	UNICOM 123.0 (CTAF)
------------------------	--	---------------------------	-------------------------------



3300	JIKEL	TRK 327°	WABEP	4 NM Holding Pattern			
	HODET 2.8 NM to RW35	YOKRI	EZUMO	XOPPA	166° → 2800		
	RW35	3.04° TCH 45	2000	2600	← 346°		
	1420		2000		VGSI and descent angles not coincident.		
	2.8 NM		1.8 NM		3.1 NM		3.1 NM
CATEGORY	A		B		C		D
LNAV MDA	1080-1		595 (600-1)		1080-1½ 595 (600-1½)		1080-1¾ 595 (600-1¾)
CIRCLING	1220-1 725 (800-1)		1240-1¼ 745 (800-1¼)		1260-2¼ 765 (800-2¼)		1260-2½ 765 (800-2½)

NE-4, 22 OCT 2009 to 19 NOV 2009

NE-4, 22 OCT 2009 to 19 NOV 2009