

ANAHEIM THREE DEPARTURE

SL-5136 (FAA)

FULLERTON MUNI (FUL)
FULLERTON, CALIFORNIA

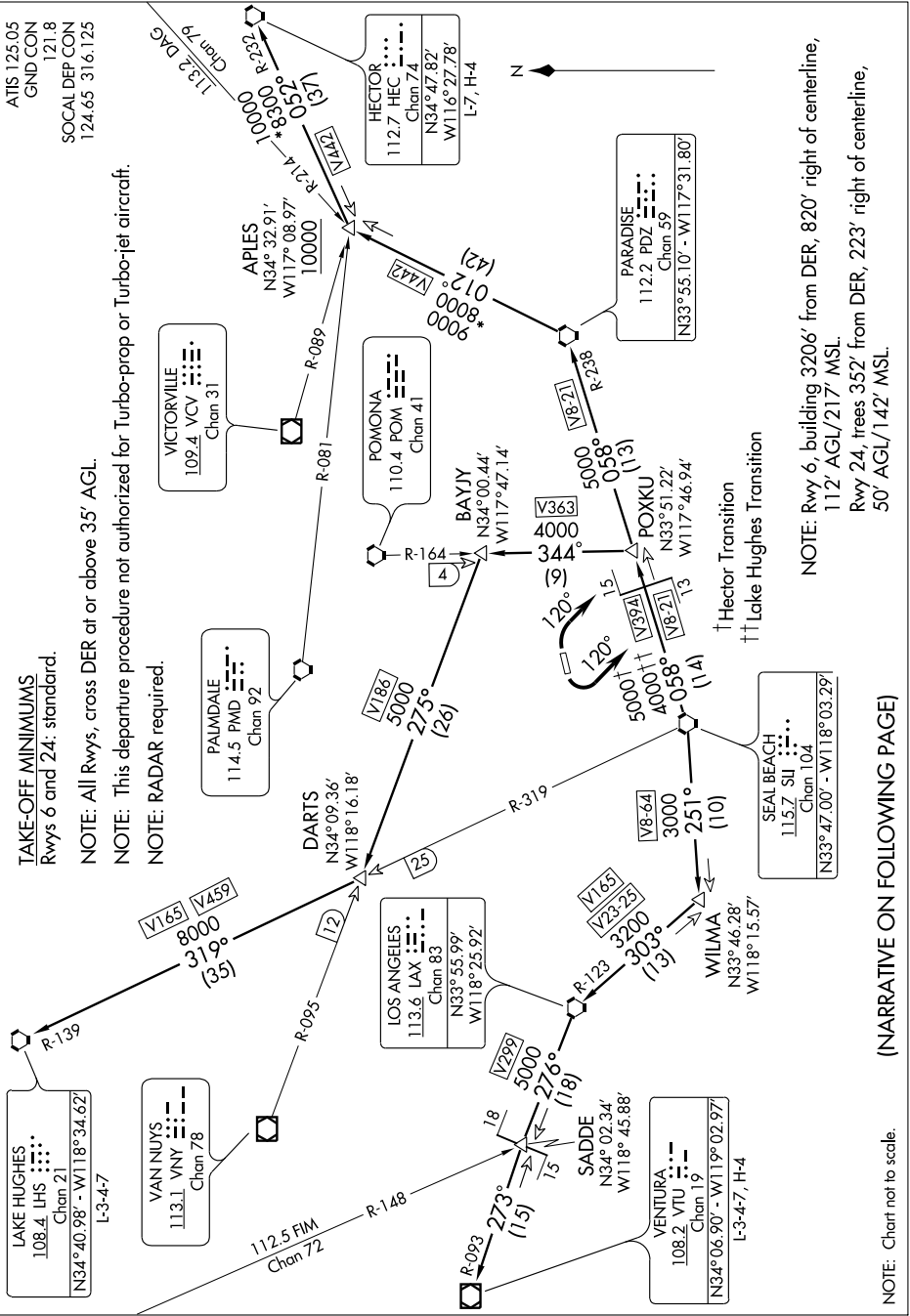
600Z MON 19 11 01 600Z TUE 22 22 'E-WS

TAKE-OFF MINIMUMS
Rwys 6 and 24: standard.

NOTE: All Rwys, cross DER at or above 35' AGL.

NOTE: This departure procedure not authorized for Turbo-prop or Turbo-jet aircraft.

NOTE: RADAR required.



ATIS 125.05
GND CON 121.8
SOCAL DEP CON 124.65 316.125

LAKE HUGHES 108.4 LHS Chan 21
L-3-4-7

VAN NUYS 113.1 VNY Chan 78

LOS ANGELES 113.6 LAX Chan 83
N33°55.99' W118°25.92'

DARTS 114.5 PMD Chan 92
N34°09.36' W118°16.18'

PALMDALE 114.5 PMD Chan 92
N34°09.36' W118°16.18'

VICTORVILLE 109.4 VCV Chan 31
N34°32.91' W117°08.97'

POMONA 110.4 POM Chan 41
N34°00.44' W117°47.14'

BAYJY 110.4 POM Chan 41
N34°00.44' W117°47.14'

APLES 110.4 POM Chan 41
N34°00.44' W117°47.14'

HECTOR 112.7 HEC Chan 74
N34°47.82' W116°27.78'
L-7, H-4

PARADISE 112.2 PDZ Chan 59
N33°55.10' - W117°31.80'

SEAL BEACH 115.7 SLI Chan 104
N33°47.00' - W118°03.29'

WILMA 115.7 SLI Chan 104
N33°46.28' W118°15.57'

SADDE 115.7 SLI Chan 19
N34°02.34' W118°45.88'

VENTURA 108.2 VTU Chan 19
N34°06.90' - W119°02.97'
L-3-4-7, H-4

NOTE: Rwy 6, building 3206' from DER, 820' right of centerline, 112' AGL/217' MSL.
Rwy 24, trees 352' from DER, 223' right of centerline, 50' AGL/142' MSL.

† Hector Transition
‡ Lake Hughes Transition

(NARRATIVE ON FOLLOWING PAGE)

NOTE: Chart not to scale.