

WAAS CH 82506 W29A	APP CRS 293°	Rwy Idg TDZE Apt Elev	5400 660 660
----------------------------------------	------------------------	-----------------------------	-----------------------------------------

RNAV (GPS) RWY 29

COATESVILLE/CHESTER COUNTY G.O. CARLSON (MQS)

Baro-VNAV NA when using Pottstown-Limerick altimeter setting. For uncompensated Baro-VNAV systems, LNAV/VNAV NA below -1.6°C (4°F) or above 47°C (116°F). DME/DME RNP-0.3 NA. Visibility reduction by helicopters NA. When local altimeter setting not received, use Pottstown-Limerick altimeter setting and increase all DA 98 feet and all MDA 100 feet, LPV visibility ¼ mile all Cats, LNAV/VNAV visibility ¼ mile all Cats, LNAV visibility Cats C and D ¼ mile, and Circling visibility Cat C and D ¼ mile. VDP NA when using Pottstown-Limerick altimeter setting.

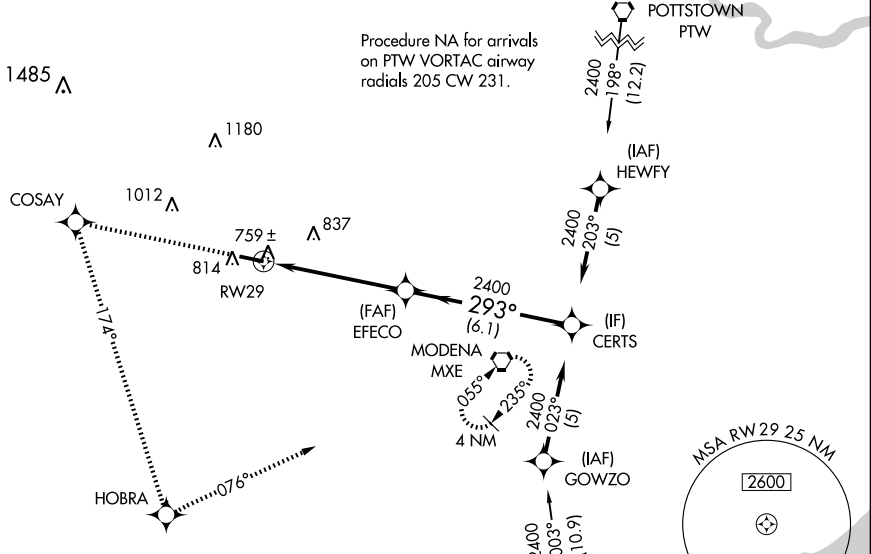
MISSED APPROACH: Climb to 2400 direct COSAY and left turn via 174° track to HOBRA and left turn via 076° track to MXE VORTAC and hold.

AWOS-3
126.25

PHILADELPHIA APP CON
124.35 319.15

CLNC DEL
125.6

UNICOM
122.7 (CTAF) 0

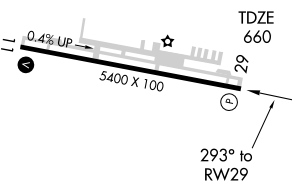
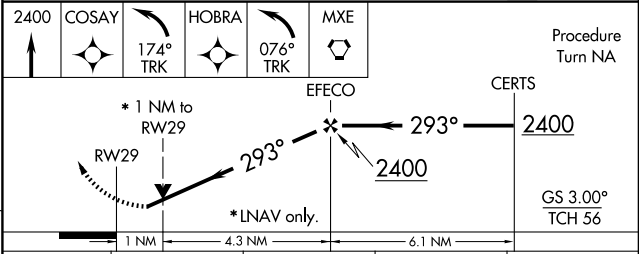


NE-4, 22 OCT 2009 to 19 NOV 2009

NE-4, 22 OCT 2009 to 19 NOV 2009

ELEV 660

Procedure NA for arrivals on DGO VORTAC airway radials 309 CW 053.



CATEGORY	A	B	C	D
LPV DA		938-1	278 (300-1)	
LNAV/VNAV DA		1029-1¼	369 (400-1¼)	
LNAV MDA	1020-1	360 (400-1)		1020-1¼ 360 (400-1¼)
CIRCLING	1120-1	460 (500-1)	1220-1½ 560 (600-1½)	1240-2 580 (600-2)

HIRL Rwy 11-29 0
REIL Rwy 11-29 0