

RNAV (GPS) RWY 11

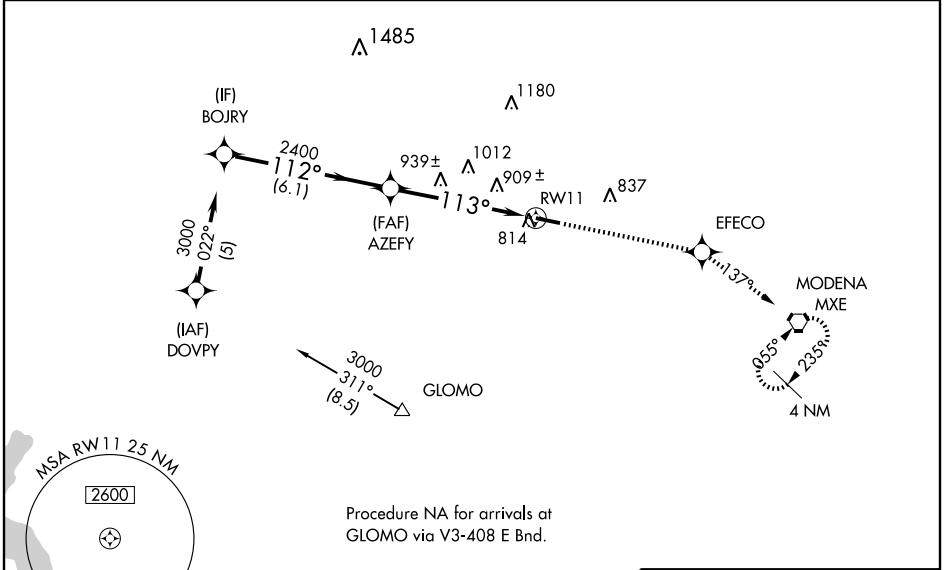
COATESVILLE / CHESTER COUNTY G.O. CARLSON (MQS)

WAAS CH 63006 W11A	APP CRS 113°	Rwy Idg 5400 TDZE 644 Apt Elev 660
--	------------------------	---

Baro-VNAV NA when using Pottstown-Limerick altimeter setting. For uncompensated Baro-VNAV systems, LNAV/VNAV NA below -16°C (4°F) or above 47°C (116°F). DME/DME RNP-0.3 NA. Visibility reduction by helicopters NA. When local altimeter setting not received, use Pottstown-Limerick altimeter setting and increase all DA 98 feet and all MDA 100 feet, LPV visibility ½ mile all Cats, LNAV/VNAV visibility ½ mile all Cats, LNAV visibility Cats C and D ¼ mile, and Circling visibility Cat C and D ¼ mile.

MISSED APPROACH: Climb to 2400 direct EFECO and via 137° track to MXE VORTAC and hold.

AWOS-3 126.25	PHILADELPHIA APP CON 124.35 319.15	CLNC DEL 125.6	UNICOM 122.7 (CTAF) 0
-------------------------	--	--------------------------	---------------------------------



NE-4, 22 OCT 2009 to 19 NOV 2009

NE-4, 22 OCT 2009 to 19 NOV 2009

ELEV 660				
BOJRY		2400	EFECO	MXE
3000		↑	137° TRK	⬡
Procedure Turn NA				
GS 3.00°				
TCH 42				
112°				
AZEFY				
2400				
113°				
RW11				
6.1 NM		5.3 NM		
113° to RW11		0.4% UP		
TDZE 644		5400 X 100		
CATEGORY		A	B	C
LPV DA			955-1	311 (400-1)
LNAV/VNAV DA			1274-2¼	630 (700-2¼)
LNAV MDA	1200-1	556 (600-1)	1200-1½ 556 (600-1½)	1200-1¾ 556 (600-1¾)
CIRCLING	1200-1	540 (600-1)	1220-1½ 560 (600-1½)	1240-2 580 (600-2)
		HIRL Rwy 11-29 0		
		REIL Rwy 11-29 0		