

LOC I-MQS 108.5	APP CRS 293°	Rwy Idg 5400
		TDZE 660
		Apt Elev 660

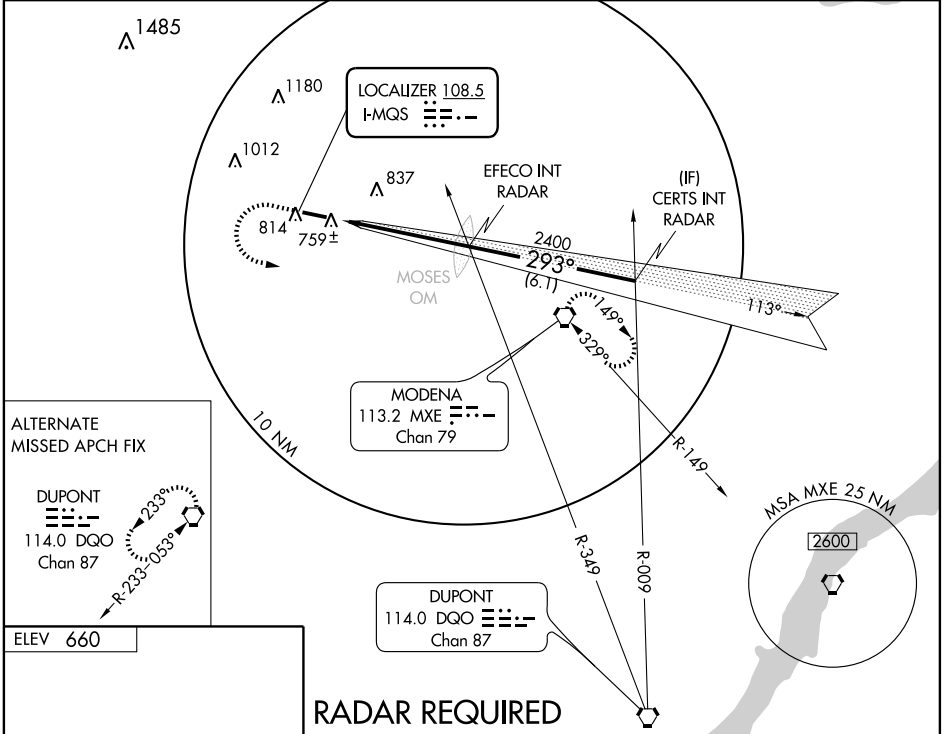
ILS or LOC RWY 29

COATESVILLE / CHESTER COUNTY G.O. CARLSON (MQS)

▼ Visibility reduction by helicopters NA.
▲ When local altimeter setting not received, use Pottstown-Limerick altimeter setting and increase all DA 98 feet, and all MDA 100 feet, S-ILS 29 visibility ¼ mile all Cats, S-LOC 29 visibility Cats C and D ¼ mile, and Circling visibility Cat C and D ¼ mile.

MISSED APPROACH: Climb to 1300 then climbing left turn to 2400 direct MXE VORTAC and hold.

AWOS-3 126.25	PHILADELPHIA APP CON 124.35 319.15	CLNC DEL 125.6	UNICOM 122.7 (CTAF) 0
-------------------------	--	--------------------------	---------------------------------



NE-4, 22 OCT 2009 to 19 NOV 2009

NE-4, 22 OCT 2009 to 19 NOV 2009

ALTERNATE MISSED APCH FIX

DUPONT 114.0 DGO Chan 87

R-233-053°

ELEV 660

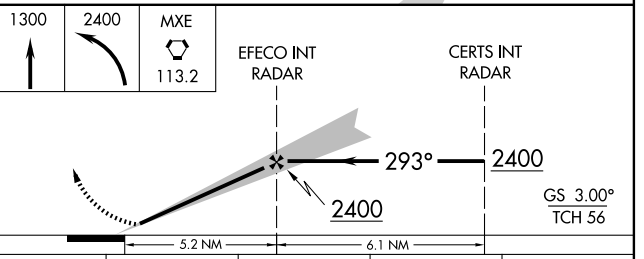
0.4% UP

5400 x 100

TDZE 660

293° 5.2 NM from FAF

RADAR REQUIRED



CATEGORY	A	B	C	D
S-ILS 29	919-1 259 (300-1)			
S-LOC 29	1040-1 380 (400-1)			1040-1½ 380 (400-1½)
CIRCLING	1120-1 460 (500-1)	1220-1½ 560 (600-1½)		1240-2 580 (600-2)

HIRL Rwy 11-29 0

REIL Rwy 11-29 0

FAF to MAP 5.2 NM

Knots	60	90	120	150	180
Min:Sec	5:12	3:28	2:36	2:05	1:44