

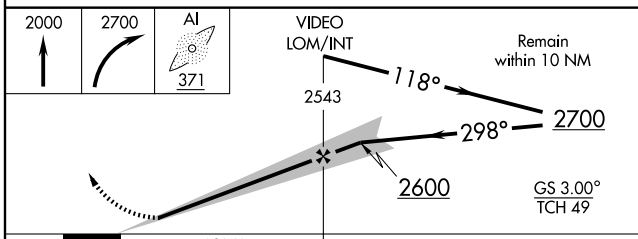
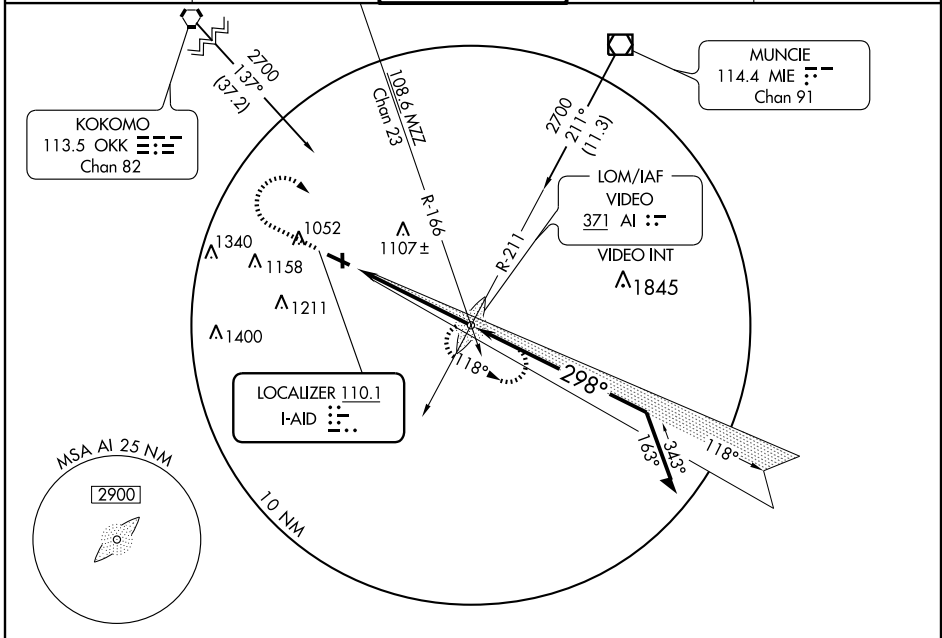
ILS or LOC RWY 30

ANDERSON MUNI-DARLINGTON FIELD (AID)

LOC I-AID 110.1	APP CRS 298°	Rwy ldg 5312 TDZE 919 Apt Elev 919
---------------------------	------------------------	--

<p>⚠ When control tower closed, except for operators with approved weather reporting service, use Indianapolis altimeter setting. ADF Required.</p>	<p>MALSF </p>	<p>MISSED APPROACH: Climb to 2000, then climbing right turn to 2700 direct VIDEO LOM/Int and hold.</p>
--	--------------------------	---

AWOS-3 118.375	INDIANPOLIS CENTER 120.65 317.8	ANDERSON TOWER* 126.0 (CTAF) 0	GND CON 121.6	UNICOM 122.95
--------------------------	---	--	-------------------------	-------------------------



ELEV 919	Rwy 30 ldg 5312'
	Rwy 18 ldg 3099'
	Rwy 36 ldg 3102'

REIL Rwy 12	
MIRL Rwys 12-30 and 18-36	
FAF to MAP 4.9 NM	
Knots	60 90 120 150 180
Min:Sec	4:54 3:16 2:27 1:58 1:38

CATEGORY	A	B	C	D
S-ILS 30	1162-1 250 (300-1)			
S-LOC 30	1360-1	441 (500-1)	1360-1½ 441 (500-1½)	1360-1½ 441 (500-1½)
CIRCLING	1360-1 441 (500-1)	1400-1 481 (500-1)	1400-1½ 481 (500-1½)	1500-2 581 (600-2)
INDIANAPOLIS ALTIMETER SETTING MINIMUMS				
S-ILS 30	1270-1¼ 358 (400-1¼)			
S-LOC 30	1460-1¼	541 (600-1¼)	1460-1½ 541 (600-1½)	1460-1¾ 541 (600-1¾)
CIRCLING	1460-1 541 (600-1)	1500-1 581 (600-1)	1500-1½ 581 (600-1½)	1620-2¼ 701 (800-2¼)

EC-2, 22 OCT 2009 to 19 NOV 2009

EC-2, 22 OCT 2009 to 19 NOV 2009