

RNAV (GPS) RWY 34R

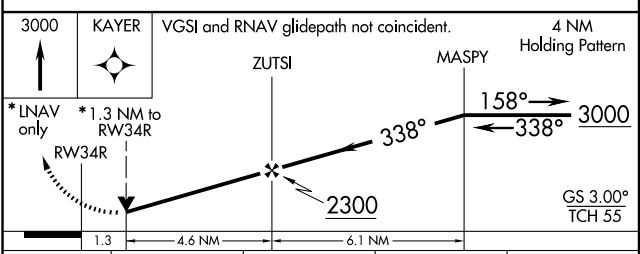
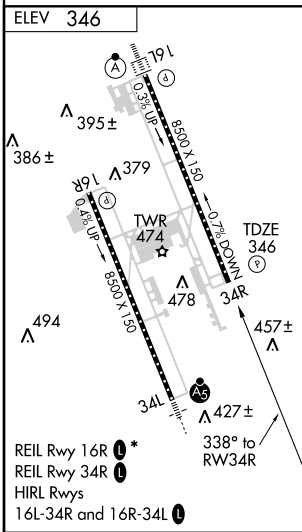
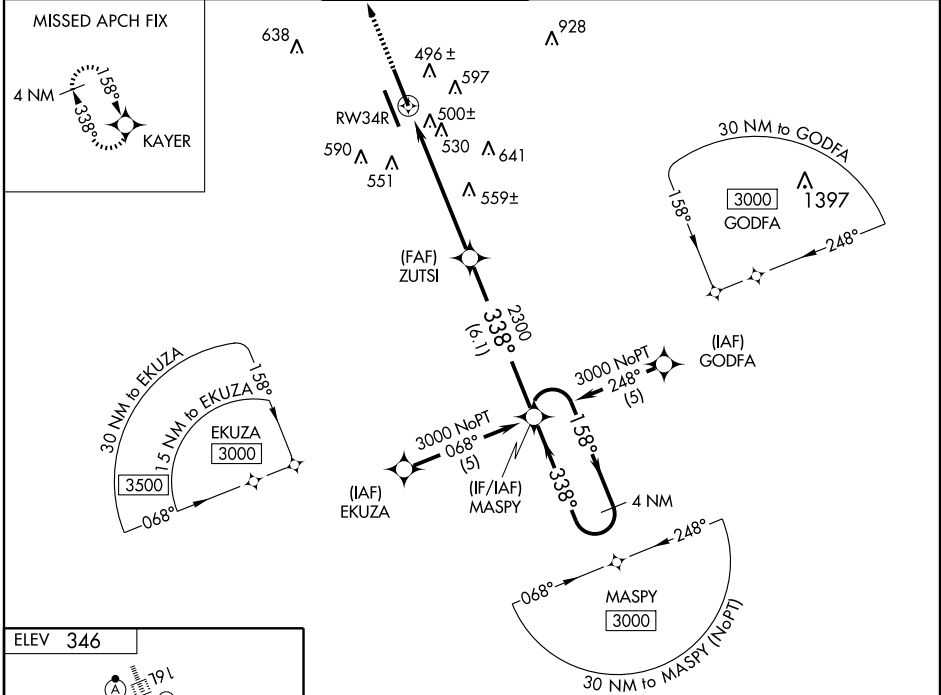
JACKSON-EVERS INTL (JAN)

WAAS CH 45811 W34B	APP CRS 338°	Rwy Idg TDZE Apt Elev	8500 346 346
--	------------------------	-----------------------------	---

⚠ For uncorrected Baro-VNAV systems, LNAV/VNAV NA below -15°C (5°F) or above 48°C (118°F). DME/DME RNP-0.3 NA. Visibility reduction by helicopters NA. When local altimeter setting not received, use Hawkins Field altimeter setting and increase all DA 19 feet and all MDA 20 feet, increase LPV all Cats visibility to 1½ mile. VDP and ASR Baro-VNAV NA when using Hawkins Field altimeter setting.

MISSED APPROACH: Climb to 3000 direct KAYER and hold.

ATIS 121.05	JACKSON APP CON * 123.9 317.7	JACKSON TOWER * 120.9 (CTAF) 0 352.0	GND CON 121.7 348.6	120.7 0*	UNICOM 122.95
-----------------------	---	--	-------------------------------	-----------------	-------------------------



CATEGORY	A	B	C	D
LPV DA	738/60 392 (400-1¼)			
LNAV/VNAV DA	846-1¾ 500 (500-1¾)			
LNAV MDA	820/50	474 (500-1)	820/60 474 (500-1¼)	820-1½ 474 (500-1½)
CIRCLING	840-1 494 (500-1)	880-1 534 (600-1)	880-1½ 534 (600-1½)	900-2 554 (600-2)

SC-4, 22 OCT 2009 to 19 NOV 2009

SC-4, 22 OCT 2009 to 19 NOV 2009