

ILS RWY 16L

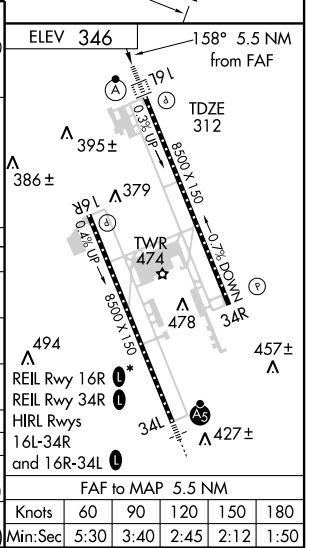
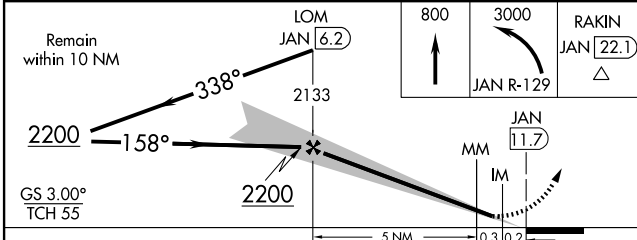
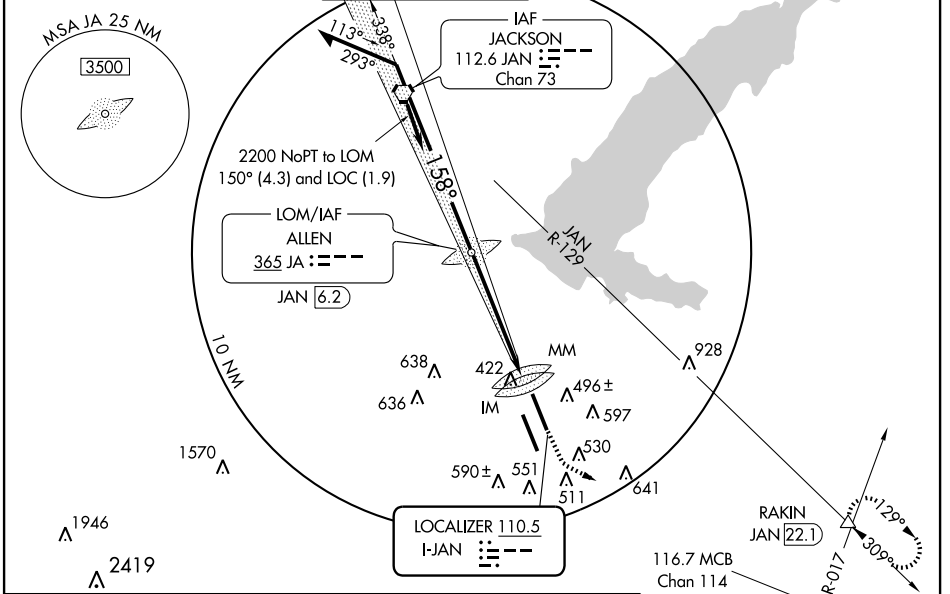
JACKSON-EVERS INTL (JAN)

LOC I-JAN 110.5	APP CRS 158°	Rwy Idg 8500
		TDZE 312
		Apt Elev 346

ASR Cat E circling not authorized SW of Rwy 16R-34L. Cat E procedure turn not authorized - RADAR required. Cat E S-ILS 16L DH increased 50 feet and visibility increased to RVR 4000 for inoperative MM. When control tower closed inoperative table does not apply. For inoperative ALSF-2, increase S-ILS 16L Cat E visibility to RVR 4000.

ALSF-2 MISSED APPROACH: Climb to 800, then climbing left turn to 3000 via JAN R-129 and RAKIN Int/22.1 DME and hold.

ATIS 121.05	JACKSON APP CON* 123.9 317.7	JACKSON TOWER* 120.9 (CTAF) 0 352.0	GND CON 121.7 348.6	120.7 0*	UNICOM 122.95
-----------------------	--	---	-------------------------------	-----------------	-------------------------



CATEGORY	A	B	C	D	E
S-ILS 16L	512/18 200 (200-½)			512/24 200 (200-½)	
S-LOC 16L	720/24 408 (400-½)		720/40 408 (400-¾)		
CIRCLING	840-1	880-1	880-1½	900-2	960-2¼
	494 (500-1)	534 (600-1)	534 (600-1½)	554 (600-2)	614 (700-2¼)
CONTROL TOWER CLOSED					
S-ILS 16L	512-¾ 200 (200-¾)				
S-LOC 16L	720-1 408 (400-1)		720-1¼ 408 (400-1¼)		720-1½ 408 (400-1½)
CIRCLING	840-1	880-1	880-1½	900-2	960-2¼
	494 (500-1)	534 (600-1)	534 (600-1½)	554 (600-2)	614 (700-2¼)

SC-4, 22 OCT 2009 to 19 NOV 2009

SC-4, 22 OCT 2009 to 19 NOV 2009