

VOR/DME BWS 109.6 Chan 33	APP CRS 035°	Rwy Idg 7006 TDZE 4167 Apt Elev 4200
--	------------------------	---

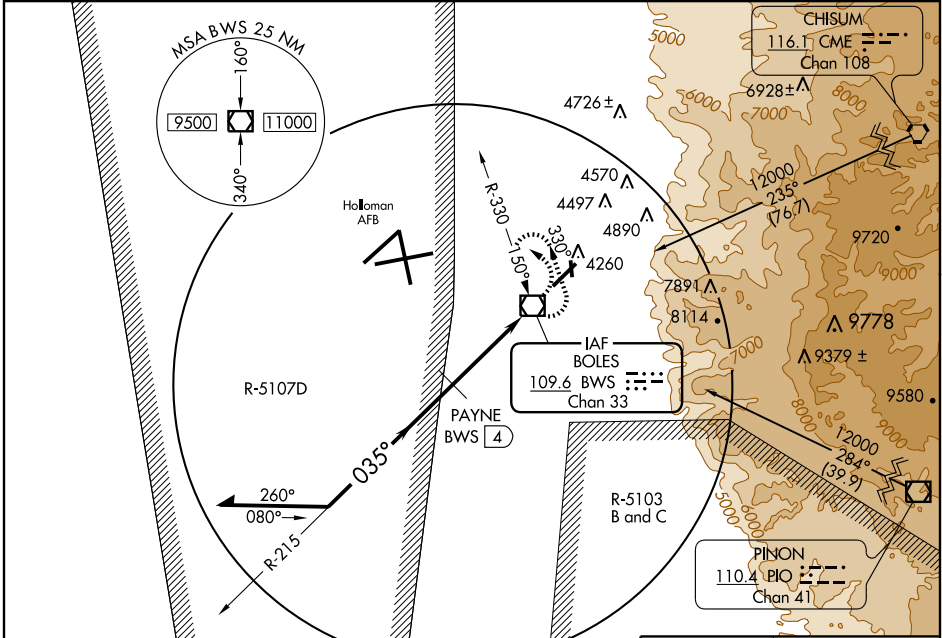
VOR/DME RWY 3

ALAMOGORDO-WHITE SANDS RGNL (A.I.M)

⚠ All civil aircraft require ATC clearance prior to entering Restricted Area 5107D.
⚠NA Circling NA southeast of Rwy 3-21.
 Arrivals over BOLES VOR/DME above 12000 descend in the holding pattern to 12000 before commencing approach.
 Not authorized when Holloman Approach Control closed.

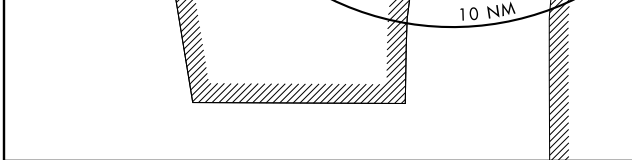
MISSED APPROACH: Climbing left turn to 7000 via BWS R-330 then climbing left turn to 10000 direct BWS VOR/DME and hold.

AWOS-3 127.825	HOLLOMAN APP CON * 120.6 269.225	UNICOM 122.8 (CTAF)
--------------------------	--	-------------------------------

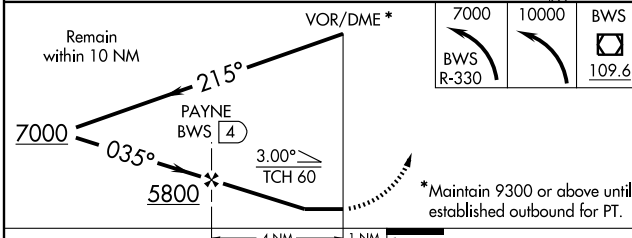
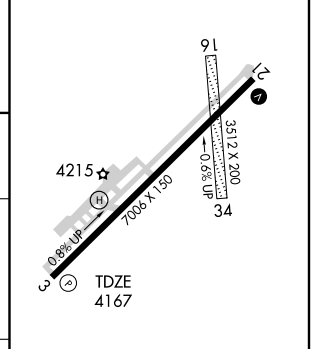


SW-1, 22 OCT 2009 to 19 NOV 2009

SW-1, 22 OCT 2009 to 19 NOV 2009



ELEV 4200 **D**



CATEGORY	A	B	C	D
S-3	4460-1¼ 293 (300-1¼)			
CIRCLING	4660-1¼ 460 (500-1¼)	4720-1¼ 520 (600-1¼)	4720-1½ 520 (600-1½)	4760-2 560 (600-2)

REIL Rws 3 and 21
 MRL Rwy 3-21 **D**