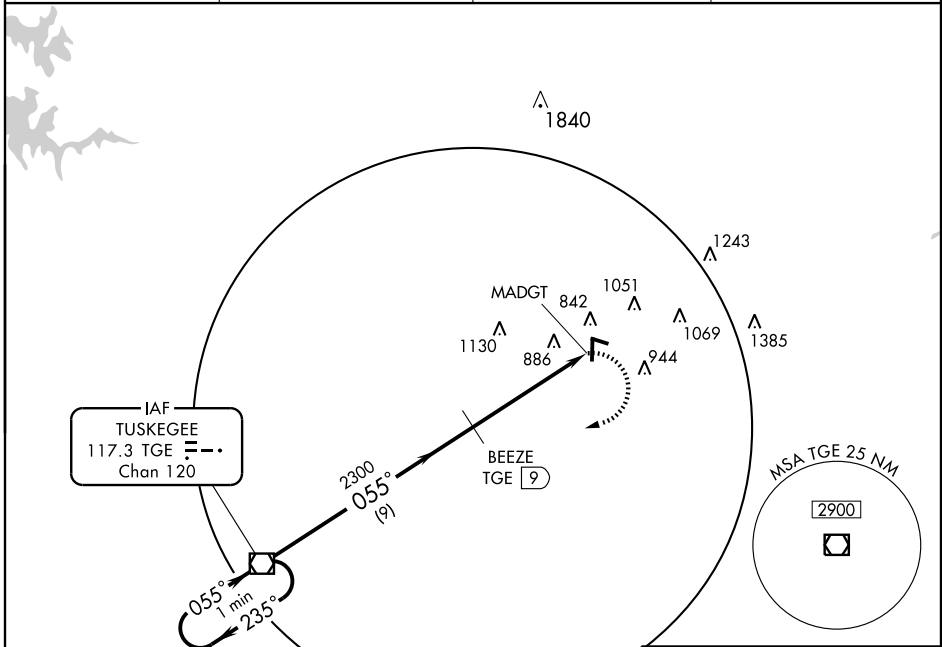


VOR/DME TGE 117.3 Chan 120	APP CRS 055°	Rwy Idg TDZE Apt Elev	N/A N/A 777
--	------------------------	-----------------------------	--

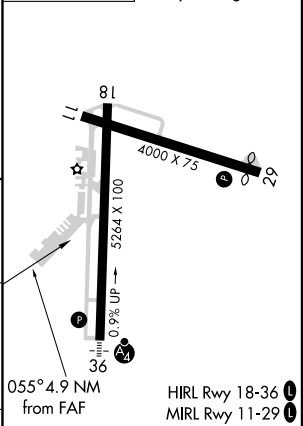
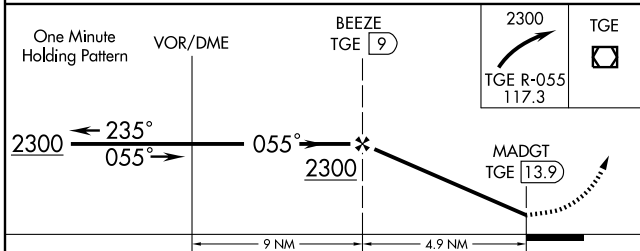
VOR/DME-A
AUBURN-OPELIKA ROBERT G. PITTS (AUO)

		MISSED APPROACH: Climbing right turn to 2300 via TGE R-055 to TGE VOR/DME and hold.	
AWOS-3 132.575	ATLANTA APP CON * 125.5 323.1	ATLANTA CLNC DEL 118.7	UNICOM 123.0 (CTAF) 0



NoPT for arrivals on TGE VOR/DME
Airway radials 137° clockwise 317.

ELEV 777 Rwy 29 Idg 3703'



CATEGORY	A	B	C	D	Knots	60	90	120	150	180
CIRCLING	1220-1 443 (500-1)	1240-1 463 (500-1)	1360-1½ 583 (600-1½)	1360-2 583 (600-2)	Min:Sec					