

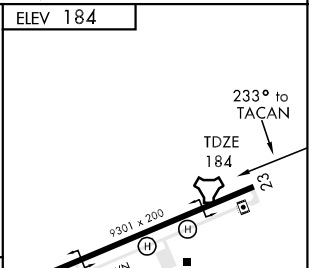
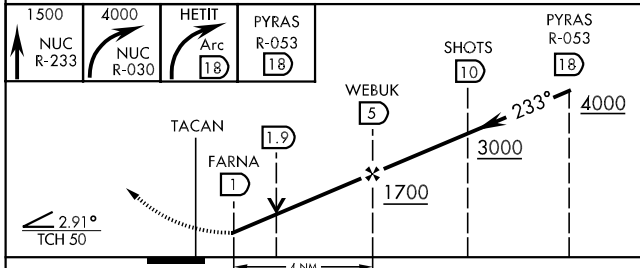
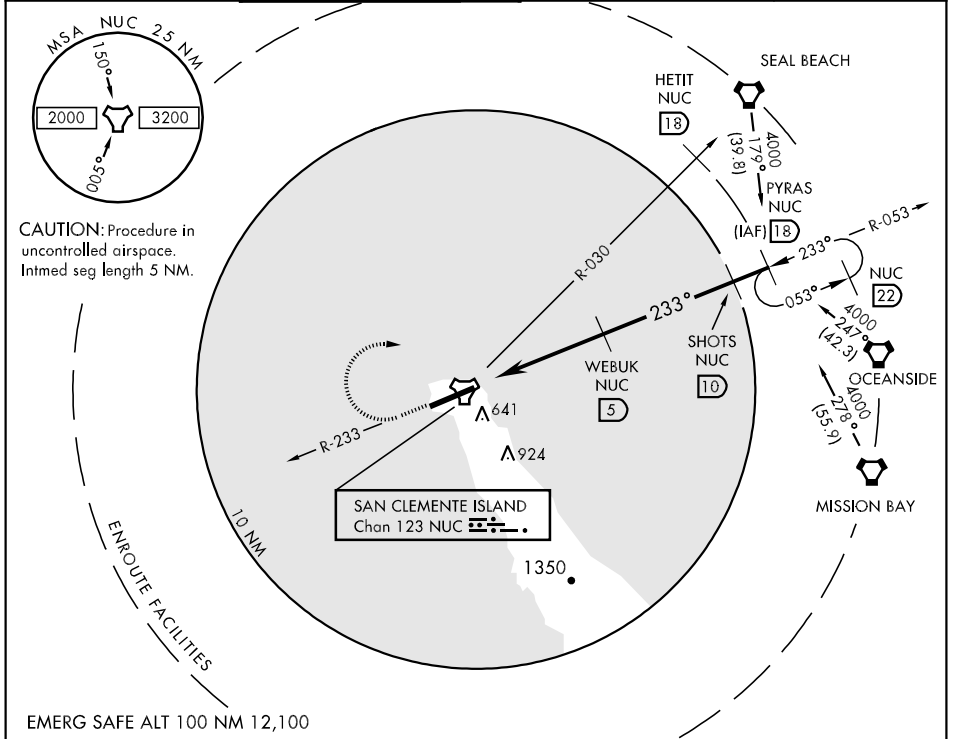
TACAN NUC Chan 123	APCH CRS 233°	Rwy Idg TDZE Arpt Elev 9301 184 184
------------------------------	-------------------------	---

AL-5126 [USN]

*** Circling not authorized S of Rwy 5-23.**

MISSED APPROACH: Climb to 1500 via NUC TACAN R-233 then climbing right turn to 4000 via NUC R-030 to HETIT. Then arc NE of NUC TACAN via the 18 DME arc to PYRAS and hold.

ATIS ★ 268.6	SAN CLEMENTE ISLAND TOWER ★ 126.75 278.8	GND CON 0 119.55 251.05	ASR/PAR
------------------------	--	-----------------------------------	---------



CATEGORY	A	B	C	D
S-23	760-1	576 (600-1)	760-1½ 576 (600-1½)	760-1¾ 576 (600-1¾)
CIRCLING *	760-1	576 (600-1)	760-1½ 576 (600-1½)	760-2 576 (600-2)
S-PAR 23	434-1 250 (300-1) GS 3.0°			

SW-3, 22 OCT 2009 to 19 NOV 2009

SW-3, 22 OCT 2009 to 19 NOV 2009