

SAN CLEMENTE ISLAND, CALIFORNIA

RNAV (GPS) RWY 23

(FEDERICK SHERMAN FLD)

SAN CLEMENTE ISLAND NALF (KNUC)

APCH CRS **233°**
 Rwy Idg **9301**
 TDZE **184**
 Arpt Elev **184**

AL-5126 [USN]

▼ * Circling not authorized S of Rwy 5 - 23.
 DME/DME RNP-0.3 NA
 Baro VNAV NA below -1.5°C (4°F) or above 41°C (106°F)

MISSED APPROACH: Climb to 1500, then climbing right turn to 3000 direct JUROR WP and hold.

ATIS ★
268.6

SAN CLEMENTE ISLAND TOWER ★
126.75 278.8

GND CON
0 119.55 251.05

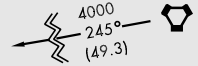
ASR/PAR

CAUTION: Procedure in uncontrolled airspace

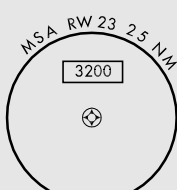
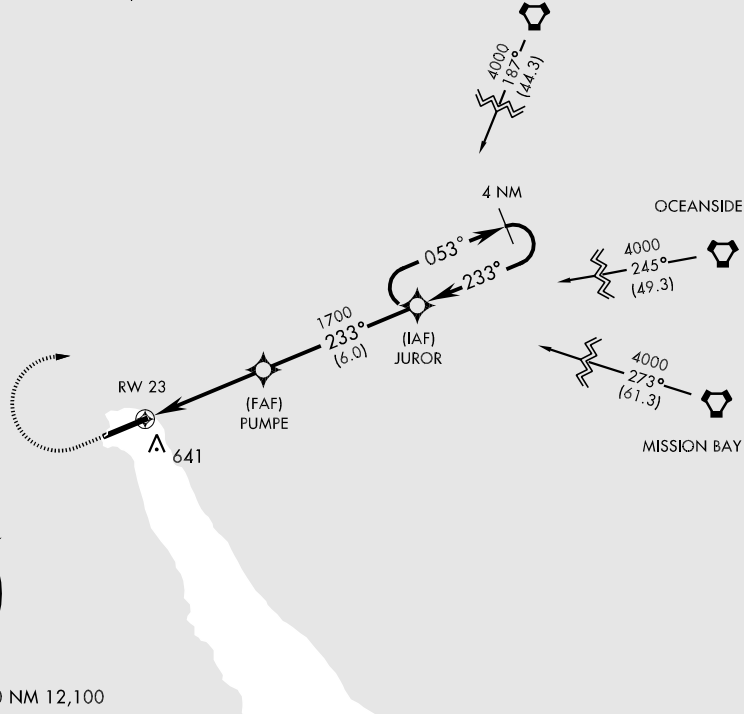
SEAL BEACH



OCEANSIDE



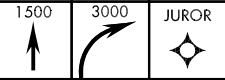
MISSION BAY



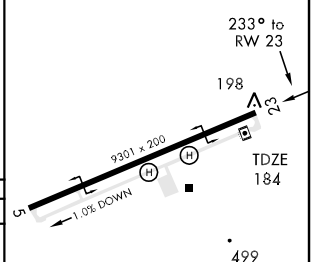
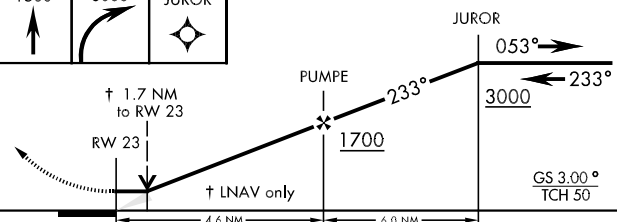
EMERG SAFE ALT 100 NM 12,100

SW-3, 22 OCT 2009 to 19 NOV 2009

SW-3, 22 OCT 2009 to 19 NOV 2009



ELEV 184



CATEGORY	A	B	C	D
LNAV/VNAV DA	740-2		556	(600-2)
LNAV MDA	760-1	576 (600-1)	760-1½ 576 (600-1½)	760-1¾ 576 (600-1¾)
CIRCLING *	760-2		576	(600-2)
S-PAR 23	434-1		250	(300-1) GS 3.0°

HIRL Rwy 5-23 **0**
 REIL Rwy 5-23 **0**

SAN CLEMENTE ISLAND, CALIFORNIA

33° 01' N - 118° 35' W

SAN CLEMENTE ISLAND NALF (KNUC)
 (FEDERICK SHERMAN FLD)

RNAV (GPS) RWY 23

09071