

TACAN Chan 123	APCH CRS 233°	Rwy Idg TDZE Arpt Elev 9301 184 184
--------------------------	-------------------------	---

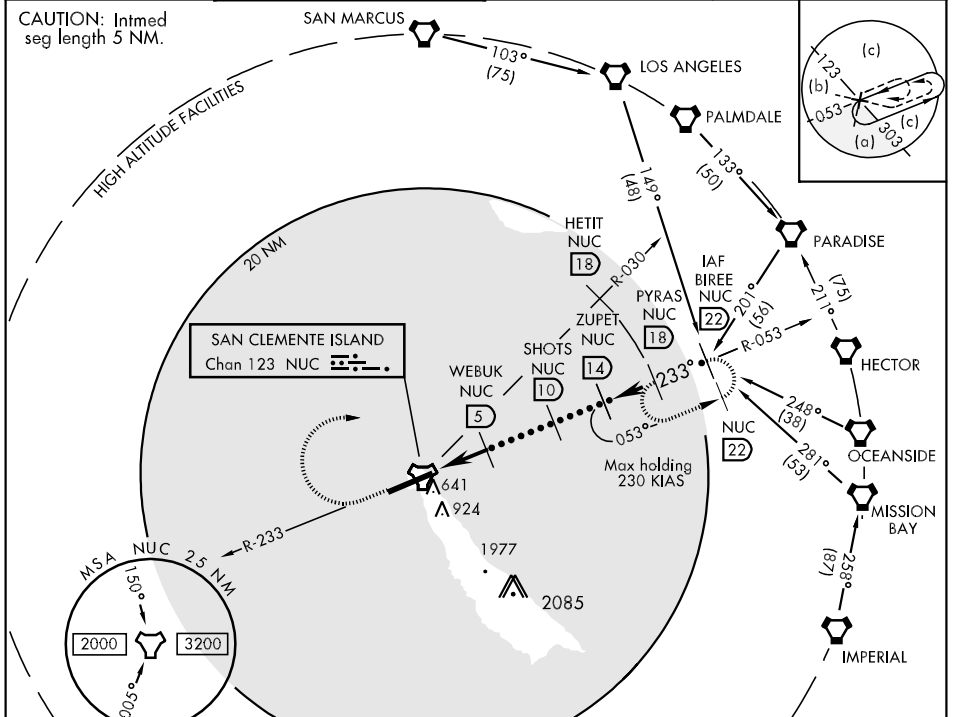
JAL-5126 [USN]

SAN CLEMENTE ISLAND NALF
(FREDERICK SHERMAN FLD) (KNUC)

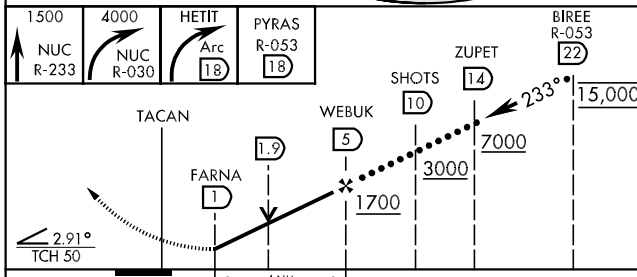
CAUTION: Procedure in uncontrolled airspace.

MISSED APPROACH: Climb to 1500 via NUC TACAN R-233 then climbing right turn to 4000 via NUC R-030 to HETIT. Then arc NE of the NUC TACAN via the 18 DME arc to PYRAS and hold.

ATIS ★ 268.6	SAN CLEMENTE ISLAND TOWER ★ 126.75 278.8	GND CON 119.55 251.05	ASR/PAR
------------------------	--	---------------------------------	---------

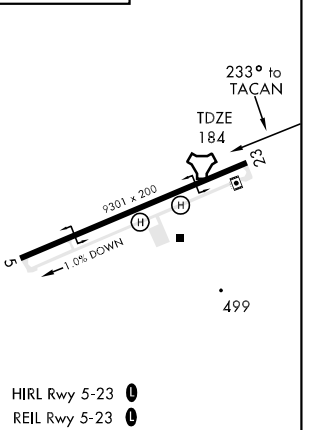


EMERG SAFE ALT 100 NM 12,100



CATEGORY	C	D	E
S-23	760-1½ 576 (600-1½)	760-1¼ 576 (600-1¼)	760-2 576 (600-2)
CIRCLING *	760-1½ 576 (600-1½)	760-2	576 (600-2)
S-PAR 23	434-1	250 (300-1)	GS 3.0°

ELEV 184



SW-3, 22 OCT 2009 to 19 NOV 2009

SW-3, 22 OCT 2009 to 19 NOV 2009