

APP CRS	Rwy Idg	8223
053°	TDZE	1199
	Apt Elev	1199

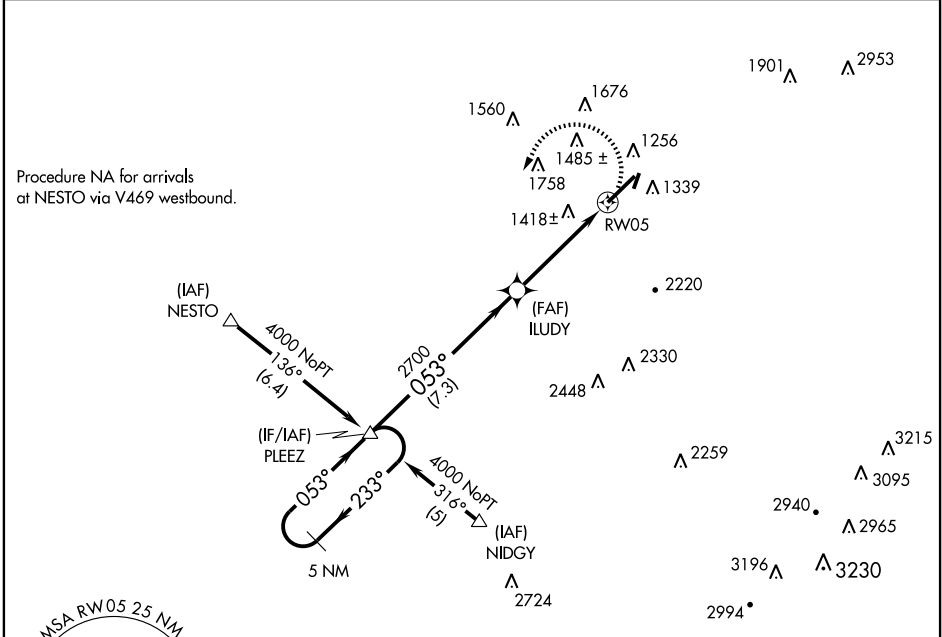
RNAV (GPS) RWY 5

LATROBE/ARNOLD PALMER RGNL (L.B.E)

▼ DME/DME RNP-0.3 NA. Circling to Rwy 3 NA at night. Circling NA SE of Rwy 3-21. If local altimeter setting not received, use Allegheny County altimeter setting and increase all MDAs 80 feet. Visibility reduction by helicopters NA.

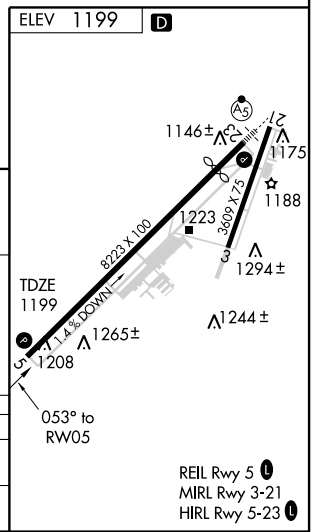
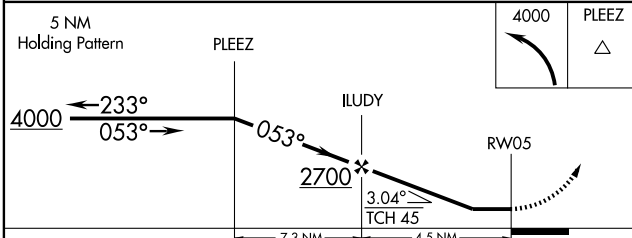
▲ MISSED APPROACH: Climbing left turn to 4000 direct PLEEZ and hold.

ATIS 118.375	CLEVELAND CENTER 124.4 327.1	PALMER TOWER ★ 125.0 (CTAF) 0	GND CON 121.8
------------------------	--	--	-------------------------



NE-4, 22 OCT 2009 to 19 NOV 2009

NE-4, 22 OCT 2009 to 19 NOV 2009



CATEGORY	A	B	C	D
LNNAV MDA	1680 - 1	481 (500-1)	1680 - 1 1/4 481 (500-1 1/4)	1680 - 1 1/2 481 (500-1 1/2)
CIRCLING	1720 - 1	521 (600-1)	1780 - 1 1/2 581 (600-1 1/2)	1800 - 2 601 (700-2)

REIL Rwy 5 **0**
MIRL Rwy 3-21
HIRL Rwy 5-23 **0**