


RNAV (GPS) RWY 22

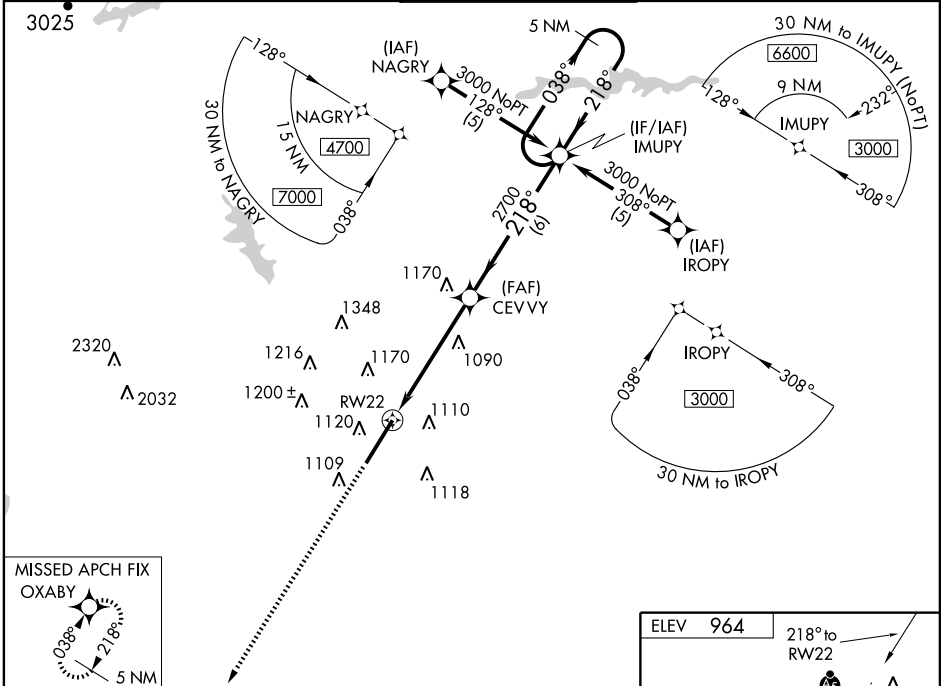
GREER/ GREENVILLE-SPARTANBURG INTL-ROGER MILLIKEN (GSP)

WAAS CH 99602 W22A	APP CRS 218°	Rwy Idg 11000 TDZE 964 Apt Elev 964
--	------------------------	--

▼ If local altimeter setting not received, use Greenville Downtown altimeter setting and increase all DAs/MDAs 40 feet. VDP and Baro-VNAV NA when using Greenville Downtown altimeter setting. For uncompensated Baro-VNAV systems, LNAV/VNAV NA below -16° C (4° F) or above 47° C (116° F). DME/DME RNP-0.3 NA. For inoperative MALS, increase LNAV Cat. D visibility to RVR 6000.

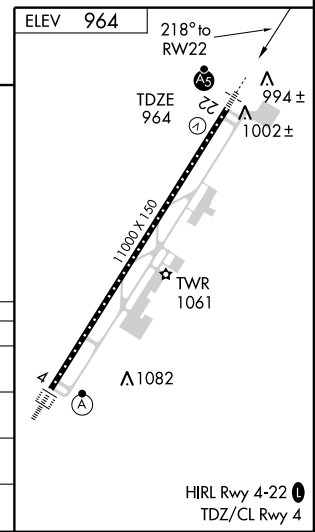
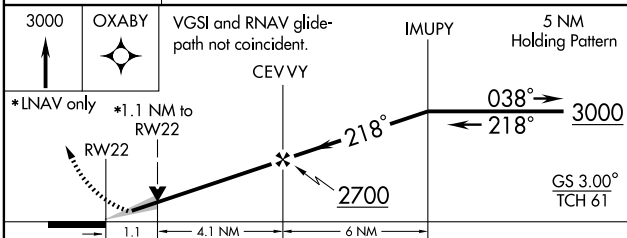
MALS  MISSED APPROACH: Climb to 3000 direct OXABY and hold.

ATIS 134.25	GREER APP CON* 118.8 385.4	GREER TOWER* 120.1(CTAF) 257.8	GND CON 121.9	UNICOM 122.95
-----------------------	--------------------------------------	--	-------------------------	-------------------------



SE-2, 22 OCT 2009 to 19 NOV 2009

SE-2, 22 OCT 2009 to 19 NOV 2009



CATEGORY	A	B	C	D
LPV DA	1164/24		200 (200-½)	
LNAV/VNAV DA	1367/40		403 (500-¾)	
LNAV MDA	1360/24		396 (400-½)	
CIRCLING	1420-1	456 (500-1)	1420-1½	1520-2
			456 (500-1½)	556 (600-2)

RNAV (GPS) RWY 22