

GREER, SOUTH CAROLINA

AL-5124 (FAA)

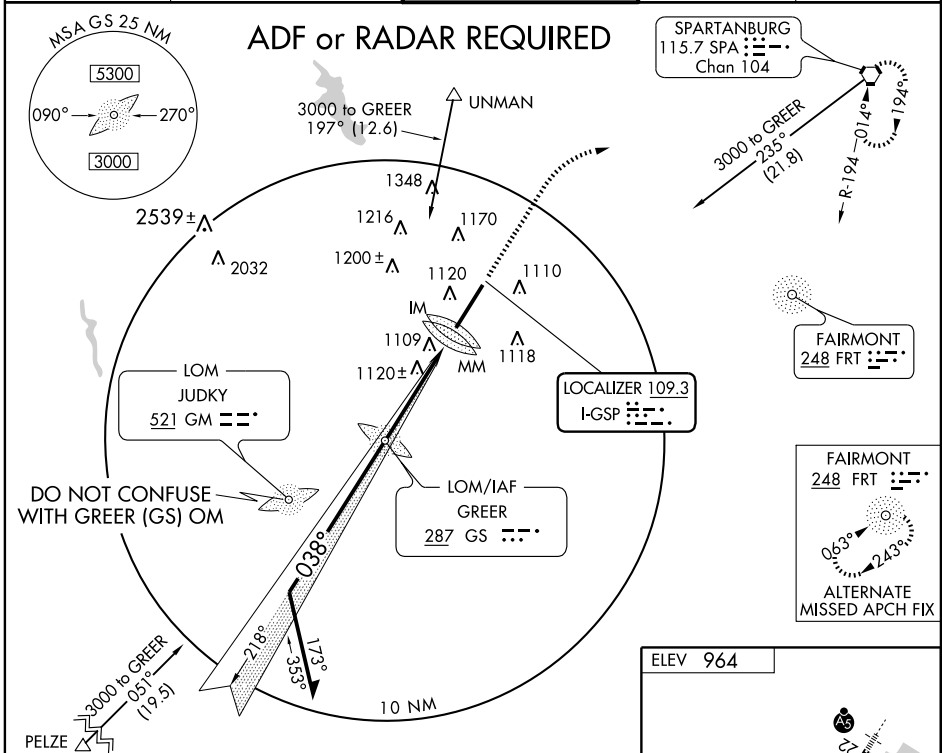
LOC I-GSP <b>109.3</b>	APP CRS <b>038°</b>	Rwy Idg TDZE Apt Elev	<b>11000</b> <b>947</b> <b>964</b>
---------------------------	------------------------	-----------------------------	--

GREER/  
GREENVILLE-SPARTANBURG INTL-ROGER MILLIKEN (GSP)

**ILS RWY 4 (CAT III)**

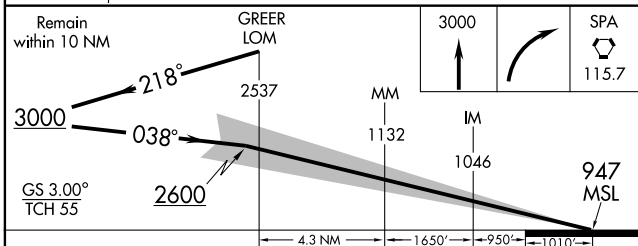
ASR	ALSIF-2	MISSED APPROACH: Climb to 3000 then right turn direct SPA VORTAC and hold.
-----	---------	--

ATIS <b>134.25</b>	GREER APP CON* <b>118.8 385.4</b>	GREER TOWER* <b>120.1(CTAF) 257.8</b>	GND CON <b>121.9</b>	UNICOM <b>122.95</b>
-----------------------	--------------------------------------	--	-------------------------	-------------------------

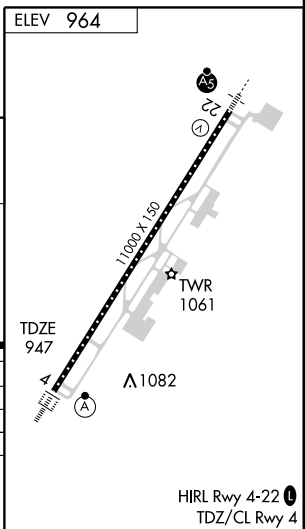


SE-2, 22 OCT 2009 to 19 NOV 2009

SE-2, 22 OCT 2009 to 19 NOV 2009



CATEGORY	A	B	C	D
S-ILS 4		Cat IIIa	RVR 07	
S-ILS 4		Cat IIIb	RVR 06	
S-ILS 4		Cat IIIc	NA	



**CATEGORY III ILS - SPECIAL AIRCREW & AIRCRAFT CERTIFICATION REQUIRED**

GREER, SOUTH CAROLINA  
Amdt 22 08325

GREER/ GREENVILLE-SPARTANBURG INTL-ROGER MILLIKEN (GSP)  
34° 54' N-82° 13' W

**ILS RWY 4 (CAT III)**