

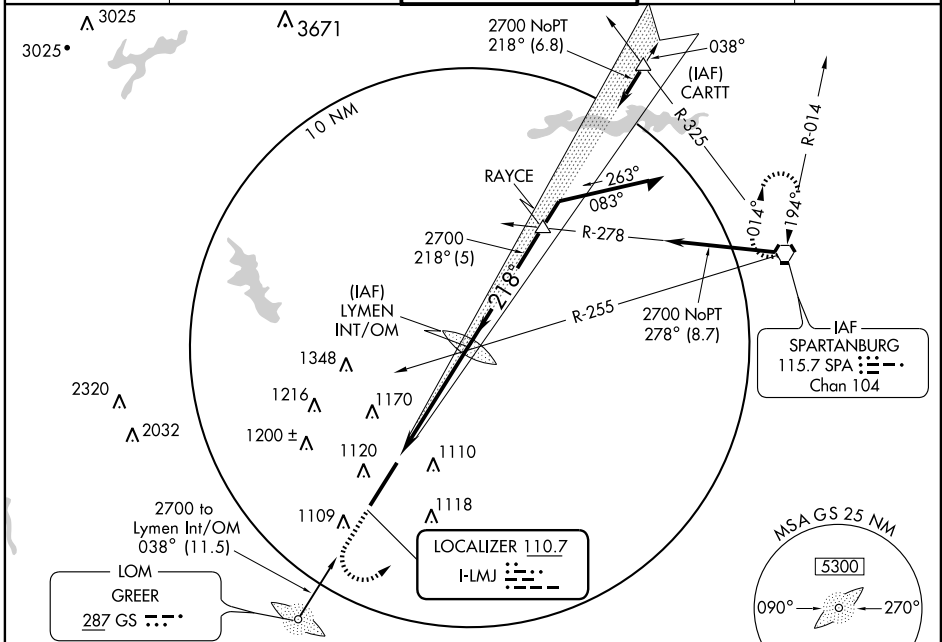
ILS RWY 22

GREER/ GREENVILLE-SPARTANBURG INTL-ROGER MILLIKEN (GSP)

LOC I-LMJ 110.7	APP CRS 218°	Rwy Idg 11000
		TDZE 964
		Apt Elev 964

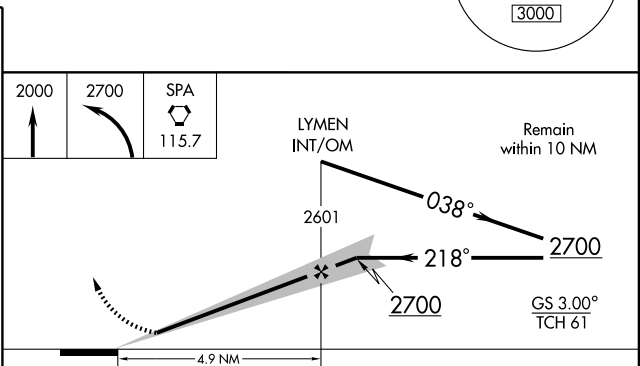
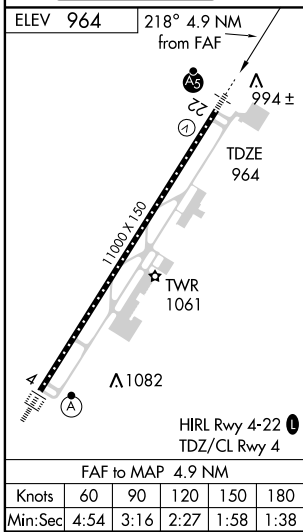
ASR	MALSR	MISSED APPROACH: Climb to 2000 then climbing left turn to 2700 direct SPA VORTAC and hold.
-----	-------	--

ATIS 134.25	GREER APP CON* 118.8 385.4	GREER TOWER* 120.1 (CTAF) 257.8	GND CON 121.9	UNICOM 122.95
-----------------------	--------------------------------------	---	-------------------------	-------------------------



SE-2, 22 OCT 2009 to 19 NOV 2009

SE-2, 22 OCT 2009 to 19 NOV 2009



CATEGORY	A	B	C	D
S-ILS 22	1164/24 200 (200-½)			
S-LOC 22	1340/24 376 (400-½)			1340/40 376 (400-¾)
CIRCLING	1420-1 456 (500-1)		1420-1½ 1520-2 456 (500-1½) 556 (600-2)	

ILS RWY 22