

ESCANABA, MICHIGAN

AL-5123 (FAA)

VOR RWY 9

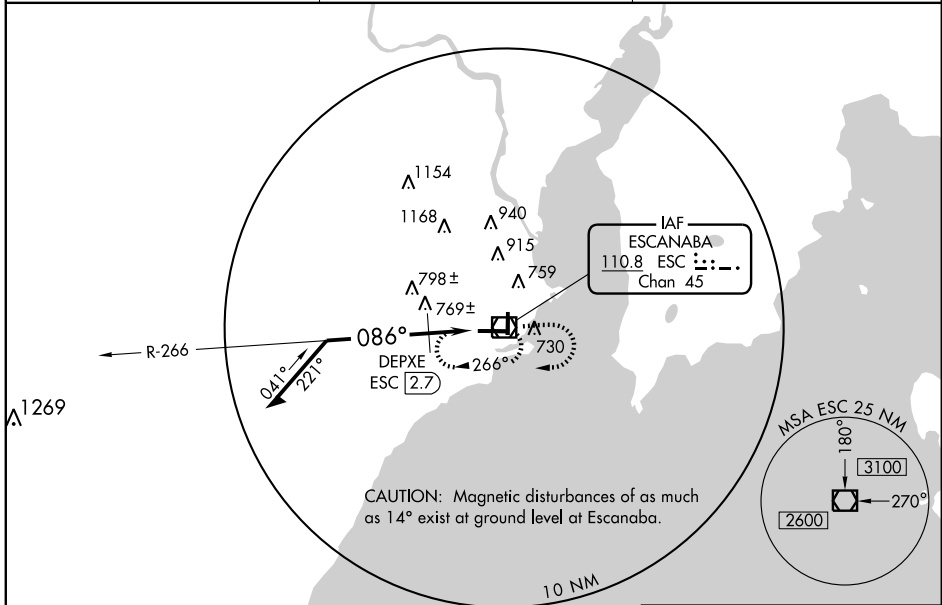
ESCANABA / DELTA COUNTY (ESC)

VOR/DME ESC 110.8 Chan 45	APP CRS 086°	Rwy ldg TDZE Apt Elev 6498 609 609
---	------------------------	--

⚠ When local altimeter setting not received, use Sawyer Intl altimeter setting and increase all MDA 180 feet, increase S-9 Cat B visibility ¼ mile, Cats C and D visibility ¾ mile, Circling Cat B visibility ¼ mile, Cat C visibility ¾ mile, Cat D visibility ½ mile, increase DEPX fix minimums S-9 Cats C and D visibility ½ mile, Circling Cat C visibility ¾ mile, Cat D visibility ½ mile. VDP NA when using Sawyer Intl altimeter setting.

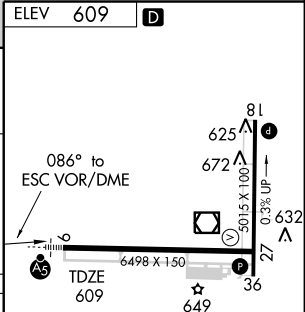
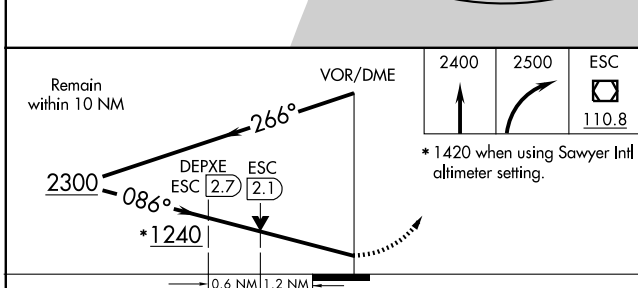
MALS
MISSED APPROACH:
Climb to 2400 then climbing right turn to 2500 direct ESC VOR/DME and hold.

AWOS-3 121.425	MINNEAPOLIS CENTER 127.65	UNICOM 122.8 (CTAF)
--------------------------	-------------------------------------	-------------------------------



EC-1, 22 OCT 2009 to 19 NOV 2009

EC-1, 22 OCT 2009 to 19 NOV 2009



CATEGORY	A	B	C	D
S-9	1240-½ 631 (700-½)		1240-1¼ 631 (700-1¼)	1240-1½ 631 (700-1½)
CIRCLING	1240-1 631 (700-1)		1240-1¾ 631 (700-1¾)	1280-2¼ 671 (700-2¼)
DEPX FIX MINIMUMS				
S-9	1040 -½ 431 (500-½)		1040-¾ 431 (500-¾)	1040-1 431 (500-1)
CIRCLING	1060 -1 451 (500-1)		1240-1¾ 631 (700-1¾)	1280-2¼ 671 (700-2¼)

HIRL Rwy 9-27
MIRL Rwy 18-36
REIL Rwy 36

ESCANABA, MICHIGAN
Amdt 14 09295

45°43'N - 87°06'W

ESCANABA / DELTA COUNTY (ESC)
VOR RWY 9