

ESCANABA, MICHIGAN

AL-5123 (FAA)

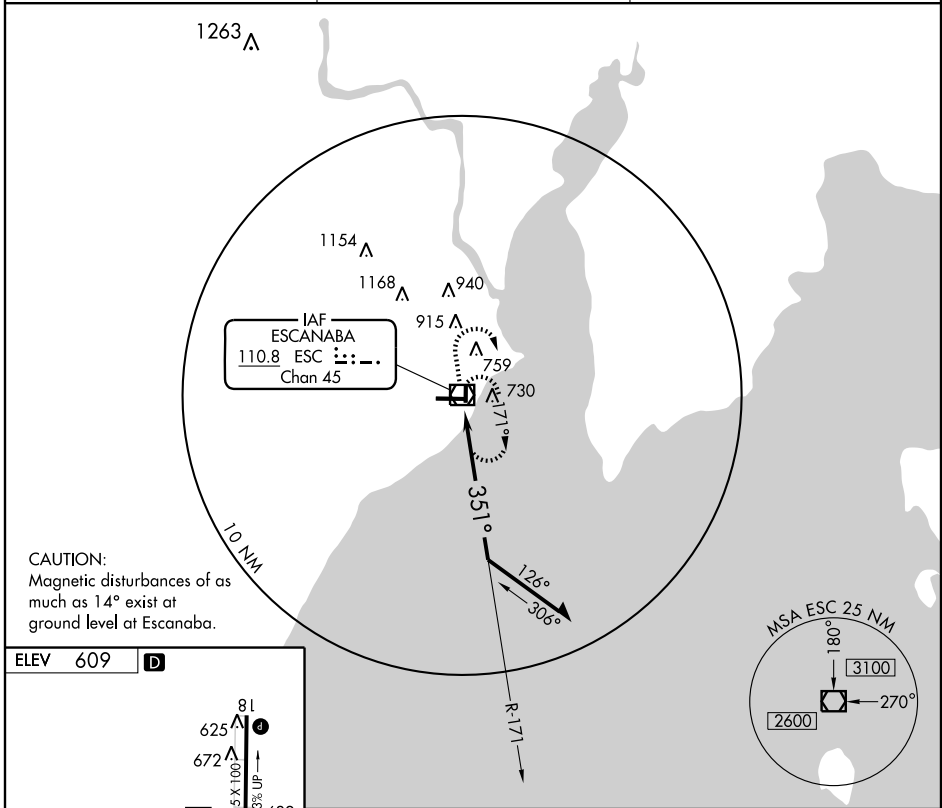
VOR/DME ESC 110.8 Chan 45	APP CRS 351°	Rwy Idg TDZE Apt Elev	5015 601 609
--	------------------------	-----------------------------	---

VOR RWY 36

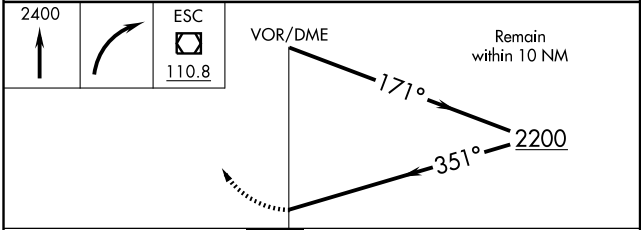
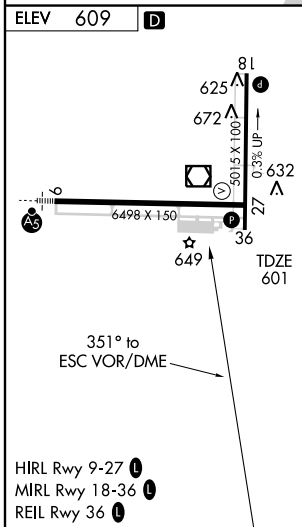
ESCANABA / DELTA COUNTY (ESC)

▲ MISSED APPROACH: Climb to 2400, then right turn direct ESC VOR/DME and hold.

AWOS-3 121.425	MINNEAPOLIS CENTER 127.65	UNICOM 122.8 (CTAF) 0
--------------------------	-------------------------------------	--



CAUTION:
Magnetic disturbances of as much as 14° exist at ground level at Escanaba.



CATEGORY	A	B	C	D
S-36	1080-1 479 (500-1)		1080-1¼ 479 (500-1½)	1080-1½ 479 (500-1½)
CIRCLING	1080-1 471 (500-1)	1100-1 491 (500-1)	1240-1¾ 631 (700-1¾)	1280-2¼ 671 (700-2¼)

ESCANABA, MICHIGAN
Orig-A 09295

45°43'N - 87°06'W

VOR RWY 36

EC-1, 22 OCT 2009 to 19 NOV 2009

EC-1, 22 OCT 2009 to 19 NOV 2009