

ESCANABA, MICHIGAN

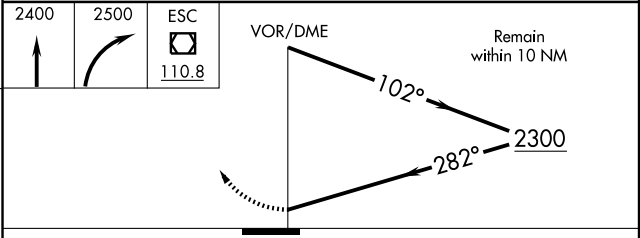
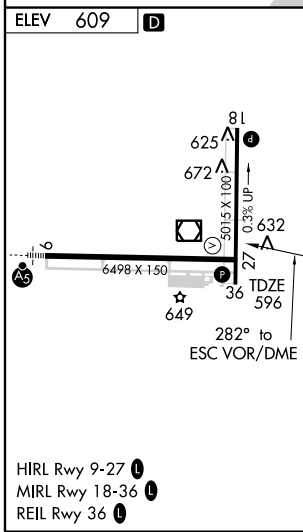
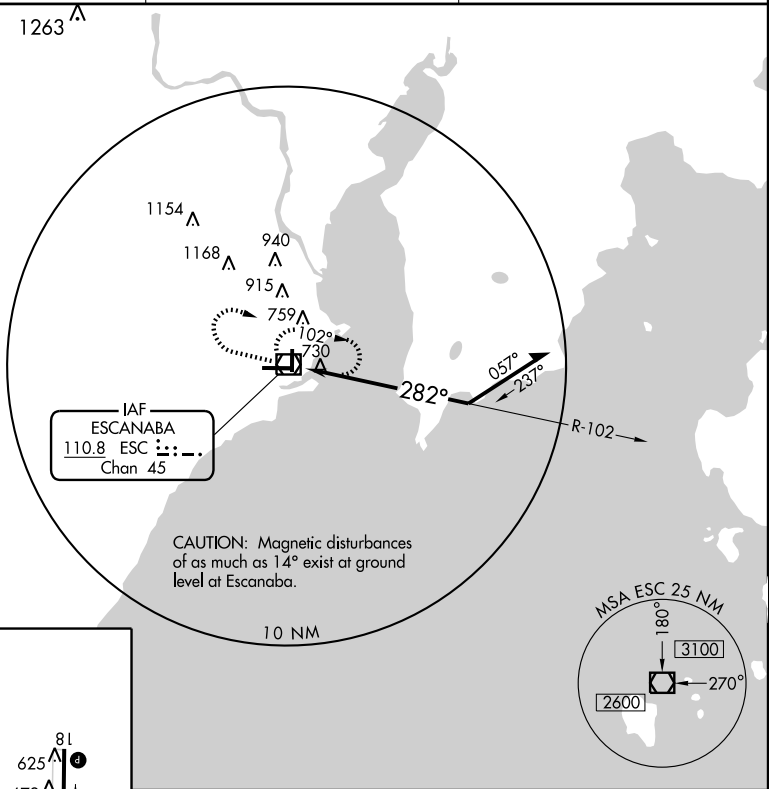
AL-5123 (FAA)

VOR/DME ESC	APP CRS	Rwy ldg	6498
110.8	282°	TDZE	596
Chan 45		Apt Elev	609

VOR RWY 27

ESCANABA / DELTA COUNTY (E)S(C)

<p>▼ Visibility reduction by helicopters NA.</p> <p>▲ When local altimeter setting not received, use Sawyer Intl altimeter setting and increase all MDA 180 feet, increase S-9 Cat C and D visibility ½ mile, Circling Cat C visibility ¾ mile, Cat D visibility ½ mile.</p>	<p>MISSED APPROACH: Climb to 2400 then climbing right turn to 2500 direct ESC VOR/DME and hold.</p>	
<p>AWOS-3 121.425</p>	<p>MINNEAPOLIS CENTER 127.65</p>	<p>UNICOM 122.8 (CTAF) 📻</p>



CATEGORY	A	B	C	D
S-27	1080 -1	484 (500-1)	1080 -1¼ 484 (500-1¼)	1080 -1½ 484 (500-1½)
CIRCLING	1080 -1	471 (500-1)	1240-1¾ 631 (700-1¾)	1280-2¼ 671 (700-2¼)

ESCANABA, MICHIGAN
Amdt 12 09295

45°43'N - 87°06'W

VOR RWY 27

EC-1, 22 OCT 2009 to 19 NOV 2009

EC-1, 22 OCT 2009 to 19 NOV 2009