

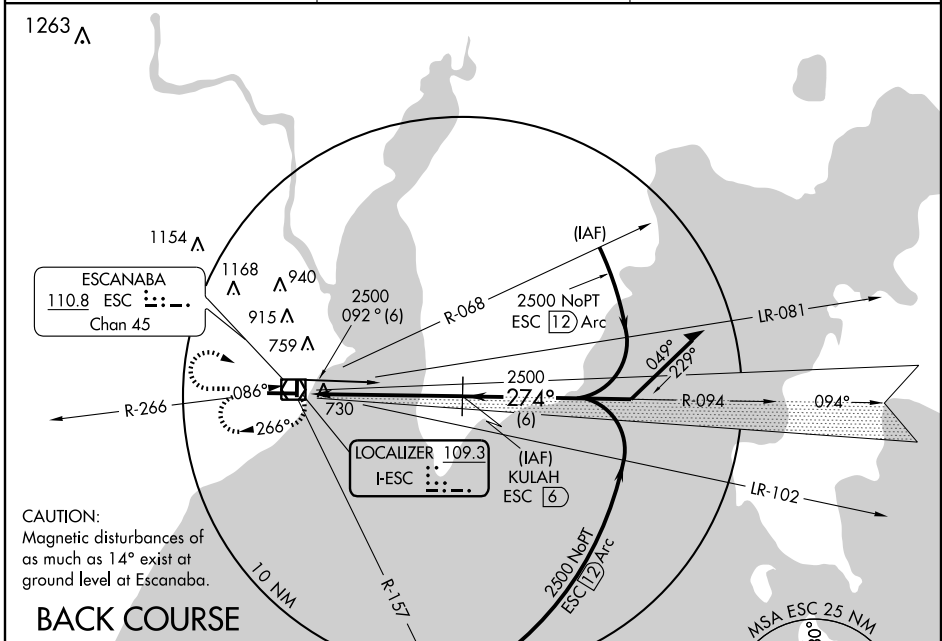
LOC BC RWY 27

ESCANABA / DELTA COUNTY (E/S/C)

LOC I-ESC 109.3	APP CRS 274°	Rwy ldg TDZE Apt Elev	6498 596 609
---------------------------	------------------------	-----------------------------	---

<p>▼ DME from ESC VOR/DME. ▲ Simultaneous reception of I-ESC and ESC DME required.</p>	<p>MISSED APPROACH: Climb to 2500 then right turn direct ESC VOR/DME and hold.</p>
--	--

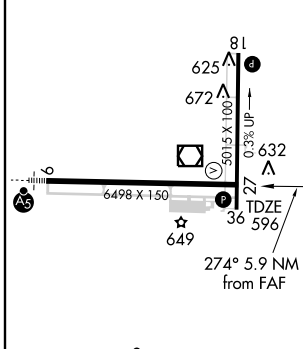
AWOS-3 121.425	MINNEAPOLIS CENTER 127.65	UNICOM 122.8 (CTAF) 0
--------------------------	-------------------------------------	--



EC-1, 22 OCT 2009 to 19 NOV 2009

EC-1, 22 OCT 2009 to 19 NOV 2009

ELEV 609 **D**



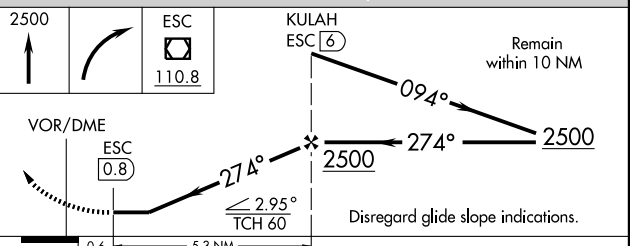
HIRL Rwy 9-27 **1**
MIRL Rwy 18-36 **1**
REIL Rwy 36 **1**

FAF to MAP 5.3 NM

Knots	60	90	120	150	180
Min:Sec	5:18	3:32	2:39	2:07	1:46

ESCANABA, MICHIGAN
Orig-A 09295

DME REQUIRED



CATEGORY	A	B	C	D
S-27	980-1	384 (400-1)		980-1½ 384 (400-1½)
CIRCLING	1060-1 451 (500-1)	1100-1 491 (500-1)	1240-1¾ 631 (700-1¾)	1280-2½ 671 (700-2½)

45°43'N - 87°06'W

LOC BC RWY 27

ESCANABA / DELTA COUNTY (E/S/C)