

RACINE, WISCONSIN

AL-5121 (FAA)

VOR/DME RNAV or GPS RWY 22

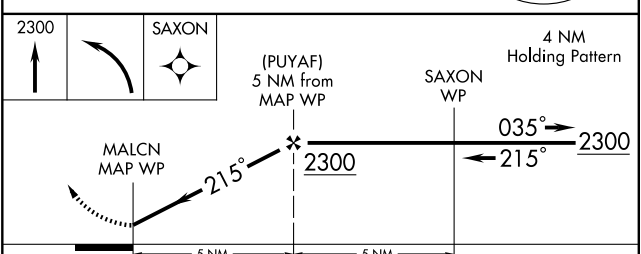
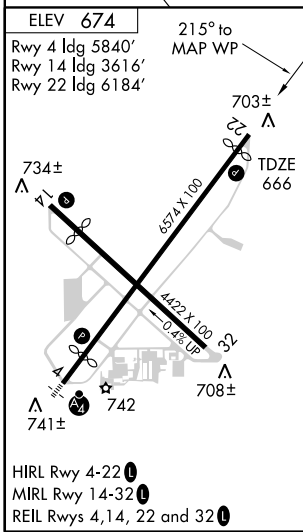
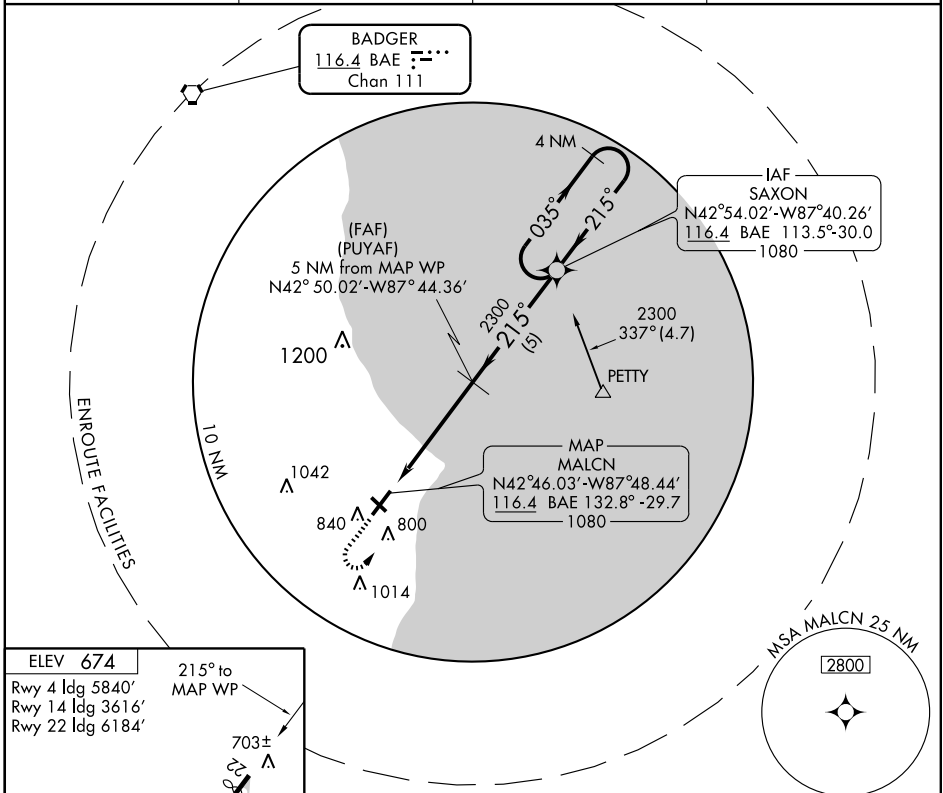
RACINE/JOHN H. BATTEN (RAC)

VORTAC BAE 116.4 Chan 111	APP CRS 215°	Rwy Idg TDZE Apt Elev	6184 666 674
----------------------------------------	------------------------	-----------------------------	-----------------------------------------

NA

MISSED APPROACH: Climb to 2300 then left turn direct SAXON WP and hold.

ASOS 117.7	MILWAUKEE APP CON 120.15(SOUTH) 317.725	CLNC DEL 120.15	UNICOM 123.075 (CTAF)
----------------------	---------------------------------------------------	---------------------------	---------------------------------



CATEGORY	A	B	C	D
S-22	1100-1	434 (500-1)	1100-1¼ 434 (500-1¼)	1100-1½ 434 (500-1½)
CIRCLING	1160-1	486 (500-1)	1160-1½ 486 (500-1½)	1240-2 566 (600-2)

RACINE, WISCONSIN
Amdt 3A 08269

42°46'N - 87°49'W

VOR/DME RNAV or GPS RWY 22

EC-3, 22 OCT 2009 to 19 NOV 2009

EC-3, 22 OCT 2009 to 19 NOV 2009