

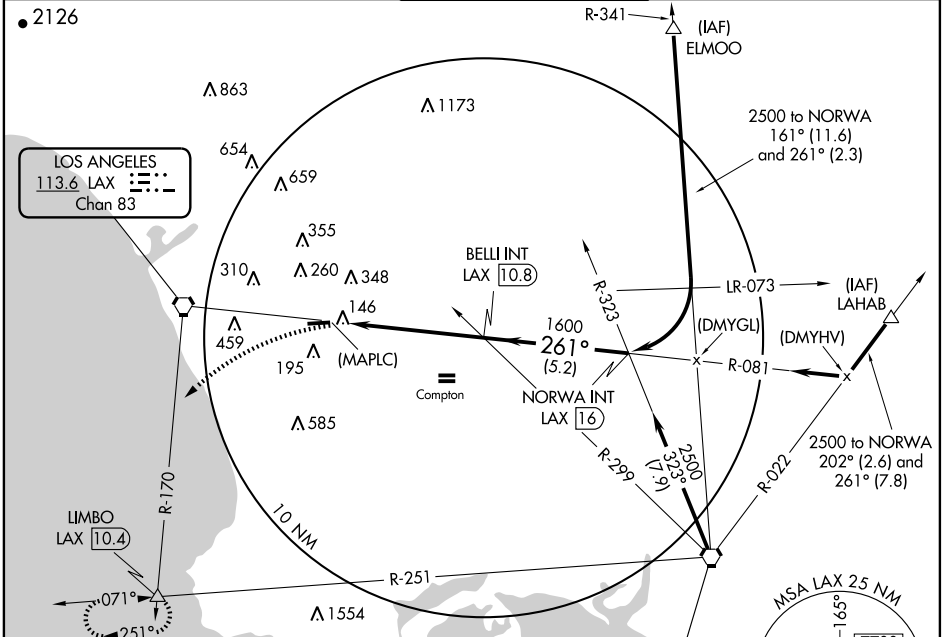
VOR or GPS RWY 25

VORTAC LAX 113.6 Chan 83	APP CRS 261°	Rwy ldg 4493 TDZE 63 Apt Elev 66
---------------------------------------	------------------------	---

HAWTHORNE/JACK NORTHROP FIELD/HAWTHORNE MUNI (HHR)

<p>Visibility reduction by helicopters NA. Inoperative table does not apply. Circling not authorized north of Rwy 7-25. Circling not authorized when control tower closed.</p>	<p>ODALS</p>	<p>MISSED APPROACH: Climbing left turn to 3000 via heading 210° and LAX R-170 to LIMBO Int and hold.</p>
--	--------------	--

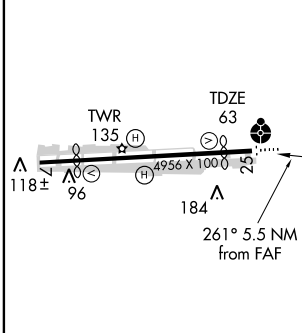
<p>ATIS 118.4</p>	<p>SOCAL APP CON 124.9 269.0</p>	<p>HAWTHORNE TOWER ★ 121.1 (CTAF) 257.8</p>	<p>GND CON 125.1</p>
------------------------------	---	--	---------------------------------



SW-3, 22 OCT 2009 to 19 NOV 2009

SW-3, 22 OCT 2009 to 19 NOV 2009

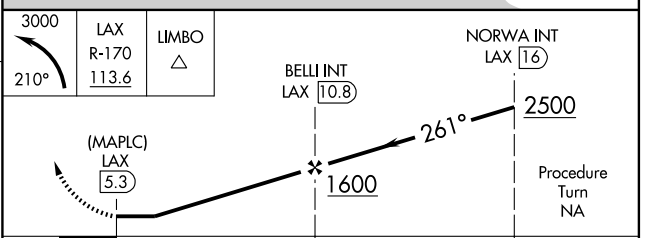
ELEV 66	Rwy 7 ldg 3985'
	Rwy 25 ldg 4493'



REIL Rwy 25
MIRL Rwy 7-25

FAF to MAP 5.5 NM

Knots	60	90	120	150	180
Min:Sec	5:30	3:40	2:45	2:12	1:50



CATEGORY	A	B	C	D
S-25	680-1 617 (700-1)		680-1 ³ / ₄ 617 (700-1 ³ / ₄)	680-2 617 (700-2)
CIRCLING	680-1 614 (700-1)		680-1 ³ / ₄ 614 (700-1 ³ / ₄)	680-2 614 (700-2)

VOR or GPS RWY 25