

THREE RIVERS, MICHIGAN

AL-5119 (FAA)

# NDB RWY 27

THREE RIVERS MUNI DR. HAINES (HAI)

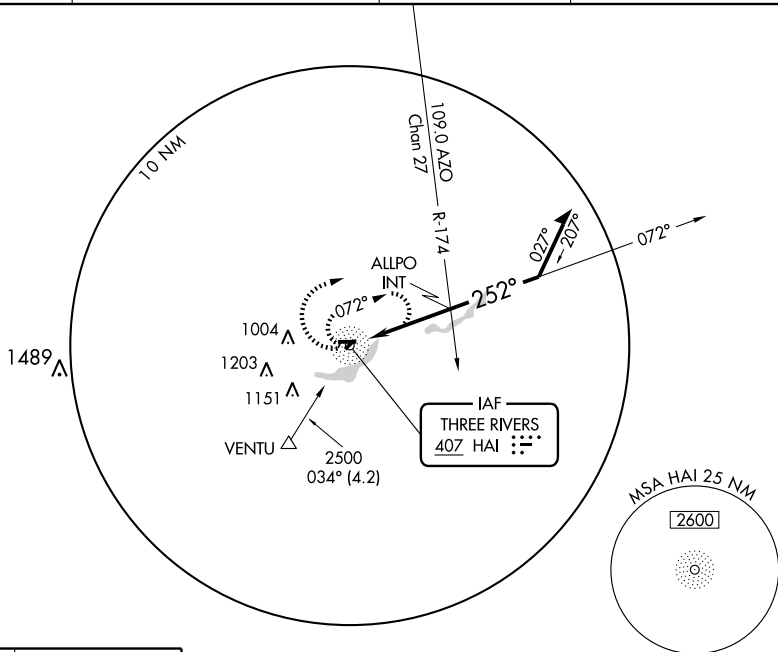
NDB HAI <b>407</b>	APP CRS <b>252°</b>	Rwy Ldg <b>4000</b>
		TDZE <b>823</b>
		Apt Elev <b>824</b>



Use Kalamazoo altimeter setting; when not received, use South Bend altimeter setting and increase all MDAs 100 feet and all visibilities 1/2 mile.

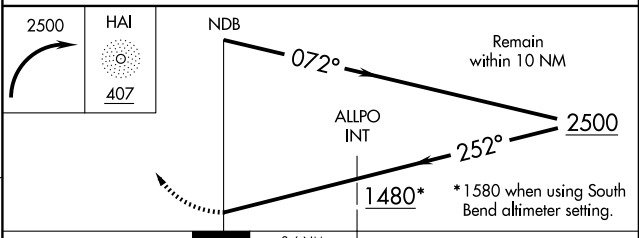
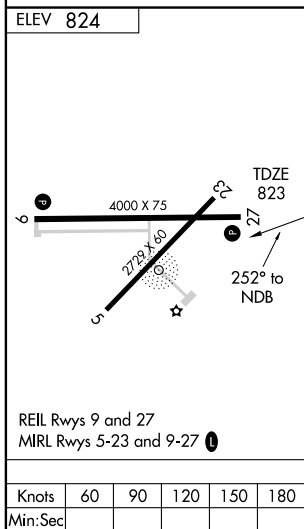
MISSED APPROACH: Climbing right turn to 2500 in HAI NDB holding pattern.

AWOS-3 <b>119.975</b>	KALAMAZOO APP CON ★ <b>121.2 340.9</b>	GCO <b>121.725</b>	UNICOM <b>122.8</b> (CTAF) <b>0</b>
--------------------------	---	-----------------------	--



EC-1, 22 OCT 2009 to 19 NOV 2009

EC-1, 22 OCT 2009 to 19 NOV 2009



CATEGORY	A	B	C	D
S-27	1480-1	657 (700-1)	1480-1 <sup>3</sup> / <sub>4</sub> 657 (700-1 <sup>3</sup> / <sub>4</sub> )	NA
CIRCLING	1480-1	656 (700-1)	1480-1 <sup>3</sup> / <sub>4</sub> 656 (700-1 <sup>3</sup> / <sub>4</sub> )	NA
ALLPO FIX MINIMUMS				
S-27	1380-1	557 (600-1)	1380-1 <sup>1</sup> / <sub>2</sub> 557 (600-1 <sup>1</sup> / <sub>2</sub> )	NA
CIRCLING	1380-1	556 (600-1)	1420-1 <sup>1</sup> / <sub>2</sub> 596 (600-1 <sup>1</sup> / <sub>2</sub> )	NA

THREE RIVERS, MICHIGAN  
Amdt 7A 06047

41°58'N - 85°36'W

THREE RIVERS MUNI DR. HAINES (HAI)  
**NDB RWY 27**