

RNAV (GPS) RWY 3

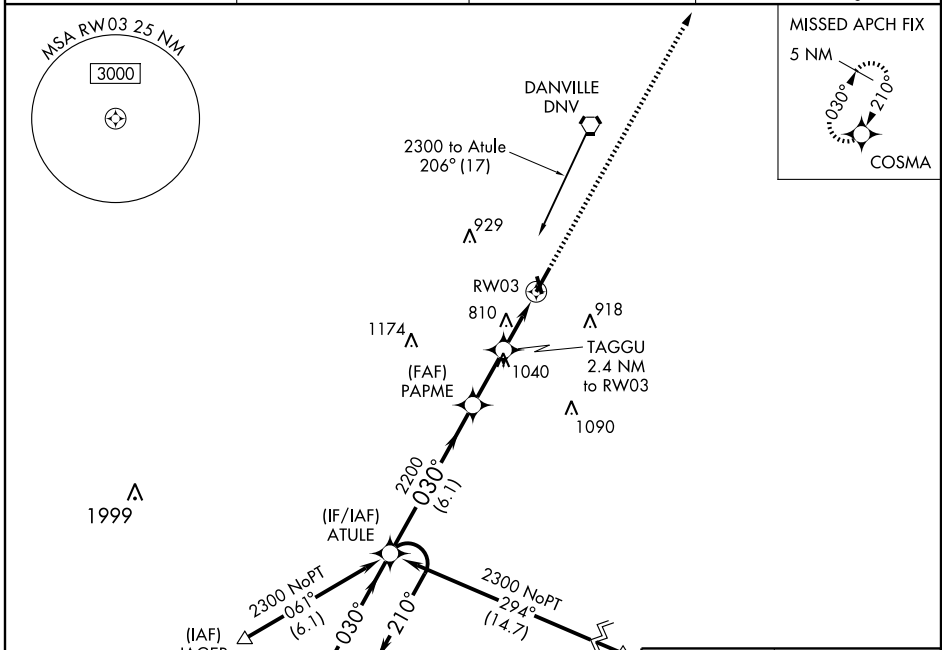
DANVILLE/VERMILION RGNL (DNV)

APP CRS	Rwy Idg	6002
030°	TDZE	674
	Apt Elev	697

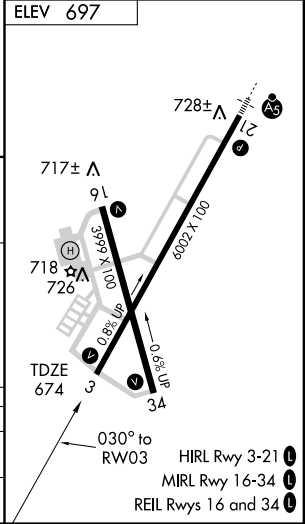
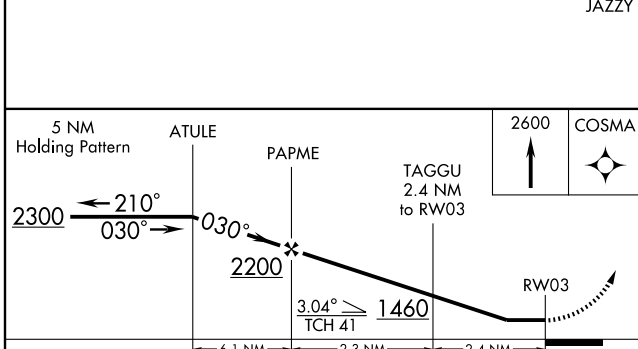
▼ If local altimeter setting not received, use University of Illinois-Willard altimeter setting and increase all MDAs 100 feet. Visibility reduction by helicopters NA. DME/DME RNP-0.3 NA.

MISSED APPROACH: Climb to 2600 direct COSMA and hold.

AWOS-3 119.275	CHAMPAIGN APP CON * 121.35 291.0	CLNC DEL 121.7	UNICOM 122.7 (CTAF) 0
--------------------------	--------------------------------------------	--------------------------	---------------------------------



ELEV 697



CATEGORY	A	B	C	D
RNAV MDA	1120-1	446 (500-1)	1120-1½ 446 (500-1¼)	1120-1½ 446 (500-1½)
CIRCLING	1120-1 423 (500-1)	1160-1 463 (500-1)	1160-1½ 463 (500-1½)	1260-2 563 (600-2)

EC-3, 22 OCT 2009 to 19 NOV 2009

EC-3, 22 OCT 2009 to 19 NOV 2009